



SKYLINE, SL1

£1,150 pcm

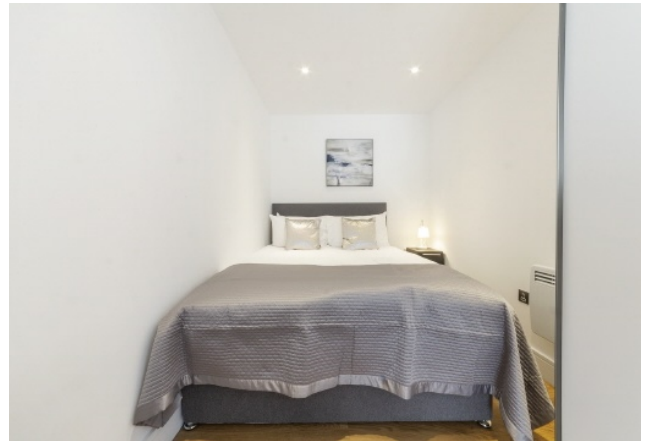
Experience modern living in this fully furnished 6th-floor studio at Skyline Apartments. Flooded with natural light, the open-plan layout boasts premium Galliard finishes, fantastic views, and a video entry system.

- Modern Studio
- 6th Floor
- Lift Access
- Secure Video Entry
- Elizabeth Line
- EPC Rating D

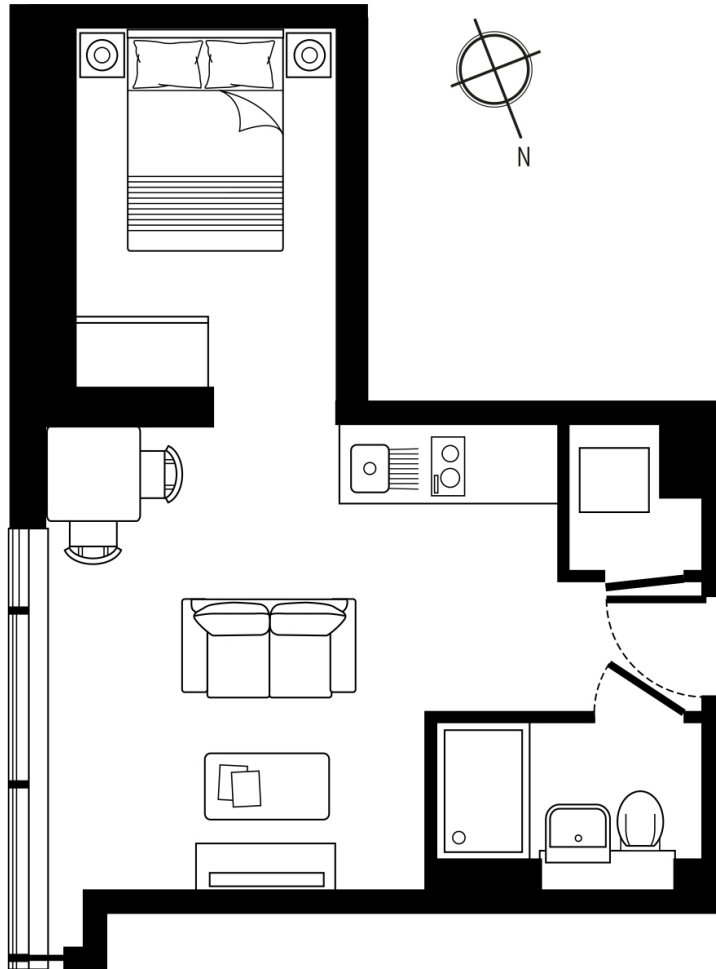


ABOUT THE HOME

Situated in the vibrant heart of Slough Central, residents enjoy immediate access to diverse local amenities. Commuting is effortless, with Slough Central Station located just a convenient 0.4 miles away.







| | | |
|--------------------|-----------------|-------------------|
| LIVING AREA | 4.4 x 4.0 m | 14'4" x 13'0" |
| BEDROOM AREA | 2.2 x 3.1 m | 7'2" x 10'2" |
| TOTAL AREA: | 30 SQ.M. | 322 SQ.FT. |

LiFE RESIDENTIAL

203 Trentham Court, Victoria
Road, London, W3 6BT
Sales: 020 3668 1112
Lettings: 020 3668 1111

Energy Rating: D. We aim to make our particulars both accurate and reliable. However they are not guaranteed; nor do they form part of an offer or contract. If you require clarification on any points then please contact us, especially if you're traveling some distance to view. Please note that appliances and heating systems have not been tested and therefore no warranties can be given as to their good working order.