



**Guide Price**  
**£550,000**

**Freehold**

4x  3x  1x 

**Chaffinch Way, Paddock  
Wood, Tonbridge, Kent,  
TN12**

**OVER 60?**

Secure this property  
for up to **59% less!**

*Wards*  
Helping you move forwards



## Main features

- Large family home with corner plot
- Located a short walk to London bound train station
- Situated close to all local amenities and primary & secondary schools
- Recently renovated kitchen
- Large drive and single garage

## Accommodation

### GROUND FLOOR

- Entrance Hall
- Kitchen: 14'7 x 9'2 (4.45m x 2.80m)
- Dining Room: 13'0 x 9'4 (3.97m x 2.85m)
- Lounge: 16'11 x 11'3 (5.16m x 3.43m)
- Cloakroom

### FIRST FLOOR

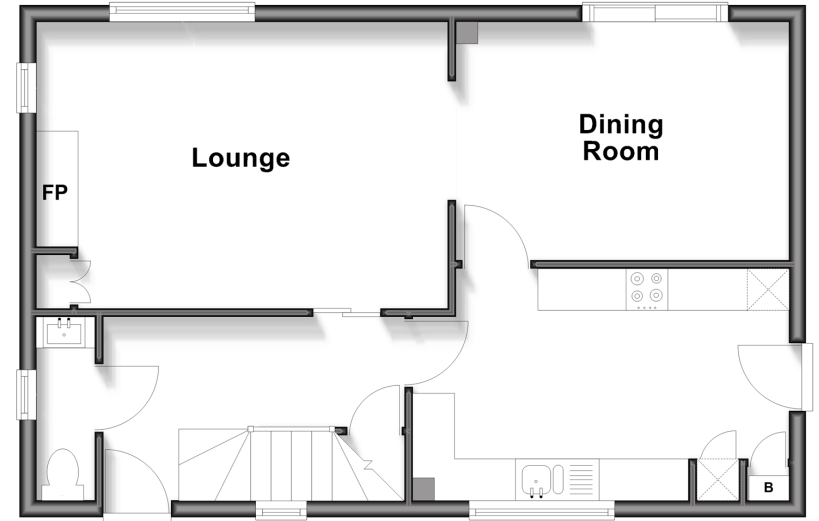
- Landing
- Bedroom 1: 12'2 x 9'4 (3.71m x 2.85m)
- En suite Bedroom 1: 6'7 x 4'5 (2.01m x 1.35m)
- Bedroom 2: 12'2 x 9'5 (3.71m x 2.87m)
- Bedroom 3: 9'2 x 8'0 (2.80m x 2.44m)
- Bedroom 4: 9'4 x 5'6 (2.85m x 1.68m)
- Bathroom: 6'5 x 6'1 (1.96m x 1.86m)

### OUTSIDE

- Garage & Off Road Parking: 17'5 x 9'0 (5.31m x 2.75m)
- Front & Rear Garden

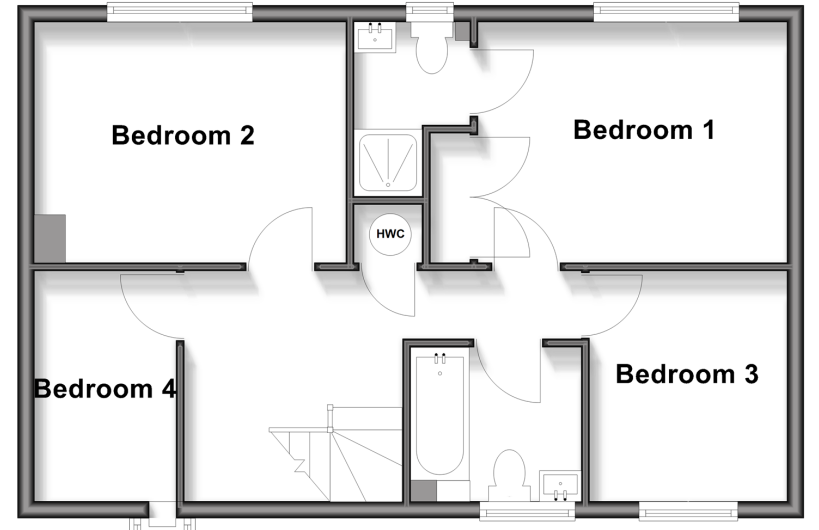
## Ground Floor

Approx. 51.6 sq. metres (555.6 sq. feet)



## First Floor

Approx. 51.7 sq. metres (556.1 sq. feet)



Call Paddock Wood - 01892 836877 ■ [wardsofkent.co.uk](http://wardsofkent.co.uk)

■ Through a Homewise Home For Life Plan people aged 60+ can secure this property for up to 59% less, by purchasing a Lifetime Lease



13627554/20260320/EN/WA