



Rotherhithe Street, SE16

£4,250 Per calendar month

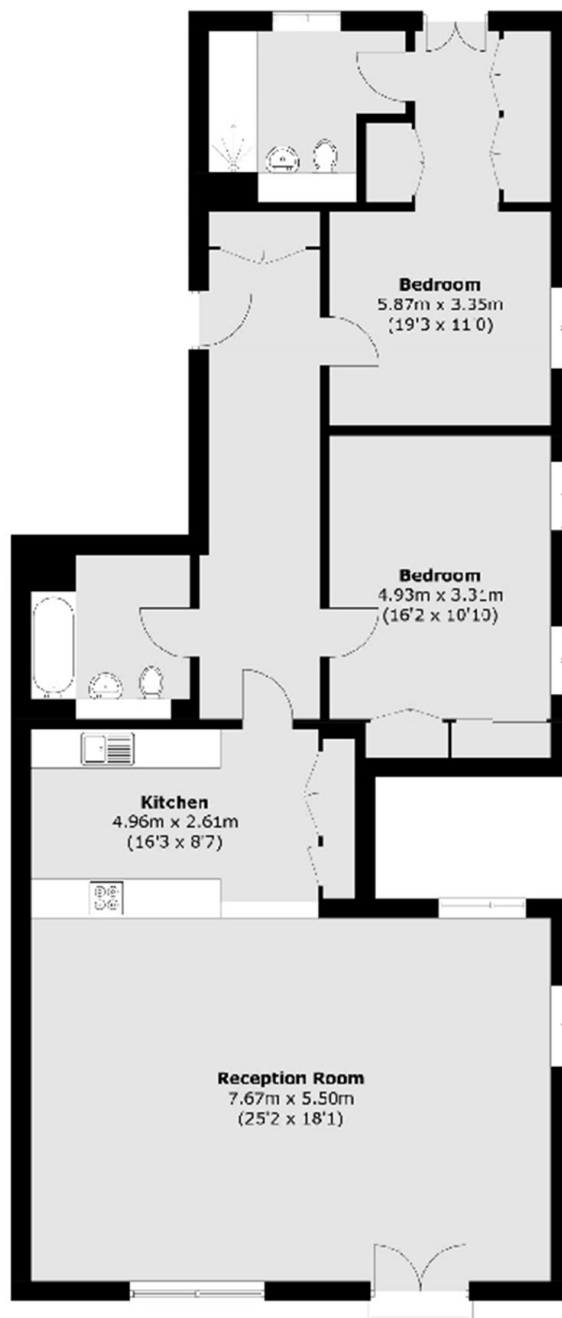
Situated in a Grade II listed warehouse conversion on Rotherhithe Street, this penthouse apartment has two double bedrooms, two bathrooms, and incredible views of The City and Tower Bridge over the River Thames. The property spans over 1,300 square feet and has generous built in storage, beautiful exposed wooden beams and a modern kitchen and bathrooms.

Bombay Wharf is set on the riverside of Rotherhithe Street giving occupants views of Tower Bridge, The City and the River Thames. The property is a four minute walk to Rotherhithe Station for the Windrush Line and ten minutes from Canada Water Station for the Jubilee Line. There are local amenities close by in Canada Water and the popular Mayflower Pub is a short walk down the street.

Features

- Two Bedrooms
- Two Bathrooms
- Penthouse Apartment
- Grade II Listed Conversion
- River Views
- Over 1,300 square feet

Rotherhithe Street, London, SE16



Total area (approx.): 123.4 sq. m (1328.3 sq. ft)