



**Connells**

Cherry Garden Lane  
Bitton Bristol



### Property Description

Bitton is a picturesque village nestled between Bath and Bristol, offering the perfect balance of rural charm and modern convenience. Surrounded by beautiful countryside and steeped in history, Bitton provides a peaceful setting while maintaining excellent transport links.

With easy access to both Bath and Bristol—just a short drive or bus ride away—it's ideal for commuters and families who want village living without sacrificing city amenities. The area boasts local shops, welcoming pubs, and scenic walks along the River Avon and the Bristol-Bath Railway Path, making it a wonderful place to call home.

Bitton is a picturesque village nestled between Bath and Bristol, offering the perfect balance of rural charm and modern convenience. Surrounded by beautiful countryside and steeped in history, Bitton provides a peaceful setting while maintaining excellent transport links.

With easy access to both Bath and Bristol—just a short drive or bus ride away—it's ideal for commuters and families who want village living without sacrificing city amenities. The area boasts local shops, welcoming pubs, and scenic walks along the River Avon and the Bristol-Bath Railway Path, making it a wonderful place to call home.

Bitton is a picturesque village nestled between Bath and Bristol, offering the perfect balance of rural charm and modern convenience. Surrounded by beautiful countryside and steeped in history, Bitton provides a peaceful setting while maintaining excellent transport links.

With easy access to both Bath and Bristol—just a short drive or bus ride away—it's ideal for commuters and families who want village living without sacrificing city amenities. The area boasts local shops, welcoming pubs, and scenic walks along the River Avon and the Bristol-Bath Railway Path, making it a wonderful place to call home.

Bitton is a picturesque village nestled between Bath and Bristol, offering the perfect balance of rural charm and modern convenience. Surrounded by beautiful countryside and steeped in history, Bitton provides a peaceful setting while maintaining excellent transport links.

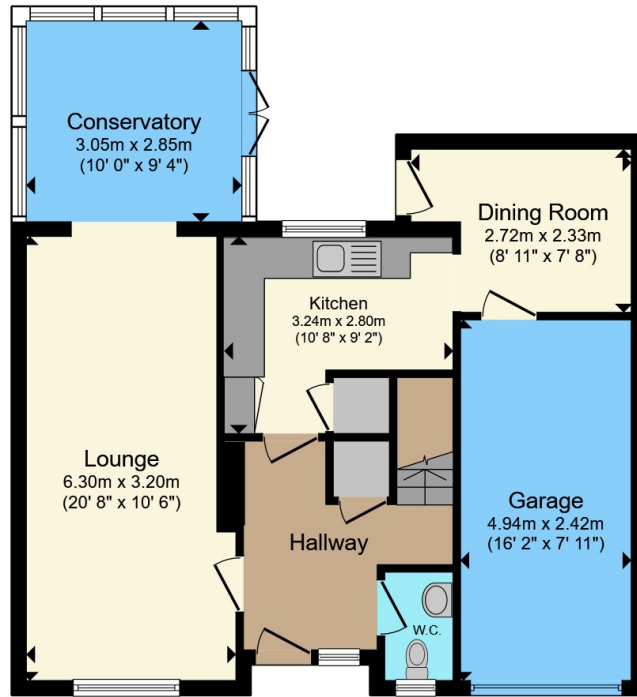
With easy access to both Bath and Bristol—just a short drive or bus ride away—it's ideal for commuters and families who want village living without sacrificing city amenities. The area boasts local shops, welcoming pubs, and scenic walks along the River Avon and the Bristol-Bath Railway Path, making it a wonderful place to call home.



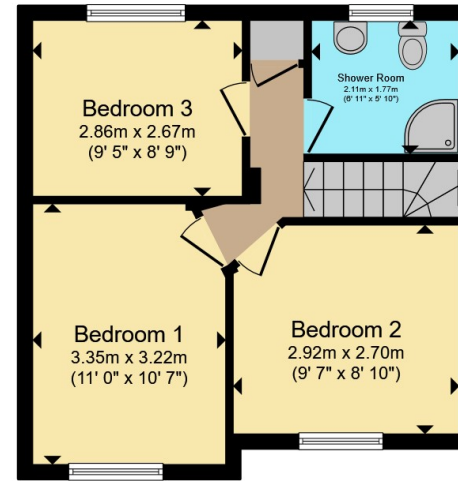








**Ground Floor**



**First Floor**

Total floor area 102.8 m<sup>2</sup> (1,106 sq.ft.) approx

This floor plan is for illustrative purposes only. It is not drawn to scale. Any measurements, floor areas (including any total floor area), openings and orientation are approximate. No details are guaranteed, they cannot be relied upon for any purpose and they do not form part of any agreement. No liability is taken for any error, omission or misstatement. A party must rely upon its own inspection(s). Powered by [www.propertybox.io](http://www.propertybox.io)

**Connells**

To view this property please contact Connells on

**T 0117 932 8684**  
**E [longwellgreen@connells.co.uk](mailto:longwellgreen@connells.co.uk)**

131 Bath Road Longwell Green  
BRISTOL BS30 9DD

EPC Rating: D Council Tax  
Band: D

Tenure: Freehold

**view this property online [connells.co.uk/Property/BLG104512](http://connells.co.uk/Property/BLG104512)**



1. MONEY LAUNDERING REGULATIONS Intending purchasers will be asked to produce identification documentation at a later stage and we would ask for your co-operation in order that there will be no delay in agreeing the sale. 2. These particulars do not constitute part or all of an offer or contract. 3. The measurements indicated are supplied for guidance only and as such must be considered incorrect. Potential buyers are advised to recheck measurements before committing to any expense. 4. We have not tested any apparatus, equipment, fixtures, fittings or services and it is in the buyers interest to check the working condition of any appliances.

Connells Residential is registered in England and Wales under company number 1489613, Registered Office is Cumbria House, 16-20 Hockliffe Street, Leighton Buzzard, Bedfordshire, LU7 1GN. VAT Registration Number is 500 2481 05.

**See all our properties at [www.connells.co.uk](http://www.connells.co.uk) | [www.rightmove.co.uk](http://www.rightmove.co.uk) | [www.zoopla.co.uk](http://www.zoopla.co.uk)**

Property Ref: BLG104512 - 0003