



ZAFER CETINEL POWERED BY **exp** TM UK

@ zafer.cetinel@exp.uk.com

zafercetinel.exp.uk.com

01242 374 844

**31 Mill House Drive,
£300,000**

 3  1  1

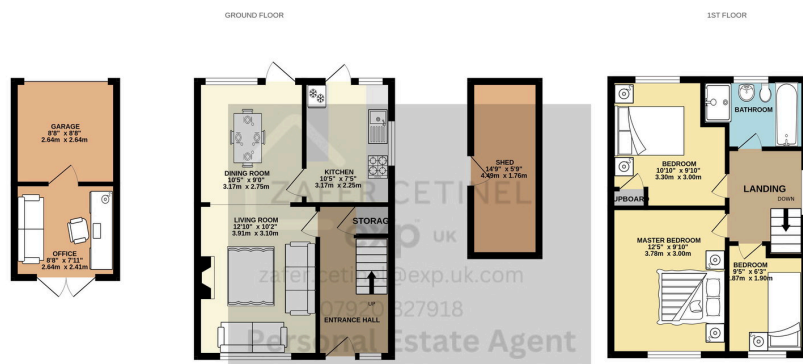


- MILL HOUSE DRIVE, WYMANS BROOK, CHELTENHAM
- CORNER PLOT WITH AN EXTRA BIT OF LAND TO SIDE
- HALF OF THE GARAGE CONVERTED INTO AN OFFICE
- THREE BEDROOM
- DRIVEWAY
- STUNNING SEMI DETACHED HOUSE
- HAD A PLANNING PERMISSION FOR AN EXTENSION ON THE SIDE
- LARGE SHED
- BATHROOM WITH A BATH AND A SHOWER
- REF ZAFER CETINEL

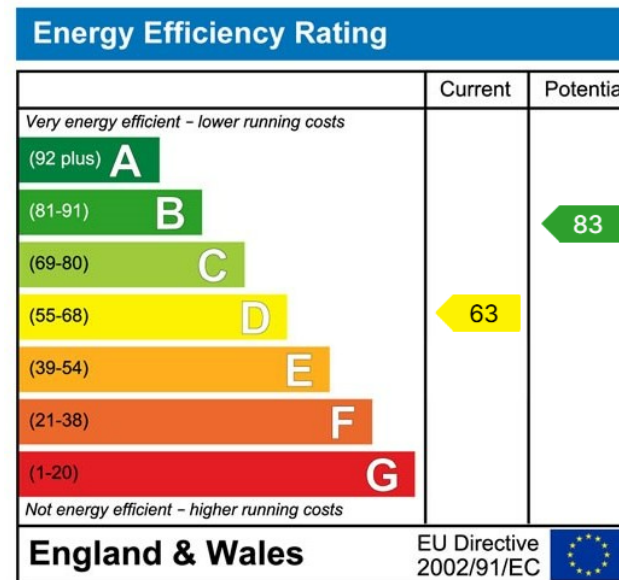


Discover this stunning chalet-style home in the sought-after Wymans Brook area of Cheltenham, located in a peaceful cul-de-sac on Mill House Drive. This beautifully updated property features a spacious entrance hall, an open-plan lounge and dining area flooded with light, and a modern kitchen with integrated appliances. Upstairs, enjoy a bright landing, a bathroom with both a shower and bath, two double bedrooms, and a single bedroom.

The front garden is landscaped with mature shrubs, while the rear offers multiple patios, a lawn, and privacy hedges. A unique office space is created from half of the garage, with additional storage available. Extra amenities include double glazing and gas-fired central heating. A wonderful family home awaiting its next lucky owners!



Whilst every attempt has been made to ensure the accuracy of the footprints contained here, measurements of doors, windows, rooms and any other items are approximate and no responsibility is taken for any error, omission or mis-statement. This plan is for illustrative purposes only and should be used as such for any prospective purchaser. The services, systems and appliances shown have not been tested and not to be guaranteed as to their operability or efficiency can be given. Made with Metreplex C2026



eXp World UK Ltd is a registered company at Level 37, 25 Canada Square, London, E14 5LQ.

Registered company number is 12016573. VAT Registration Number is 327 4120 29