

Lyndale Avenue, London, NW2

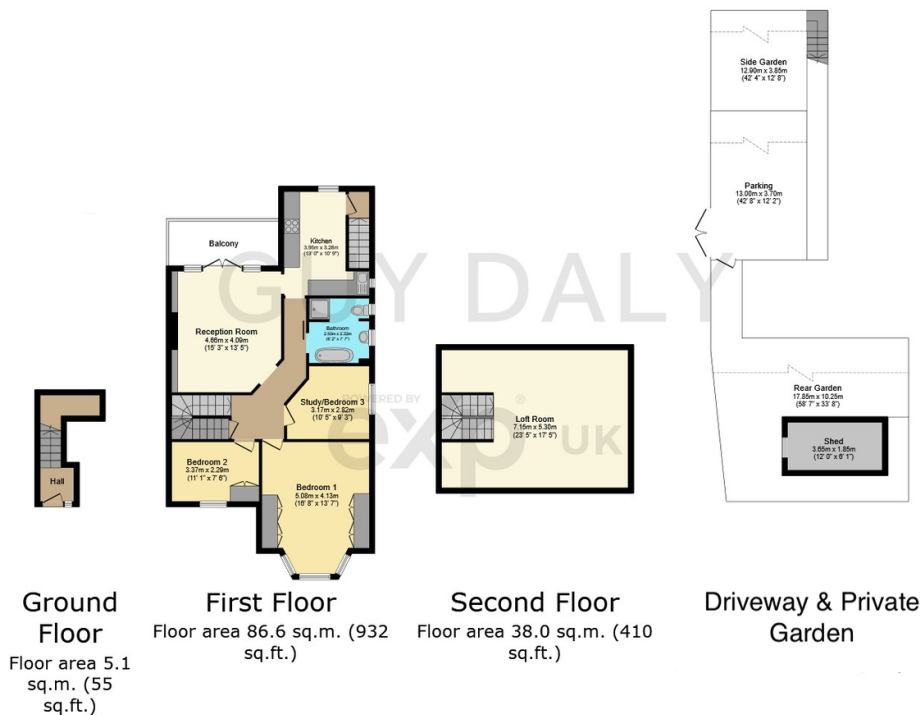
Guide Price £700,000



Think it's impossible to find a flat in NW2 that genuinely ticks every box?
Three proper double bedrooms. Your own garden. A balcony. And parking for two cars?

Key Features

- Three double bedrooms, garden, balcony, loft • Bright southwest-facing living room with French doors opening onto a sunny private balcony
- Spacious bay-windowed main bedroom with his-and-hers wardrobes and leafy outlook • Private 15m southwest-facing garden with space to relax, entertain and enjoy the sun
- Generous loft room with stairs for access and already boarded, with clear potential for a fourth bedroom (STPP) • Fully equipped separate kitchen with direct access to the driveway & garden
- Chain Free & Offered with a Share of Freehold • Guide Price: £700,000 - £725,000
- Hampstead Heath, Golders Hill and Childs Hill Park all within easy walking distance • Excellent transport links and schools nearby, plus standout local restaurants and cafés



Total floor area: 129.8 sq.m. (1,397 sq.ft.)

This floor plan is for illustrative purposes only. It is not drawn to scale. Any measurements, floor areas (including any total floor area), openings and orientations are approximate. No details are guaranteed, they cannot be relied upon for any purpose and do not form any part of any agreement. No liability is taken for any error, omission or misstatement. A party must rely upon its own inspection(s). Powered by www.Propertybox.io