

SNELLERS

ESTATE AGENTS



London Road, TW7

£320,000

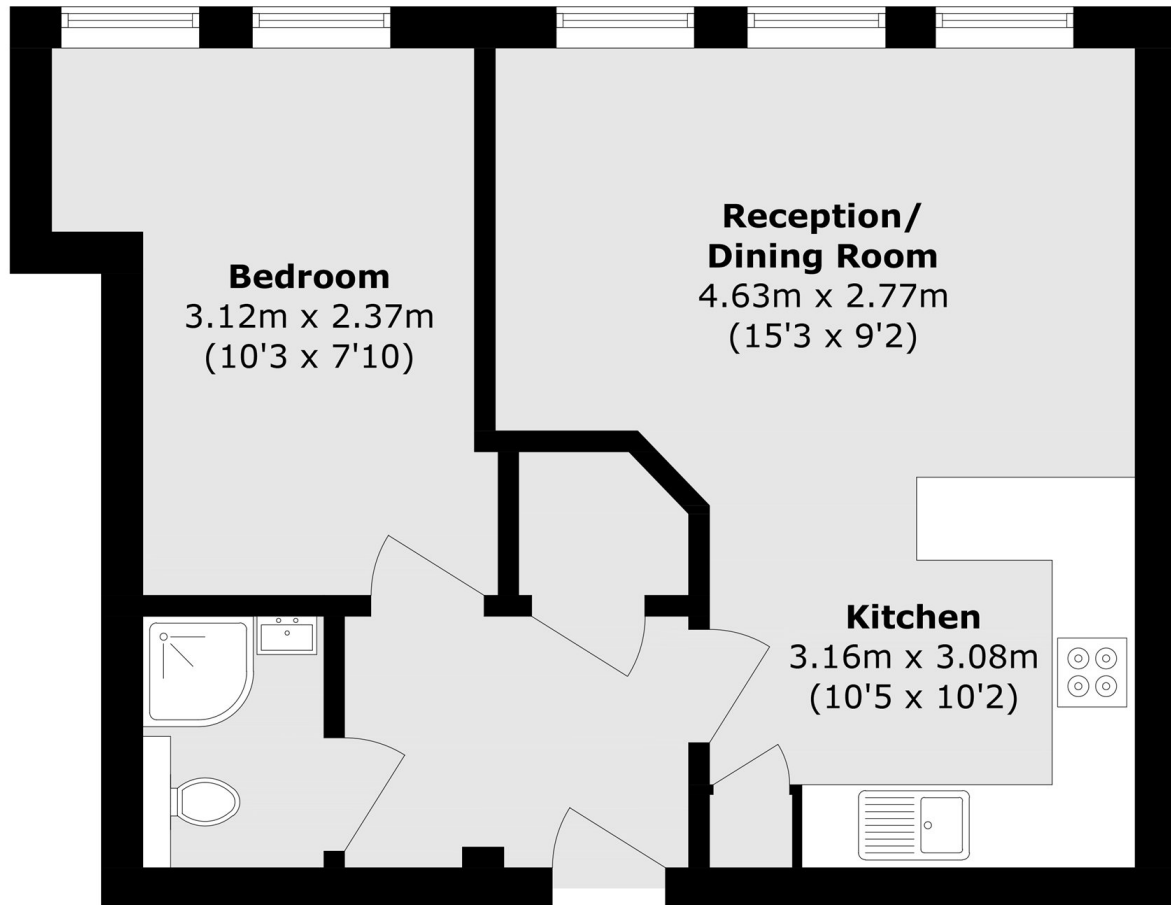
This well-presented one bedroom apartment offers bright and practical accommodation, ideal for first-time buyers, downsizers or investors. The property is well maintained throughout, with a comfortable layout that makes the most of the available space and natural light.

John Busch House is conveniently located in Isleworth, close to local shops, cafés and everyday amenities. Isleworth station is within easy reach, offering direct services into London Waterloo, making it a well-connected and practical location.

- One Double Bedroom • Spacious Reception • Bright Interiors •
- Well Presented • Good Location • Ideal First Buy •

SNELLERS

ESTATE AGENTS



Total area (approx.): 43.5 sq. m (468.2 sq. ft)

Snellers St. Margarets Sales
36 Crown Road
St Margarets
TW1 3EH
020 8892 8008
stmargaretssales@snellers.co.uk

Energy Rating: C We aim to make our particulars both accurate and reliable. However they are not guaranteed; nor do they form part of an offer or contract. If you require clarification on any points then please contact us, especially if you're traveling some distance to view. Please note that appliances and heating systems have not been tested and therefore no warranties can be given as to their good working order