

The Colonnade

Maidenhead • • SL6 1DL

: £418,000



coopers
est 1986

The Colonnade

Maidenhead • • SL6 1DL

SOLD OFF MARKET!

This spacious first-floor apartment offers 704 sq. ft. of bright and modern living, featuring a generous open-plan kitchen/living/dining room opening onto a full-width private balcony, two well-proportioned bedrooms (principal with en-suite), and a family bathroom. Waterside Court benefits from secure entry, allocated parking, and well-kept communal areas, while being ideally positioned in the heart of Maidenhead close to shops, cafés, the Elizabeth Line at Maidenhead station, the M4, and scenic Thames riverside walks.

These particulars are intended as a guide and must not be relied upon as statements of fact. Your attention is drawn to the Important Notice on the last page.







Schools:



Train:



Car:

M4, A40, M25, M40



Council Tax Band:

C

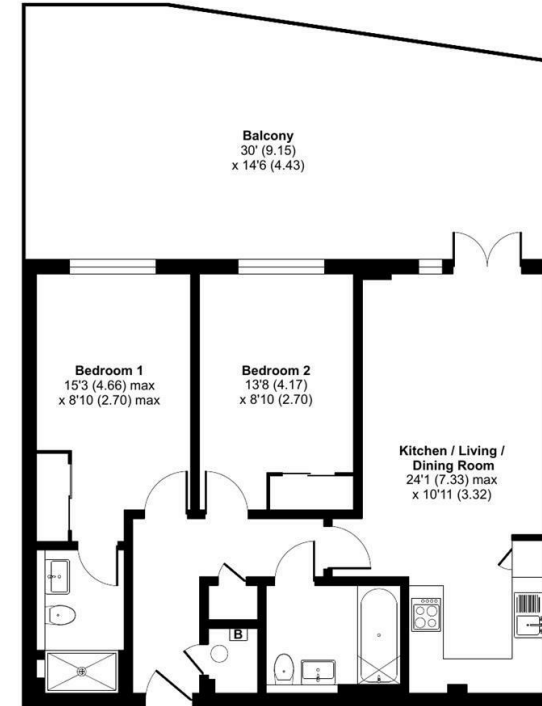
(Distances are straight line measurements from centre of postcode)



Waterside Court, The Colonnade, Maidenhead, SL6

Approximate Area = 704 sq ft / 65.4 sq m

For identification only - Not to scale



FIRST FLOOR



Floor plan produced in accordance with RICS Property Measurement 2nd Edition, incorporating International Property Measurement Standards (IPMS2 Residential). © richcom 2025. Produced for Coopers. REF: 1354608

coopers
est 1986

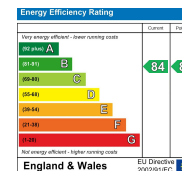
coopers
est 1986

01628 232 550

42 Queen Street, Maidenhead,
, SL6 1HZ

maidenhead@coopersresidential.co.uk

CoopersResidential.co.uk



Important Notice: These particulars, whilst believed to be accurate are set out as a general outline only for guidance and do not constitute any part of an offer or contract. Intending purchasers should not rely on them as statements or representation of fact, but must satisfy themselves by inspection or otherwise has the authority to make or give any representation or warranty in respect of the property.