

## 26, Riverside Country Lodges, Boat Lane – NG14 7FT

Guide Price £170,000





## 26, Riverside Country Lodges

Boat Lane, Nottingham

Luxury riverside lodge in Bleasby with open countryside and the River Trent on the doorstep! Stunning open-plan living, 2 double beds and parking. An ideal retreat offering single-level accommodation!

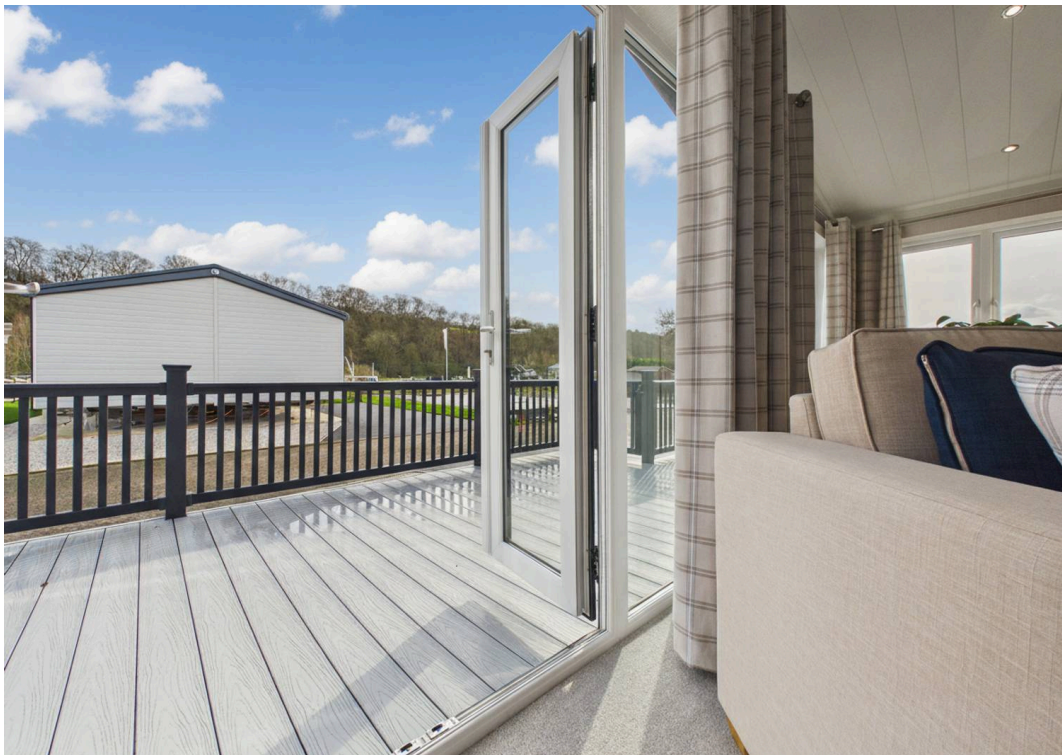
Council Tax band: A

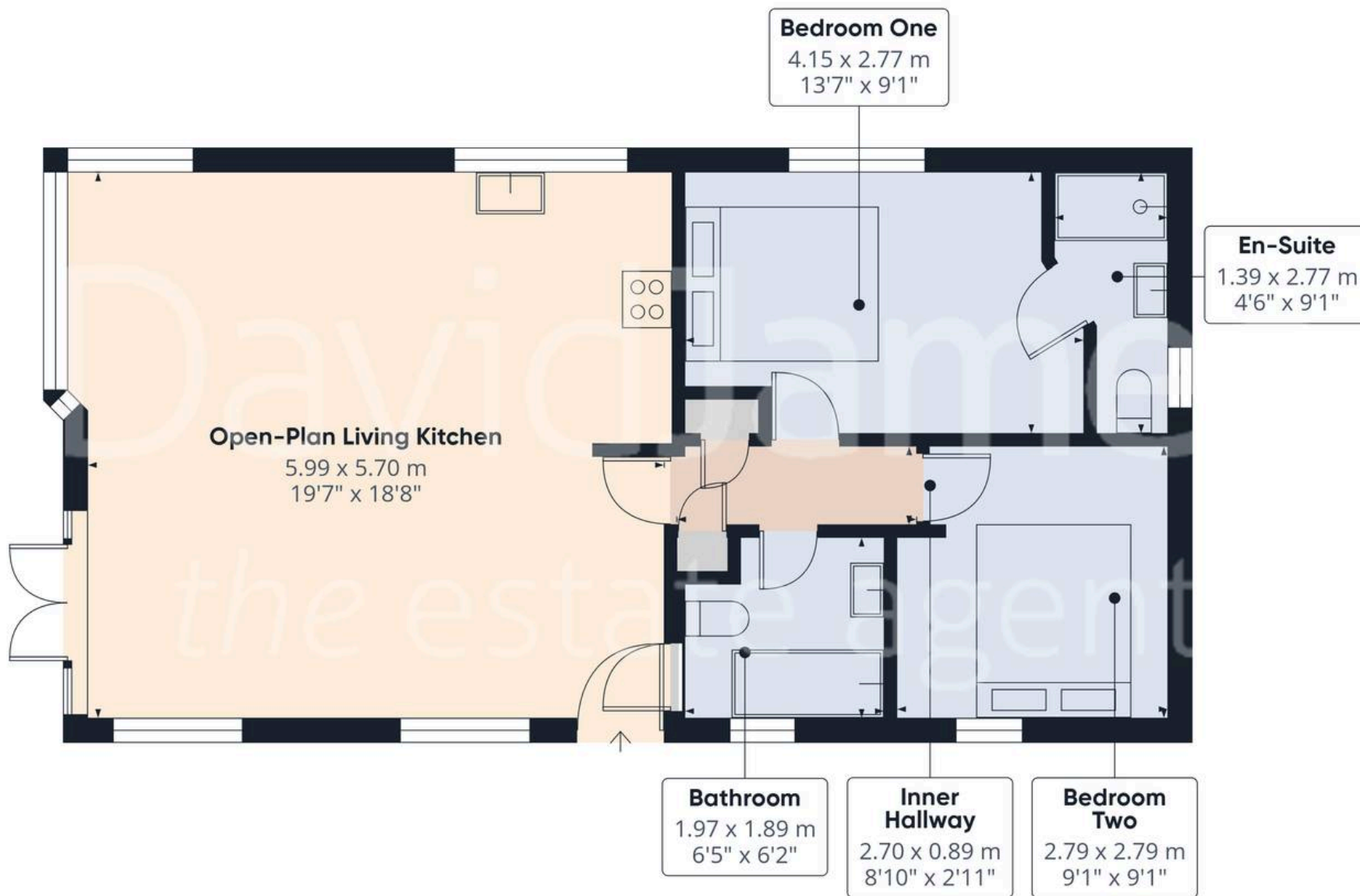
Tenure: Non-Traditional Tenure

- Luxury park home lodge set in a tranquil riverside location
- Stunning location surrounded by fields, woodland and marina views
- Ideally placed in Bleasby with the River Trent and countryside walks nearby
- Well-suited to professionals, couples or downsizers seeking versatile single-level living
- Contemporary open-plan lounge, dining and kitchen area with vaulted ceilings
- Kitchen area featuring integrated appliances and central breakfast island
- Two double bedrooms with wardrobes, bedroom two currently configured as a twin bedroom
- Modern en-suite shower room and a further family three-piece bathroom
- Superb raised terrace accessed via the living area
- Parking for at least two vehicles with convenient side access









Approximate total area<sup>(1)</sup>

65.1 m<sup>2</sup>  
701 ft<sup>2</sup>

(1) Excluding balconies and terraces

Calculations reference the RICS IPMS 3C standard. Measurements are approximate and not to scale. This floor plan is intended for illustration only.

GIRAFFE360





## David James Estate Agents

376 Carlton Hill, Carlton - NG4 1JA

0115 987 8957 • [carlton@david-james.com](mailto:carlton@david-james.com) • [www.david-james.com](http://www.david-james.com)

These particulars are produced in good faith and are set out as a general guide only. Measurements are approximate and floor plans are for illustrative purposes only. Services have not been tested. We have established professional relationships with third-party suppliers for the provision of services to Clients, details of which can be found on the property listing page on our website.