



Giggs Hill Road

Thames Ditton, KT7 0BT

Guide Price £850,000

Rose Cottage is a beautiful 'chocolate box' grade II listed period cottage situated with uninterrupted views across Giggs Hill Cricket Green. Downstairs features a double reception room with feature fireplace and bespoke fitted bookcases/joinery - this leads to a separate WC/utility room and a delightful shaker kitchen. French doors from here open onto a pretty mature cottage garden, with patio to front, arbour, potting shed and summer house. Upstairs the generous principle bedroom has a wall of fitted wardrobes and striking high ceilings creating a light, bright retreat. On this floor is also a further double room and pristine bathroom. This home has been carefully and lovingly refurbished to an extremely high standard, including new windows, staircase, wood flooring and decorated throughout. Located perfectly for the sought after Thames Ditton schools, high street shops, train station (direct into London Waterloo) and the monthly farmers market just off the green. Offered to the market with no onward chain.

- Grade II listed period cottage
- Immaculately presented
- Pretty cottage garden
- Overlooking Giggs Hill Cricket Green
- No onward chain
- Recently refurbished to a high standard

Floor Plan

Rose Cottage

Approximate Gross Internal Area = 101.2 sq m / 1089 sq ft

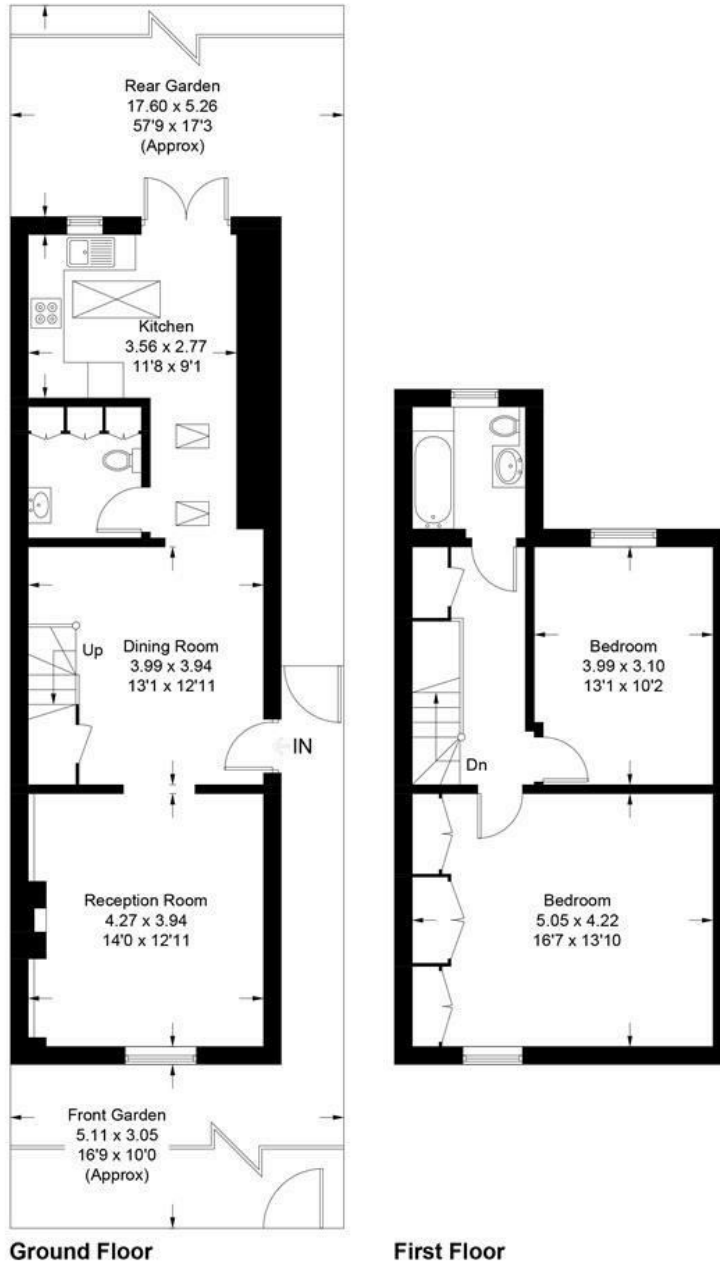
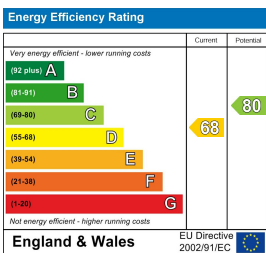


Illustration for identification purposes only, measurements are approximate, not to scale. Fourlabs.co © (ID1262654)

Energy Efficiency Graph



These particulars, whilst believed to be accurate are set out as a general outline only for guidance and do not constitute any part of an offer or contract. Intending purchasers should not rely on them as statements of representation of fact, but must satisfy themselves by inspection or otherwise as to their accuracy. No person in this firm's employment has the authority to make or give any representation or warranty in respect of the property.