

Leather Lane, EC1N

£5,000 Per calendar month

Set within a former gold bullion refinery warehouse, this stunning three bedroom, two bathroom loft style apartment combines industrial character with modern design. The reception room boasts impressive ceilings over four meters high and large industrial style windows, flooding the space with natural light.

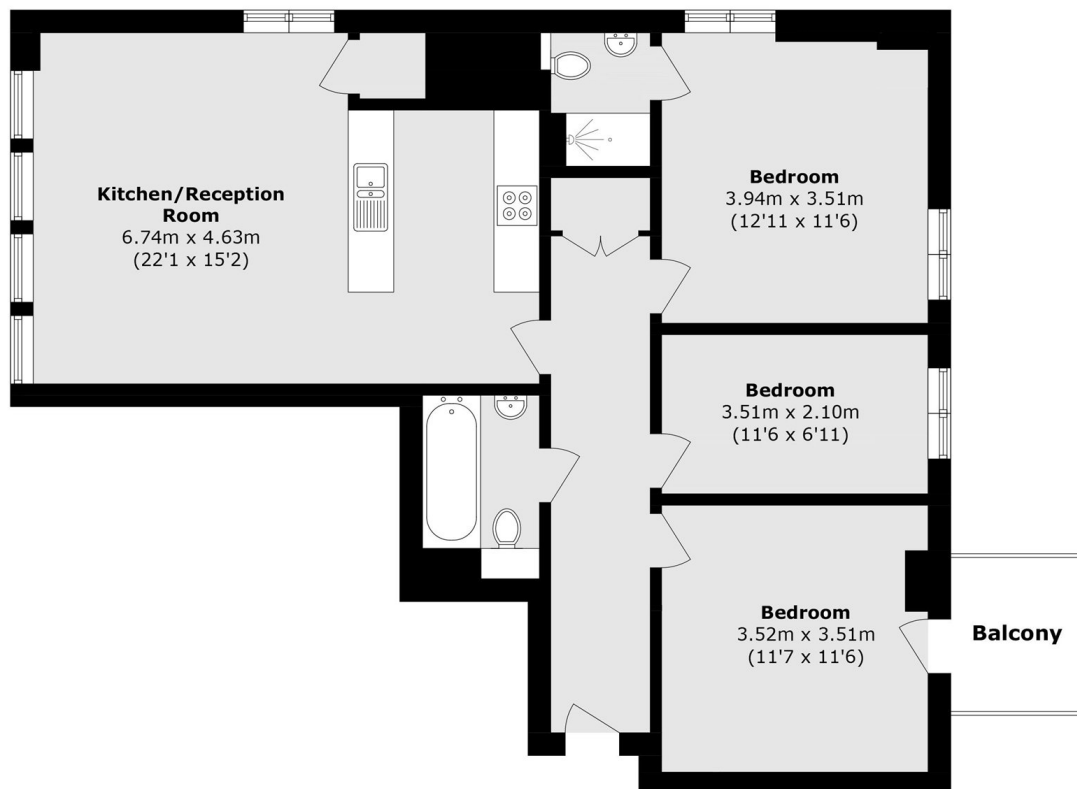
Once part of Hatton Garden's historic jewellery trade, the building now forms part of the unique Sweeps development within the Johnson Building.

Ideally located between Clerkenwell and Farringdon, you're moments from top restaurants, bars and excellent transport links, with the Elizabeth line and Leather Lane Market just around the corner.

Features

- Three Bedrooms
- Two Bathrooms
- Warehouse Conversion
- Wooden Floors Throughout
- High Ceilings
- Private Balcony

Leather Lane, London, EC1N



First Floor

Total area (approx.): 83.6 sq. m (899.8 sq. ft)
Balcony area (approx.): 3.5 sq. m (37.6 sq. ft)