



RE/MAX
Property Centre

OAKLEY GARDENS

OAKLEY ROAD,
LITTLE OAKLEY



07972 190376



tendring@remax.uk



A Boutique Collection of Executive Family Homes

Oakley Gardens is an exclusive collection of thoughtfully designed 3, 4 & 5 bedroom detached homes, set within a desirable rural location on Oakley Road, Little Oakley. Combining modern specification with spacious layouts, these homes are perfectly suited for family living, offering both comfort and practicality in a peaceful setting.

With a limited number of properties available, Oakley Gardens presents a rare opportunity to secure a high-quality home in a sought-after countryside location.

Each property at Oakley Gardens has been carefully designed to offer generous internal space, high-quality finishes, and energy-efficient living, with layouts ideal for modern family lifestyles.

Available Homes:

Plot 6 – £425,000 3 Bedroom Detached House

- Approx. 120 sq. m + 18 sq. m garage
- Show home – ready for immediate occupation
- Fully turfed garden

Plot 7 – £525,000 4 Bedroom Detached House

- Approx. 150 sq. m + 18 sq. m garage
- Choice of LVT flooring and carpets (samples available)

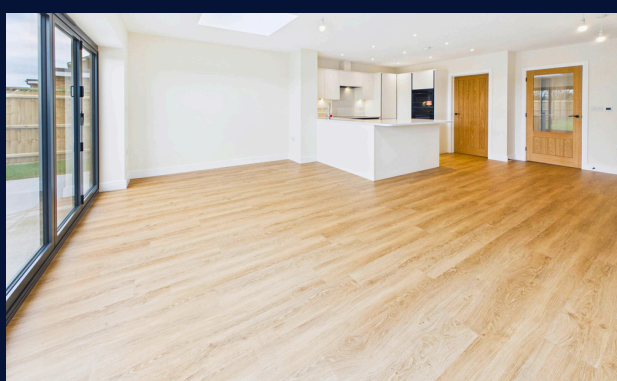
Plot 8 – £695,000 5 Bedroom Detached House

- Approx. 195 sq. m + 37.5 sq. m garage
- Set within an impressive 2-acre plot
- Choice of LVT flooring and carpets (samples available)



Key Features Include:

- Spacious open-plan kitchen, dining and family areas
- Contemporary kitchens with Quartz worktops
- Integrated appliances including fridge/freezer, combi oven, fan oven, dishwasher, boiling water tap and induction hob
- Modern bathrooms and shower rooms
- Fitted wardrobes to selected bedrooms
- Electric vehicle charging points
- Fibre broadband connectivity
- PV solar panels (optional battery storage available)
- Seeded or turfed gardens with porcelain patio areas
- Powered garages with electric doors





Specification:



Designed with both style and functionality in mind, the homes at Oakley Gardens feature a high level of specification throughout.

Kitchens:

- Contemporary fitted kitchens
- Quartz worktops
- Integrated appliances
- Induction hobs
- Boiling water tap

Bathrooms:

- Modern suites with high-quality fittings
- Separate bath and shower facilities (plot dependent)

Flooring:

- Choice of LVT and carpets (Plots 7 & 8)
- Finished flooring throughout Plot 6

External:

- Landscaped gardens (seeded or turfed)
- Porcelain patio areas
- Electric garage doors
- EV charging points



Lifestyle & Location:



Oakley Gardens is ideally positioned to offer the best of both worlds — a **peaceful rural environment** while remaining **well-connected** to nearby towns and local amenities.

Located in the village of Little Oakley on the outskirts of Harwich, the area is known for its countryside surroundings, coastal proximity and strong sense of community. Residents can enjoy nearby open fields, walking routes and easy access to the Essex coastline, providing an ideal setting for family life and outdoor living.

Despite its tranquil setting, the development benefits from convenient access to local amenities including shops, schools and everyday services within Harwich and the surrounding areas. For commuters, Harwich International Station offers direct rail links, while road connections provide access to larger towns such as Colchester, offering a wider range of retail, dining and leisure facilities.

The development is perfectly suited to families and buyers seeking **space, privacy and a higher quality of living**, without compromising on modern conveniences such as high-speed fibre internet, sustainable energy solutions and connectivity to key locations.



Why Oakley Gardens?

Boutique Scale -

A limited number of homes creating a private and exclusive environment, unlike larger housing estates.

Spacious detached properties -

Each home is generously proportioned with layouts designed for modern family living, including open-plan spaces and well-sized bedrooms.

High Specification Throughout & Energy Efficient -

Stylish interiors combined with durable, high-quality finishes suitable for everyday living. Featuring PV solar panels, electric vehicle charging points and modern energy-conscious construction to help reduce running costs.

Generous Plot Sizes -

All homes benefit from good-sized plots, including a standout property set within an impressive 2-acre plot. A perfect balance of space, comfort and practicality, making these homes well suited to growing families or those seeking a higher quality of living.

Peaceful Rural Setting -

Located in a desirable countryside position, offering a quieter lifestyle while remaining connected to nearby towns and amenities.

RE/MAX

Property Centre

For further information, floorplans, or to arrange a private viewing, please contact:

RE/MAX Property Centre

Phone: +44 (0) 7972 190376

Email: mel.clarke@remax.uk

Office Address: 121-123 High Street, Harwich, Essex, CO12 3AP

