



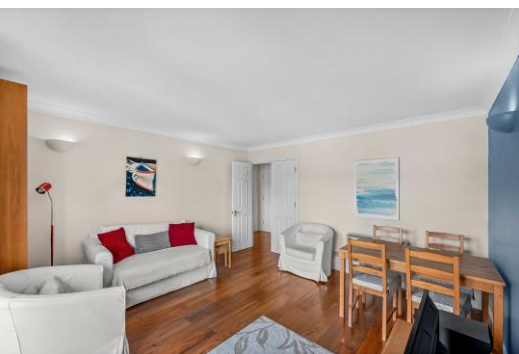
# Rainbow Quay

London, SE16

Asking Price £375,000

Stylish second floor one bedroom dockside apartment with water views, bright reception and Juliet balcony, set within a highly desirable Surrey Quays development close to Canada Water transport links.

**CHESTERTONS**



# Rainbow Quay

London, SE16

- Second floor dockside apartment with views
- Bright reception with Juliet balcony
- Attractive outlook across Greenland Dock
- Separate fully fitted modern kitchen
- Spacious double bedroom with storage
- Contemporary bathroom with clean finish
- Sought-after Rainbow Quay development
- Chain free ideal first-time purchase



A well-presented one bedroom apartment set on the second floor of this sought-after dockside development in Surrey Quays, offering beautifully balanced living space and an attractive outlook across the water. The reception room is particularly impressive, featuring warm wood flooring and full-height doors opening onto a Juliet balcony, allowing natural light to flood the space while framing views over the marina. The layout is well considered, with clearly defined living and dining areas, creating a comfortable and versatile environment ideal for both relaxing and entertaining.

The property further benefits from a separate fitted kitchen with ample storage, a generous double bedroom with built-in wardrobes, and a contemporary bathroom suite. Rainbow Quay is perfectly positioned between Greenland Dock and South Dock Marina, offering a peaceful waterside setting with scenic walks on the doorstep. Canada Water station is within easy reach, providing excellent links via the Jubilee Line and Overground into Canary Wharf, London Bridge and the City. This is an ideal purchase for first-time buyers, investors or professionals seeking a well-located London base combining lifestyle, connectivity and long-term appeal.

**Tenure:** Leasehold 95 years 6 months  
**Service Charge:** £2199  
**Ground Rent:** £232  
**Local Authority:** Southwark  
**Council Tax Band:** D

Score	Energy rating	Current	Potential
92+	A		
81-91	B	82 B	82 B
69-80	C		
55-68	D		
39-54	E		
21-38	F		
1-20	G		

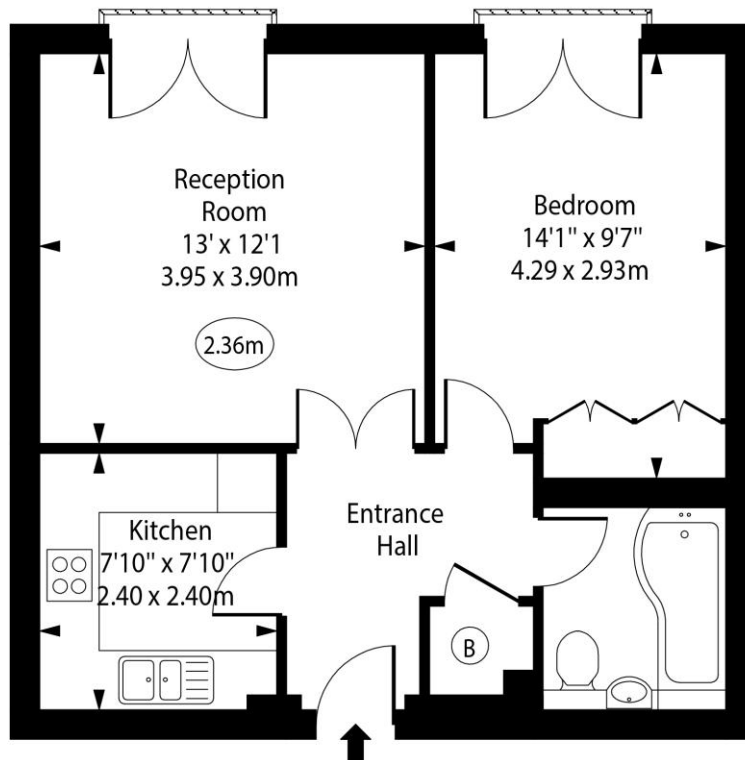
### Chestertons Surrey Quays Sales

2 Plough Way  
 London  
 SE16 2EU

+44 (0)20 7378 0644  
[chestertons.co.uk](http://chestertons.co.uk)

# Rainbow Quay, SE16

○ - Ceiling Height



Second Floor

Approx Gross Internal Area

495 Sq Ft - 45.99 Sq M

Every attempt has been made to ensure the accuracy of the floor plan shown. However, all measurements, fixtures, fittings, and data shown are approximate interpretations and for illustrative purposes only. Measured according to the RICS. Not To Scale.

[www.goldlens.co.uk](http://www.goldlens.co.uk)

Ref. No. 032181D

