



APARTMENTS 7-10

Watery Lane, Shipston-On-Stour, CV36 4RS

**SHELDON
BOSLEY
KNIGHT**

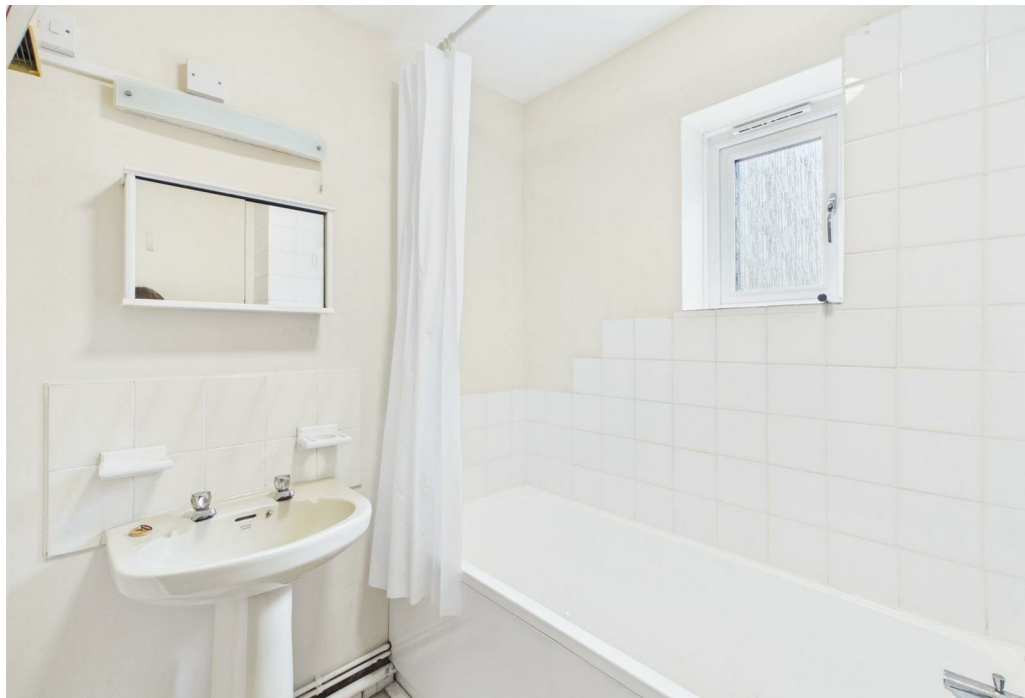
LAND AND
PROPERTY
PROFESSIONALS

Property Description

*** DEPOSIT ALTERNATIVE AVAILABLE

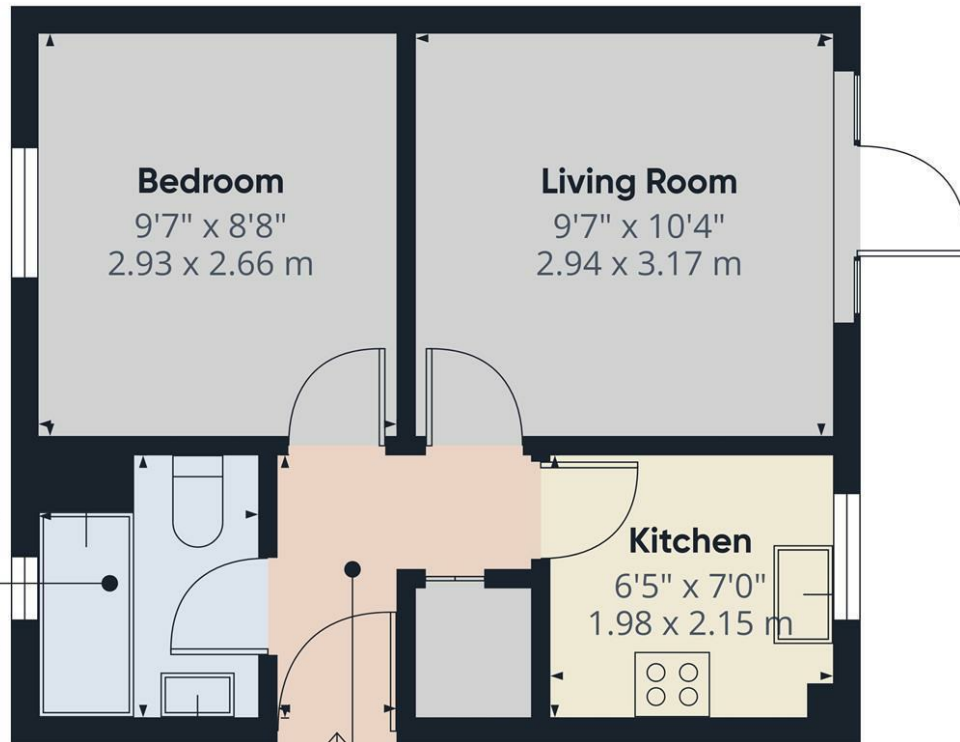
*** One bedroom ground floor apartment with direct access to a shared garden. Within easy walking distance of Shipston's town centre. There is a tidy communal entrance, the flat itself has a hallway with storage. The Kitchen comes with a cooker, fridge/freezer and washing machine, the living room has patio doors leading directly out to the garden which is shared with the neighbouring property. The garden includes a small lawn, patio area and rotary washing line. The bedroom is a double and the bathroom contains a bath with overhead shower. This apartment is offered unfurnished. There is residents and visitor parking to the fore within the car park. Council Tax Band B. Energy Rating D. Available Now!





Key Features

- *** DEPOSIT ALTERNATIVE AVAILABLE ***
- Shipston on Stour
- One Bedroom
- Ground floor apartment
- Unfurnished
- Direct access to shared garden
- Residents car park
- Council Tax Band B
- Energy Rating D
- Available Now!



Bathroom
6'5" x 5'5"
1.97 x 1.65 m

Hallway
6'6" x 2'11"
1.98 x 0.90 m

Living Room
9'7" x 10'4"
2.94 x 3.17 m

Kitchen
6'5" x 7'0"
1.98 x 2.15 m

Bedroom
9'7" x 8'8"
2.93 x 2.66 m

Approximate total area⁽¹⁾
301 ft²
28 m²

(1) Excluding balconies and terraces

Calculations reference the RICS IPMS 3C standard. Measurements are approximate and not to scale. This floor plan is intended for illustration only.

GIRAFFE360



£700 PCM