



Lodge Lane, N12

£2,000 Per calendar month

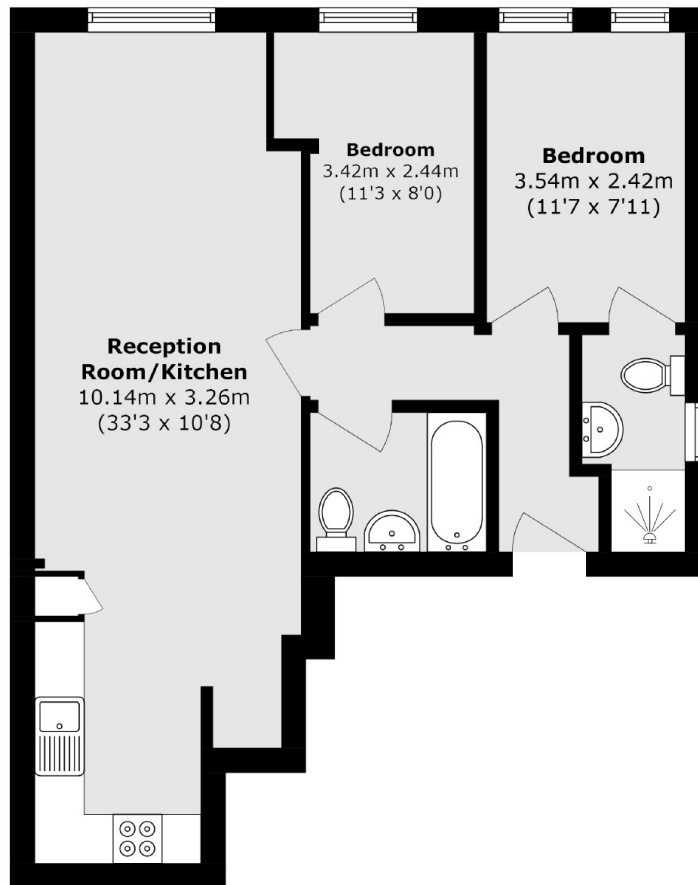
This spacious first floor apartment features two double bedrooms and two bathrooms, providing ample living space. It boasts an open-plan living area with a large kitchen diner, creating a bright and airy atmosphere. The property is available immediately, offered furnished or part-furnished, and benefits from a secure entrance.

Situated in the heart of North Finchley, this apartment is just a short walk from the vibrant High Road, offering access to various shops, cafes, and amenities. The location also provides excellent transport links, ensuring easy connectivity to surrounding areas. Additionally, residents can enjoy a small communal outdoor space at the rear of the property.

Features

- Two Bedrooms
- One Reception
- Two Bathrooms
- First Floor
- Secure Entrance
- Modern

Lodge Lane, London, N12



Total area (approx.): 60.5 sq. m (651.2 sq. ft)