

INTRODUCING

Garston Lane, Watford WD25 9QP

3 Bedroom House - Semi-Detached for sale

£575,000

Price



3 Bedrooms/1 Bathrooms EPC Rating: C

- Well Presented Semi-Detached Family Home
- Lounge With Bay To Front
- 3 Bedrooms
- Loft Room (No Building Regs)
- Attractive Rear Garden
- Re-fitted Kitchen/Diner With Bi-Fold Doors To Garden
- Entrance Hall
- Re-fitted Bathroom
- Council Tax Band D
- Driveway To Front

HARRY CHARLES

Property Specialists

Call us
01923 731313

** WELL PRESENTED AND GREATLY IMPROVED THREE BEDROOM SEMI-DETACHED FAMILY HOME - RE-FITTED KITCHEN/DINER - LOUNGE TO FRONT - THREE BEDROOMS - RE-FITTED BATHROOM - LOFT ROOM - DRIVEWAY TO FRONT - ATTRACTIVE REAR GARDEN - COUNCIL TAX BAND D - CLOSE TO GARSTON STATION

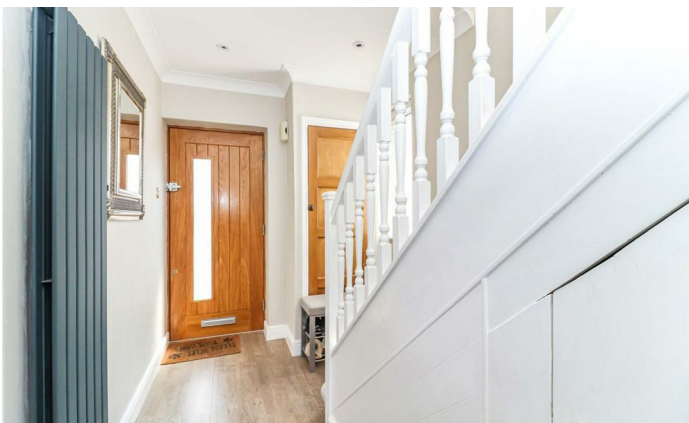
** We are delighted to offer for sale this greatly improved three bedroom semi-detached family home situated in this popular Garston location. The property benefits from a re-fitted kitchen/diner, lounge and entrance hall to the ground floor with three bedrooms and a re-fitted bathroom to the first floor. The property also benefits from a loft room (without building regulations for this). Externally there is an attractive garden to the rear and a driveway to the front providing off road parking. In order to avoid disappointment, please contact us without further delay to arrange an early appointment to view.



HARRY CHARLES

Property Specialists

Call us
01923 731313





Ground Floor

First Floor

GARSTON LANE, WD25

APPROX. GROSS INTERNAL FLOOR AREA 1284.02 SQ FT / 119.29 SQ M
 HARRYCHARLES: THIS IMAGE IS ILLUSTRATIVE ONLY - NOT TO SCALE. COPYRIGHT: THE IMAGE TAILOR LTD, 2026.

196 St Albans Road, Watford, Herts, WD24 4AS
 01923 731313 | info@harrycharles.co.uk
<https://www.harrycharles.co.uk>

Energy Efficiency Rating		Current	Potential
Very energy efficient - lower running costs			
(92 plus) A			
(81-91) B			
(69-80) C		71	77
(55-68) D			
(39-54) E			
(21-38) F			
(1-20) G			
Not energy efficient - higher running costs			
England & Wales		EU Directive 2002/91/EC	