



22 CORNFLOWER DRIVE, DONCASTER, DN4 7DH

22 CORNFLOWER DRIVE

DONCASTER, DN4 7DH

SUMMARY

Offered to the market with no onward chain, this well-presented two-bedroom first-floor apartment, built in 2005, occupies a desirable position within the popular Bessacarr area. The accommodation briefly comprises a welcoming entrance hall, a spacious lounge/dining area, a fitted kitchen, two generously sized bedrooms, and a modern family bathroom. The principal bedroom benefits from its own en-suite shower room, providing added convenience and privacy.

Externally, the property enjoys well-maintained communal areas and benefits from an allocated parking space. Ideally situated close to local amenities, shops, restaurants, reputable schools, and excellent transport links, including easy access to the motorway network. This attractive apartment would make an ideal purchase for first-time buyers, investors, or those looking to downsize, offering comfortable and low-maintenance living in a sought-after location.

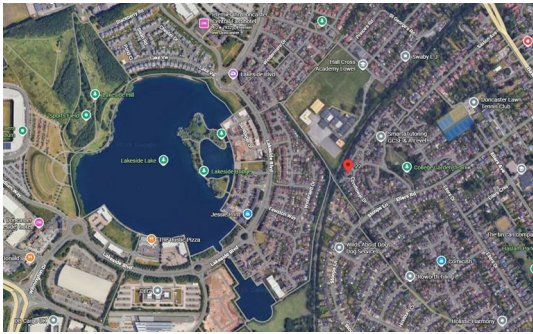
ADDITIONAL INFORMATION

Tenure: Leasehold

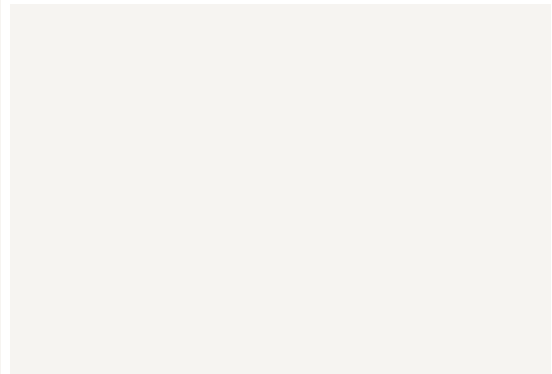
Council tax band: B

EPC: B

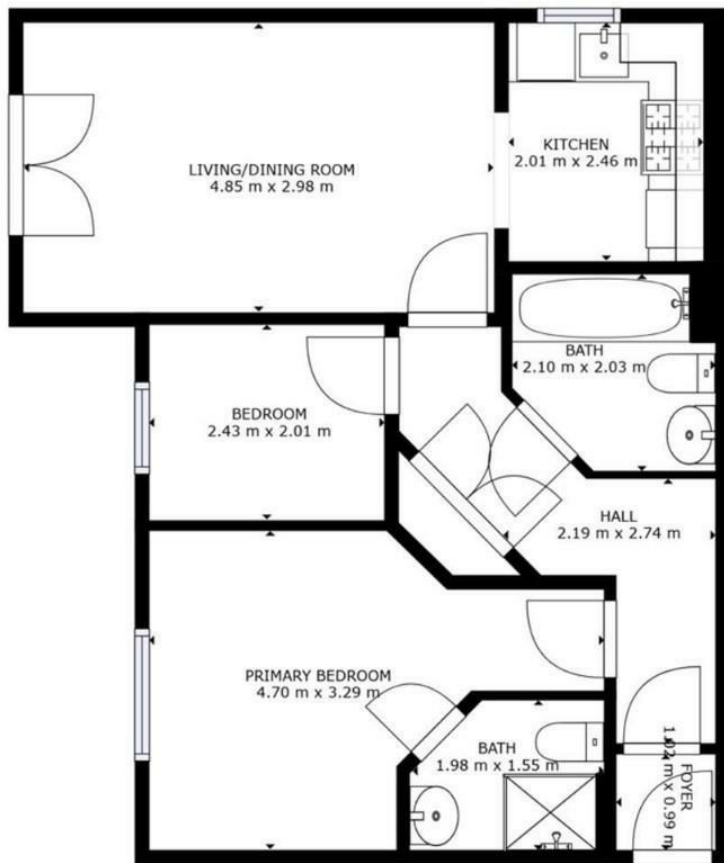




Score	Energy rating	Current	Potential
92+	A		
81-91	B	82 B	82
69-80	C		
55-68	D		
39-54	E		
13-38	F		
1-12	G		



FLOORPLAN



GOODMAN & LILLEY
BRANCH NETWORK

HENLEAZE

156 Henleaze Road
Henleaze
BS9 4NB
0117 213 0777
henleaze@goodmanlilly.co.uk

SHIREHAMPTON

9 High Street
Shirehampton
BS11 0DT
0117 213 0333
shire@goodmanlilly.co.uk

PORTISHEAD

Rembrandt House
36 High Street
Portishead
BS20 6EN
01275 430440
sales@goodmanlilly.co.uk

CLEVEDON

28 Hill Road
Clevedon
North Somerset
BS21 7PH
01275 403 660
clevedon@goodmanlilly.co.uk

LAND & NEW HOMES

0117 213 0151
LNH@goodmanlilly.co.uk

LETTINGS

01275 299010
lettings@goodmanlilly.co.uk

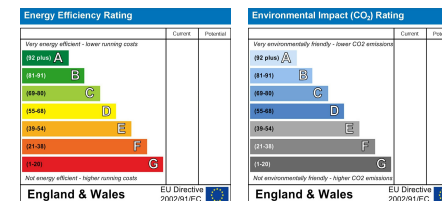
2 Bedrooms
Tenure - Leasehold

- Chain free
- EPC B

null Reception Rooms
Total 581.00 sq ft

2 Bathrooms
Council tax band - B

- Ensuite bathroom
- Allocated parking



Opening hours vary slightly in each office
Mon to Fri - Usually 9am till 6pm
Saturday 9.00am-4.00pm