



RESIDENTIAL PLOTS, BOLTACHAN, WEEM, PH15 2LB

IrvingGeddes  
W.S. • Solicitors • Estate Agents

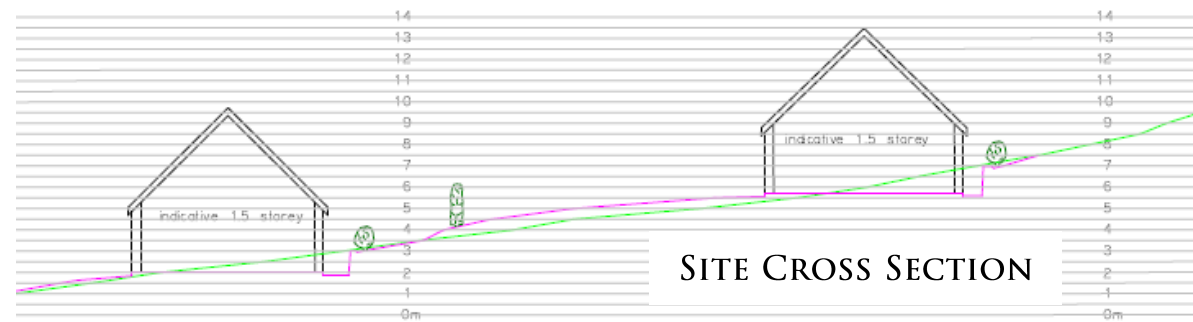
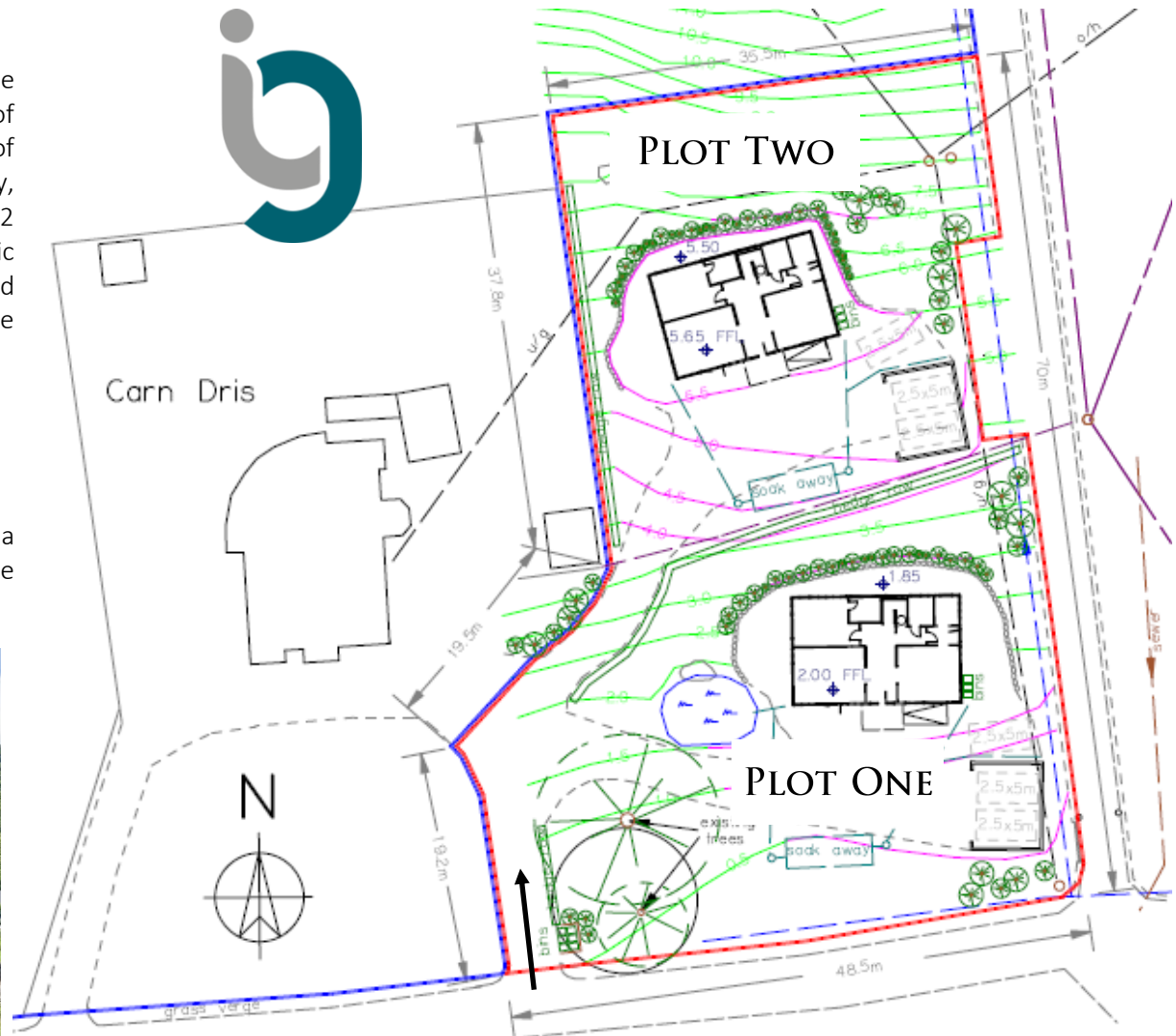
## RESIDENTIAL PLOTS, BOLTACHAN, WEEM, PH15 2LB

Irving Geddes are delighted to offer for sale two residential plots with outline planning permission, enjoying an idyllic rural location close to the village of Weem, and less than a mile (20min walk) to the popular Perthshire town of Aberfeldy. The sites have an attractive south-facing aspect over the Tay Valley, and have private access from the road. Generously sized at c.1500m<sup>2</sup>/1300m<sup>2</sup> respectively, services are located on/adjacent to the plots. Mains water, electric & draining, with surface water to on-site soakaway. Outline planning granted for 1.5 storey villas with detached garages, with full details available on the Perth & Kinross portal:

<https://planningapps.pkc.gov.uk/online-applications/simpleSearchResults.do?action=firstPage>

### Directions

From Aberfeldy head out of town over Wade's Bridge along the B846, taking a right turn just before the Ailean Chraggan Hotel on the corner. You will find the plots a short distance on the left.





Aberfeldy is a bustling town with an array of services, including a medical centre, a great selection of independent shops, cafés, galleries and restaurants, as well as the Birks cinema. The Breadalbane Academy provides nursery to sixth year secondary education and a community campus. The nine hole golf course with an impressive new clubhouse is nearby, and Water sports can be enjoyed on local lochs and rivers, including the rapids at Grandtully and a dedicated water sports centre at Loch Tay. The surrounding hills provide numerous walking and climbing routes, including several Munros. Fishing is available on the Rivers Lyon, Tummel and Tay, as well as local hill lochs.

The area of Perthshire has outstanding scenery and beauty spots: Glen Lyon, the conservation village of Fortingall, Kenmore and its beach on Loch Tay, The Queen's View at Loch Tummel and prominent local Munros such as Schiehallion and Ben Lawers.

These particulars are believed to be correct, but their accuracy is not guaranteed and they do not form part of any contract. All measurements are approximate only.



**Crieff**  
25 West High Street, PH7 4AU  
Tel: 01764 653771

**Comrie**  
1 Drummond Street, PH6 2DW  
Tel: 01764 670325

**Aberfeldy**  
6 The Square, PH15 2DD  
Tel: 01887 822722