



Gilbert Close, SE18

£325,000

Set within a stunning purpose-built development, this beautifully two double bedroom, two bathroom first floor flat is located within a gated development.

Situated in the beautifully maintained Royal Herbert Pavilions, close to Woolwich DLR and Elizabeth Line and regular buses to North Greenwich Jubilee line and within easy access of Blackheath Village.

Features

- Two Bedroom Apartment
- En Suite Bathroom
- Parking
- Refurbished Throughout
- Share Of Freehold
- Close To Transport



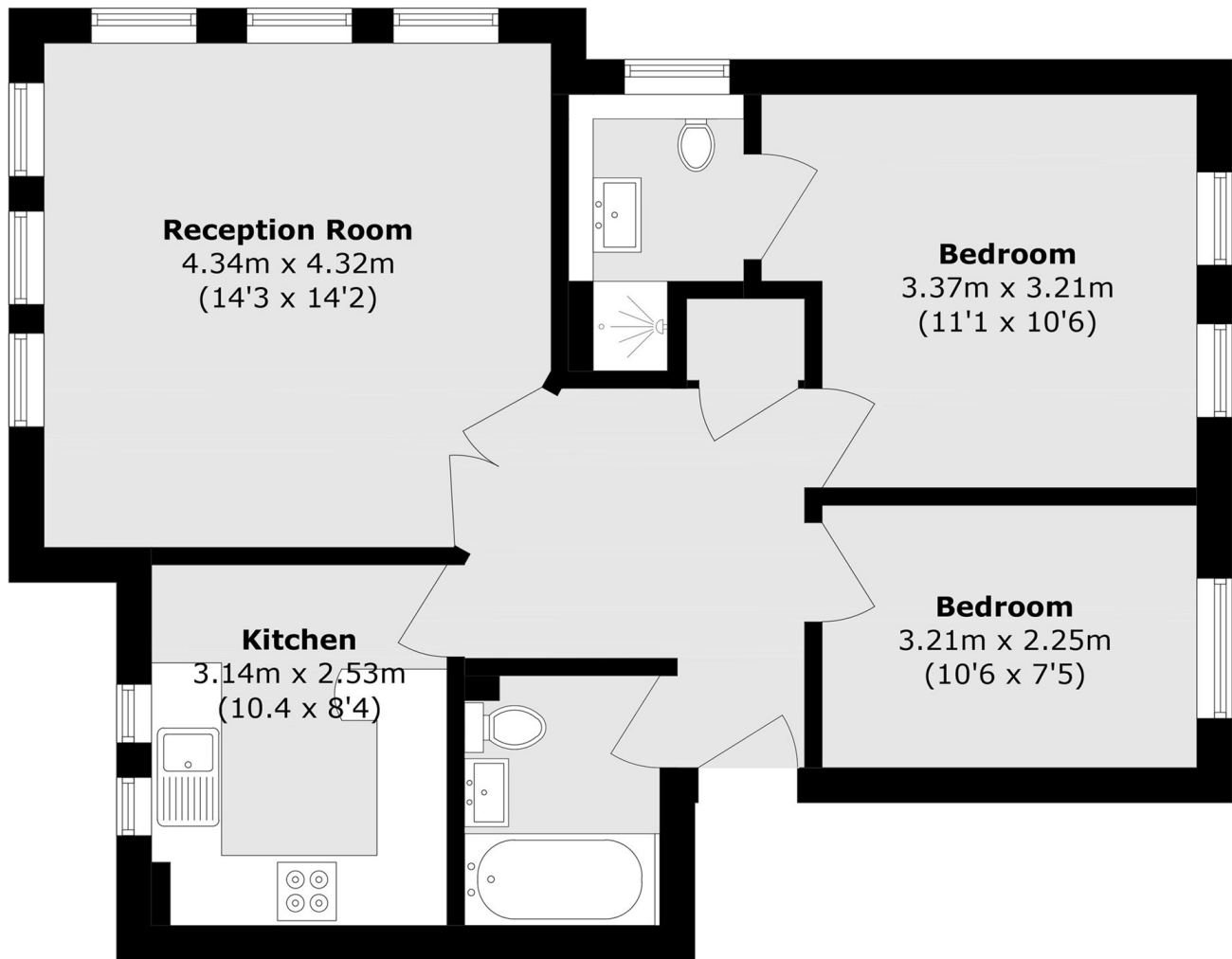
Gilbert Close, SE18

The property has been finished to an exceptional standard throughout and offers well-balanced accommodation, including a bright reception room and a newly fitted separate kitchen complete with integrated appliances.

There are two generous double bedrooms, with the main bedroom benefitting from an en suite shower room, in addition to a modern family bathroom.



Gilbert Close,
London, SE18



Total area (approx.): 62.9 sq. m (677.0sq. ft)