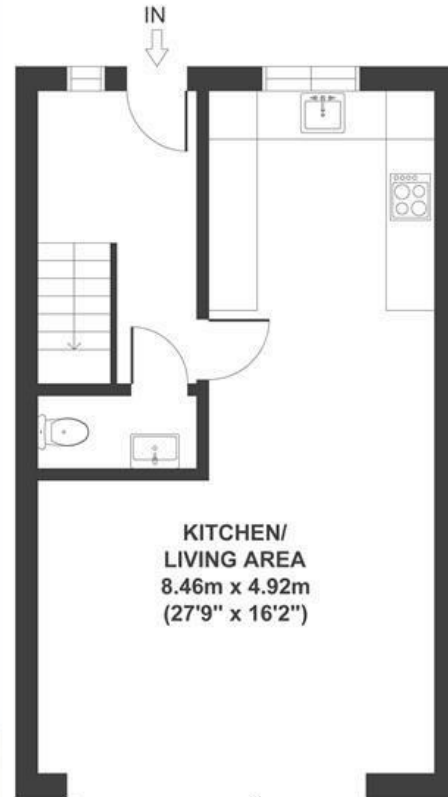


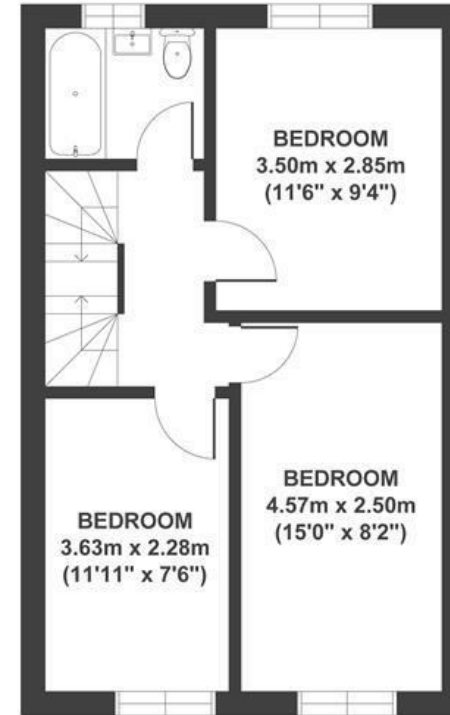
Bishport Avenue

HARTCLIFFE

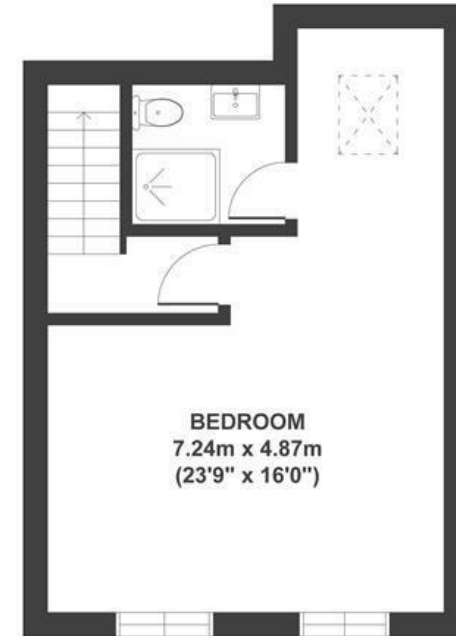
APPROXIMATE FLOOR AREA
115 SQM / 1238 SQFT



GROUND FLOOR



FIRST FLOOR



SECOND FLOOR

Boardwalk

Bishport Avenue

HARTCLIFFE, BRISTOL



£365,000



4 Bedrooms



BS13 9EH



3 Bathrooms

“We’ve taken great care in designing these four homes to feel bright, spacious and contemporary. The loft master bedroom is a particular highlight, with its elevated ceilings and generous glazing, offering a calm, light-filled retreat within the home.”

