



## Water Gardens, Nether Alderley SK10 4JY

£3,950 Per Month

- Prestigious development
- Spacious open-plan Kitchen, Living and Dining area
- Tranquil setting
- Offered furnished or unfurnished
- Large terrace
- Stunning views
- 2 Allocated parking spaces
- Corner plot



## PROPERTY SUMMARY

A modern apartment with stunning views in an exclusive development. Nestled in the picturesque Water Gardens of Nether Alderley. The corner-plot layout offers a fantastic living experience, with heaps of natural light. Available either furnished or unfurnished, allowing you the flexibility to personalise your living environment to suit your taste.

The stunning views over the tranquil water gardens create a serene backdrop, enhancing the overall ambiance of the home. Spanning an impressive 1,894 square feet, the property boasts a large terrace, open-plan kitchen/living/dining space, three well-appointed bedrooms and three bathrooms. Plus, 2 allocated parking spaces.

With its combination of comfort, style, and breathtaking views, this property presents a unique opportunity to enjoy a luxurious apartment in a sought-after location. Don't miss the chance to make this exceptional flat your new home.

3



3



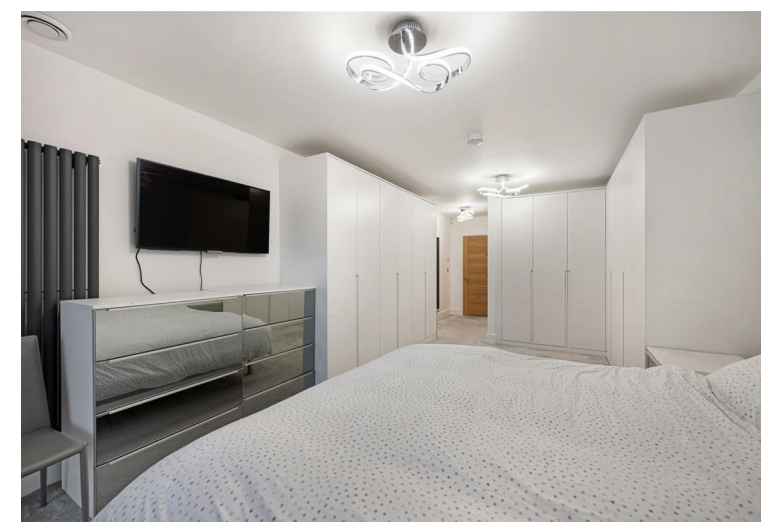
1











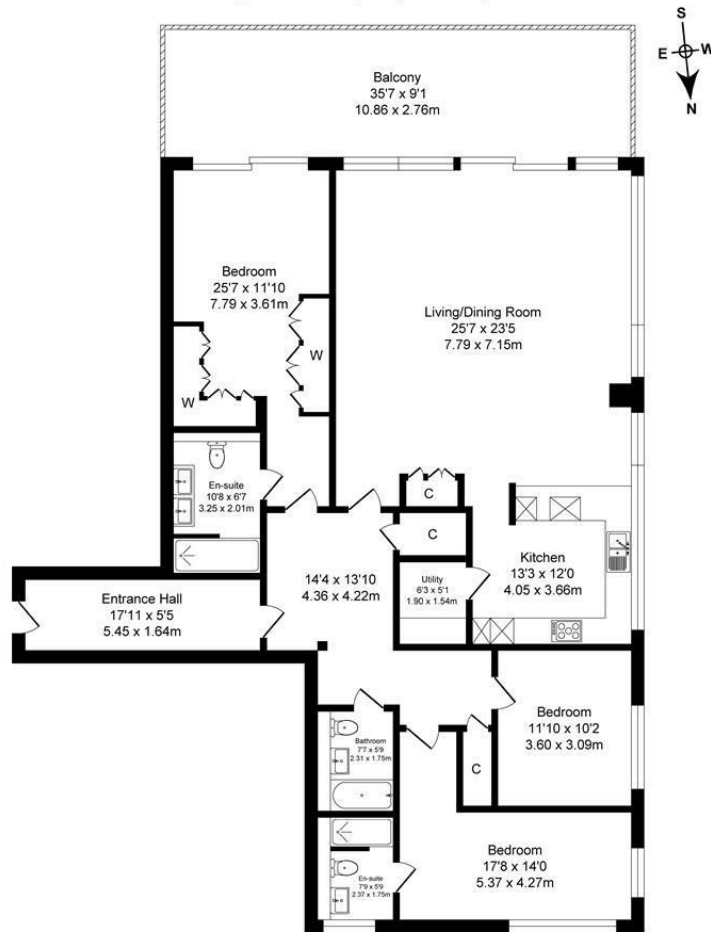






# Water Garden Total Approx. Floor Area 1819 Sq.ft. (169.0 Sq.M.)

Surveyed and drawn by Lens Media for illustrative purposes only. Not to scale. Whilst every attempt was made to ensure the accuracy of the floor plan, all measurements are approximate and no responsibility is taken for any error.



Approx. Floor  
Area 1819 Sq.Ft  
(169.0 Sq.M.)

Council Tax Band:  
Tax Band G

Tenure:

Local Authority:  
Cheshire East

Energy Efficiency Rating		
	Current	Potential
Very energy efficient - lower running costs		
(92 plus) A		
(81-91) B	86	86
(69-80) C		
(55-68) D		
(39-54) E		
(21-38) F		
(1-20) G		
Not energy efficient - higher running costs		
England & Wales	EU Directive 2002/91/EC	

**Agents Note:** Whilst every care has been taken to prepare these sales particulars, they are for guidance purposes only. All measurements are approximate and whilst every care has been taken to ensure their accuracy, they should not be relied upon and potential buyers are advised to recheck the measurements.



Cheshire Office:  
Blackbox  
Beech Lane  
Wilmslow  
Cheshire SK9 5ER

Email:  
sales@benzonbunch.co.uk

Telephone:  
01625 523605

Website:  
<https://www.bensonbunch.co.uk>