

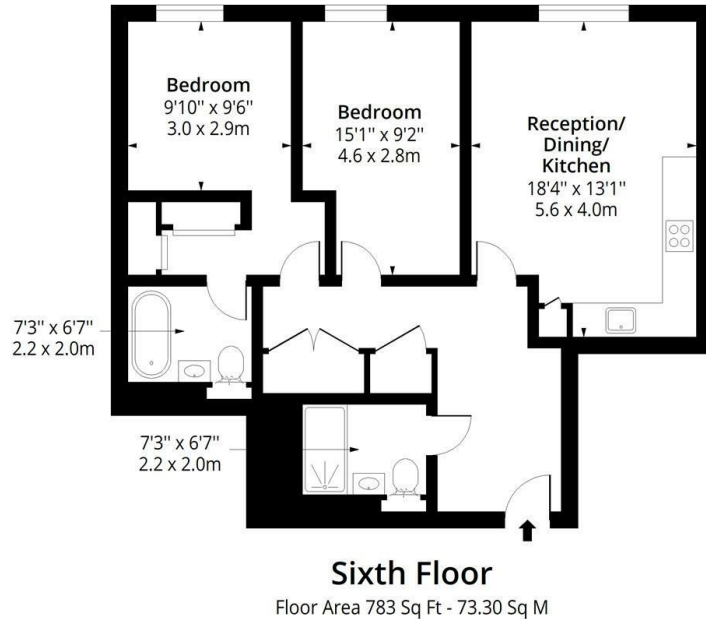


Flat, 42 Lily House, 2 Eden Grove, Staines-Upon-Thames, £2,100 Per month

- Two-bedroom, two-bathroom apartment
- Generous double bedroom with en-suite
- Located in the sought-after Eden Grove development
- Spacious open-plan living and kitchen area
- Contemporary main bathroom
- Excellent transport links nearby
- Modern fitted kitchen with integrated appliances
- Bright and airy throughout

Lily House TW18

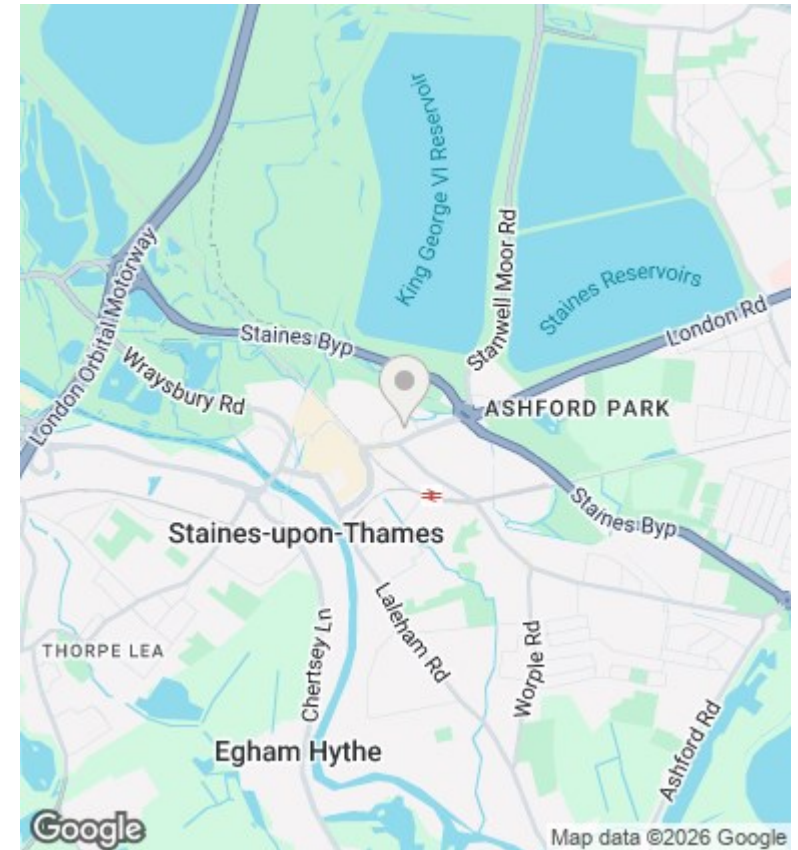
Approx. Gross Internal Area 783 Sq Ft - 73.30 Sq M



Measured according to RICS IPMS2. Floor plan is for illustrative purposes only and is not to scale. Every attempt has been made to ensure the accuracy of the floor plan shown, however all measurements, fixtures, fittings and data shown are an approximate interpretation for illustrative purposes only. 1 sq m = 10.76 sq feet.

Date: 13/5/2026

ipaplus.com



Directions

Viewings

Viewings by arrangement only. Call 0208 075 4927 to make an appointment.

Council Tax Band

D

EPC Rating:

C

Energy Efficiency Rating		Current	Potential
<i>Very energy efficient - lower running costs</i>			
(92 plus) A			
(81-91) B			
(69-80) C		72	72
(55-68) D			
(39-54) E			
(21-38) F			
(1-20) G			
<i>Not energy efficient - higher running costs</i>			
England & Wales	EU Directive 2002/91/EC		