



📍 10 Morse Close, Chippenham, Wiltshire, SN15 3FY

🔗 £850 Per Calendar Month

Extremely well presented 1 bedroom top floor apartment in a modern development in a very quiet location on the Pewsham estate.

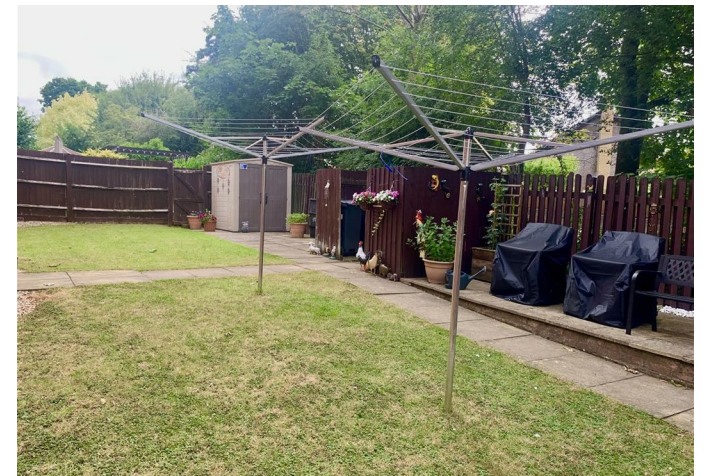
- TO LET
- ONE BEDROOM APARTMENT
- WELL PRESENTED
- TWO ALLOCATED PARKING SPACES
- UNFURNISHED
- CLOSE TO LOCAL AMENITIES
- GREAT LOCATION



🏠 EPC Rating C



Extremely well presented 1 bedroom top floor apartment in a modern development in a very quiet location on the Pewsham estate. Lovely bright accommodation comprises communal entrance with stairs to private entrance hall, living room, kitchen / dining with electric cooker, washing machine and fridge, one double bedroom and a bathroom with shower over the bath. Electric heating. There are 2 allocated parking spaces. Available from 4th August 2026, u/f, £850pcm



Disclaimer These particulars, whilst believed to be accurate are set out as a general outline only for guidance and do not constitute any part of an offer or contract. Intending purchasers should not rely on them as statements of representation of fact, but must satisfy themselves by inspection or otherwise as to their accuracy. No person in this firm's employment has the authority to make or give any representation or warranty in respect of the property. All measurements and distances are approximate only. Your home is at risk if you do not keep up repayments on a mortgage or other loan secured on it.



**For further details** 01380 722995  
lettings@strakers.co.uk

In branch | Online | On the move  
strakers.co.uk