



11 Rushton Mews

Corby, Northamptonshire NN17 5EQ



Simpson West

Simpson West Lettings are delighted to offer for rent this very well presented two double bedroom house which is situated on the fast growing Priors Hall Park development. The property has many features throughout and proudly boasts entrance hall, downstairs WC, kitchen and a lounge/diner with patio doors leading to the garden. Upstairs there is a master bedroom with fitted wardrobes and an en suite shower room. There is a further second bedroom and a family bathroom. Outside there is a fully enclosed rear garden and a garage. Viewing is highly recommended. Energy Rating B. Council Tax Band B.

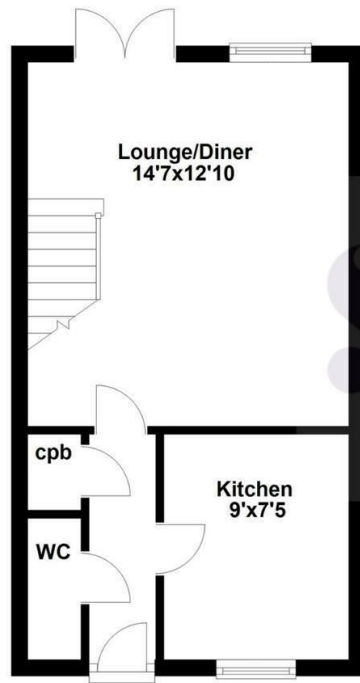


£1,050 PCM

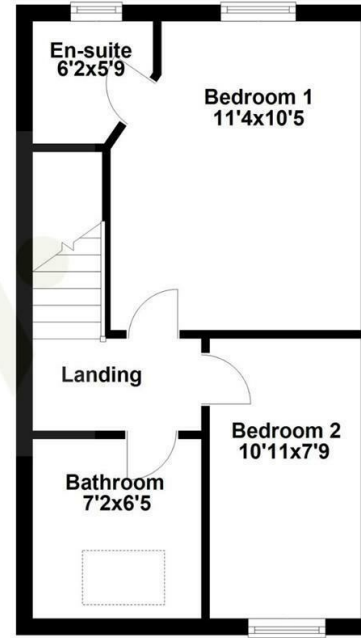
2 2 1



Ground Floor



First Floor



Floor plan not to scale - for guidance purposes only.
 Floor plan created by Simpson West for their use.
 Plan produced using PlanUp.



Energy Efficiency Rating		
	Current	Potential
Very energy efficient - lower running costs		
(92 plus) A		
(81-91) B		
(69-80) C		
(55-68) D		
(39-54) E		
(21-38) F		
(1-20) G	1	1
Not energy efficient - higher running costs		
England & Wales	EU Directive 2002/91/EC	



When you buy with Simpson West, you know **you'll be in safe hands**. From the moment you walk through our doors, we'll make you **feel truly welcome**. Our sales consultants and financial advisors will take you through **every step of the process**, offering **free expert advice** along the way, from help choosing the right mortgage and insurance through to finding your conveyancer. And if you need help selling your home too, **with over 20 years of local experience, you can trust us to get you moving**.



**Simpson
West**

Making Every
Journey Personal



01536 202007

info@simpsonwest.co.uk

<https://www.simpsonwest.co.uk/>

64 Corporation Street, Corby, Northants, NN17 1NH