



Ramsden Crescent, Pontefract WF8 2FU

Welcome to

Ramsden Crescent, Pontefract

Modern two bedroom home, great location and perfect for the first time buyer. Modern kitchen , light and spacious lounge, down stairs WC, modern house bathroom. Private rear garden, Double driveway. Perfect for the first time buyer or small family.



Entrance Hall

With a composite front entrance door.

Wc

With a low level flush WC, wash hand basin, vinyl flooring and a gas central heating radiator.

Lounge

13' 2" x 11' 8" (4.01m x 3.56m)

With a window to the front and two gas central heating radiators.

Kitchen

15' 3" x 9' 9" (4.65m x 2.97m)

A fitted kitchen consisting of wall, base and drawer units with work surfaces over, gas hob, electric oven, stainless steel splash back, plumbing for washing machine, space for free standing fridge freezer, storage cupboard, cupboard housing the combi boiler, vinyl flooring, a double radiator and French doors to the rear with side glass panels.

Landing

With a gas central heating radiator and access to the loft with a pull down ladder.

Bedroom One

11' 5" x 11' 9" (3.48m x 3.58m)

With a window to the front, two storage cupboards and a gas central heating radiator.

Bedroom Two

8' 3" x 11' 7" (2.51m x 3.53m)

With a window to the rear and a gas central heating radiator.

Bathroom

A low level flush WC, wash hand basin, bath with a shower over and screen, vinyl flooring, gas central heating radiator and a window to the rear.

Front Garden

A double driveway to the front.

Rear Garden

With side access to the rear garden, gate access, fenced boundaries, mainly laid to lawn with paved seating area.



view this property online williamhbrown.co.uk/Property/PON119686



Welcome to

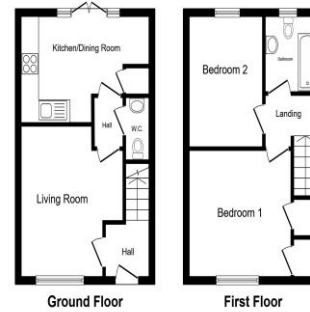
Ramsden Crescent, Pontefract

- Modern Two Bedroom House
- Double Driveway
- Private Rear Garden
- Three Years Left On The NHBC Certificate
- Solar Panels

Tenure: Freehold EPC Rating: A

Council Tax Band: B

£180,000



Please note the marker reflects the postcode not the actual property

view this property online williamhbrown.co.uk/Property/PON119686



Property Ref:
PON119686 - 0003

1. MONEY LAUNDERING REGULATIONS Intending purchasers will be asked to produce identification documentation at a later stage and we would ask for your co-operation in order that there is no delay in agreeing the sale. 2. These particulars do not constitute part or all of an offer or contract. 3. The measurements indicated are supplied for guidance only and as such must be considered incorrect. Potential buyers are advised to recheck measurements before committing to any expense. 4. We have not tested any apparatus, equipment, fixtures or services and it is in the buyers interest to check the working condition of any appliances. 5. Where an EPC, or a Home Report (Scotland only) is held for this property, it is available for inspection at the branch by appointment. If you require a printed version of a Home Report, you will need to pay a reasonable production charge reflecting printing and other costs. 6. We are not able to offer an opinion either written or verbal on the content of these reports and this must be obtained from your legal representative. 7. Whilst we take care in preparing these reports, a buyer should ensure that his/her legal representative confirms as soon as possible all matters relating to title including the extent and boundaries of the property and other important matters before exchange of contracts.

William H Brown is a trading name of Sequence (UK) Limited which is registered in England and Wales under company number 4268443, Registered Office is Cumbria House, 16-20 Hockliffe Street, Leighton Buzzard, Bedfordshire, LU7 1GN. VAT Registration Number is 500 2481 05.



william h brown



01977 791406



Pontefract@williamhbrown.co.uk



26 Market Place, PONTEFRAC, West Yorkshire,
WF8 1AT



williamhbrown.co.uk