



Lewes Road, Upperton, Eastbourne

£1,100 PCM

Key Features

- ◆ Two-bedroom, ground-floor apartment
- ◆ Convenient Upperton Location
- ◆ Currently being redecorated
- ◆ Short walk from town centre
- ◆ Close to hospital
- ◆ EPC rating C

2  1  1 


Local knowledge, national reach



Northwood are delighted to welcome to market this beautiful two-bedroom, ground-floor apartment in the popular Upperton area of Eastbourne.

Accommodation comprises: open-plan kitchen/living room, two bedrooms and bathroom with shower over bath.

Further benefits include: private entrance, gas central heating and double-glazing.

Located close to Eastbourne District General Hospital with easy access to Eastbourne town centre, this fantastic ground floor apartment is perfectly located for people looking to make the most of life on the sunshine coast.

PLEASE NOTE: THIS PROPERTY IS CURRENTLY BEING REDECORATED WITH NEW FLOORING LAID IN THE BEDROOMS





Please view our immersive virtual tour to fully appreciate this fantastic property:

<https://tour.giraffe360.com/c273aefc76c749ce8ec0da7b9ffbf7f4>

Mobile Phone Coverage and Broadband speeds can be checked on the Ofcom website:

<https://checker.ofcom.org.uk/>

Council Tax Band B: £2065

Holding Deposit: £250.00 (equivalent to one week's rent)

Full Deposit: £1265.00 (holding deposit + equivalent of four weeks' rent)

1st month's rent + Full Deposit: £2365.00

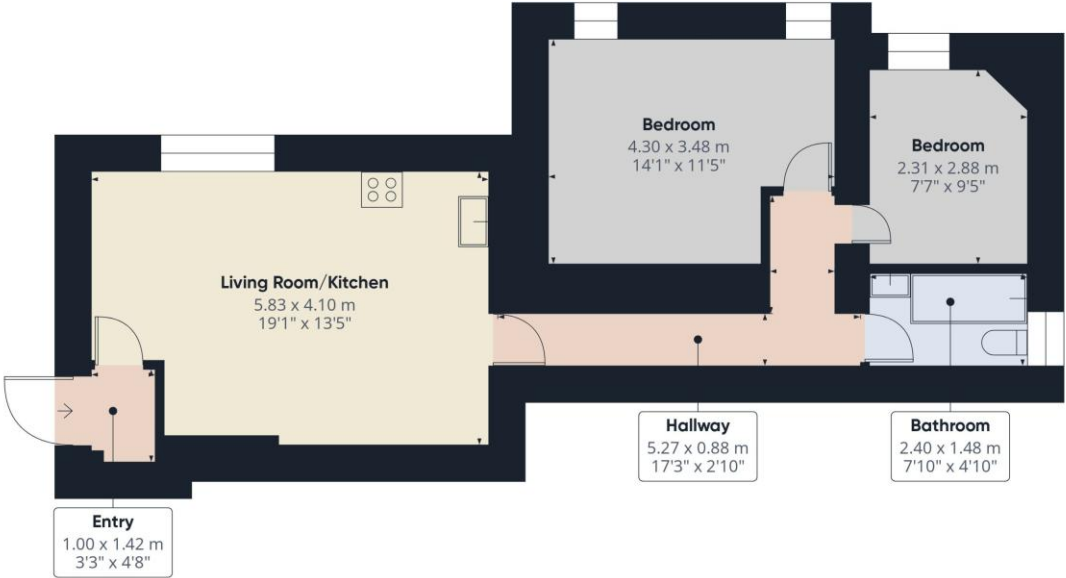
Total household income must exceed £33,000.00 to be considered for this property.

This property is managed by Northwood, should a maintenance issue arise, it can be reported 24 hours a day via our website.



Imagery ©2024 Google, Imagery ©2024 Airbus, Maxar Tech





Approximate total area⁽¹⁾
54.2 m²
584 ft²

(1) Excluding balconies and terraces

Calculations reference the RICS IPMS 3C standard. Measurements are approximate and not to scale. This floor plan is intended for illustration only.

GIRAFFE360



SEE MORE ONLINE

Northwood

81-83 South Street
Eastbourne
BN21 4LR
01323 744544
eastbourne@northwooduk.com