

SW19

it's all in the postcode...



Runnymede
Colliers Wood

Monthly Rental Of £1,600

- Two double Bedrooms
- Available from the 30th March
- Private garden
- Close to the Northern line tube
- Part furnished
- First floor maisonette
- Council tax Band C
- EPC Rating D



020 8544 2828

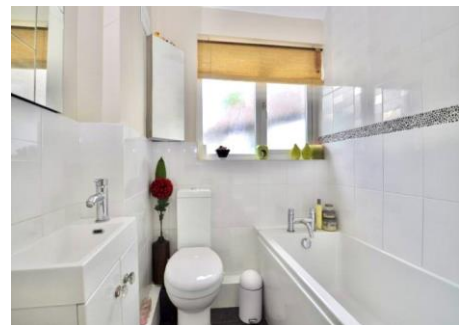
Wimbledon: Wimbledon Park: Colliers Wood

www.SW19.com

SW19 Estate Agents Ltd. Is registered in England & Wales No. 05508737

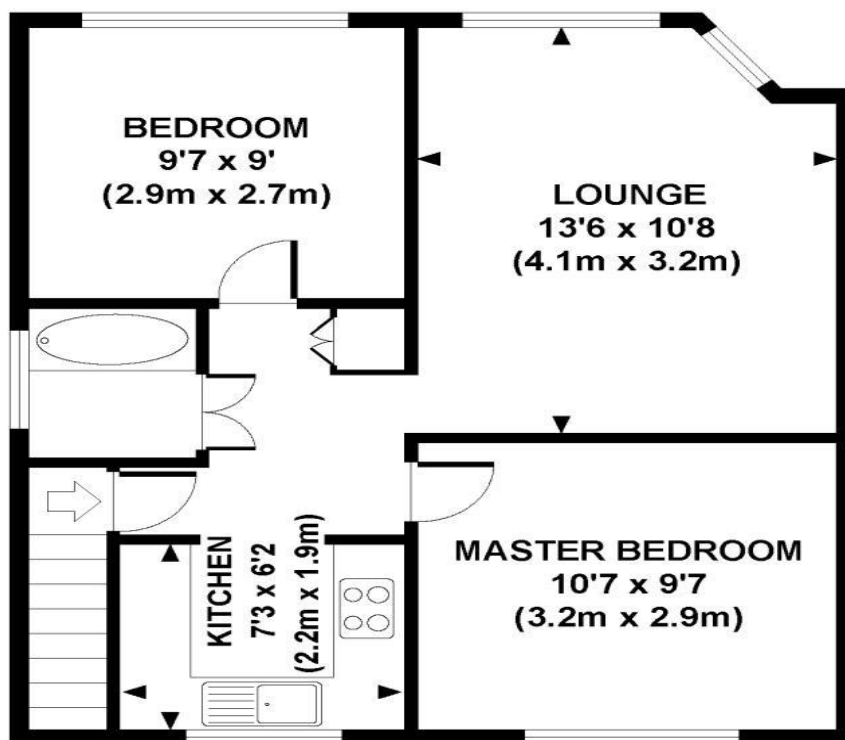
it's all in the postcode...

Two double bedroom first floor maisonette located within this quiet cul-de-sac close to the Northern line tube. Large private rear garden that backs directly onto the river Wandle, The maisonette would be ideal for young couples. The accommodation comprises two double bedrooms, lounge room, fitted kitchen and bathroom and a large private rear garden. Available from 30th March.



020 8544 2828
Wimbledon: Wimbledon Park: Colliers Wood
www.SW19.com
SW19 Estate Agents Ltd. Is registered in England & Wales No. 05508737

'it's all in the postcode...'



**FIRST FLOOR
GROSS INTERNAL
FLOOR AREA 452 SQ FT**



APPROX. GROSS INTERNAL FLOOR AREA 452 SQ FT / 42 SQ M

Copyright SW19

**Floorplans are for identification and guideline purposes only, not to scale.
Compliant with RICS code of measuring practice.**

These particulars are for guidance only and should not be relied upon as a statement or representation of fact. All measurements given are approximate only and should not be relied upon for ordering carpets, equipment etc. Purchasers should satisfy themselves by inspection or otherwise as to the accuracy of the statements contained within. Neither SW19 estate agents ltd or related companies or their employees can confirm structural conditions of the property or that any appliances or other facilities are in working order. Purchasers are strongly recommended to arrange their own survey.

020 8544 2828

Wimbledon: Wimbledon Park: Colliers Wood

www.SW19.com

SW19 Estate Agents Ltd. Is registered in England & Wales No. 05508737

'it's all in the postcode...'