



Gardiner Street, Gillingham ME7 1DN

£1,150 Per Calendar Month

Available now is this recently refurbished two bedroom flat, ideally located in Gillingham.

The property has been finished to a modern standard throughout, offering a bright and spacious living area, a separate fitted kitchen, two well-proportioned bedrooms, and a contemporary bathroom.

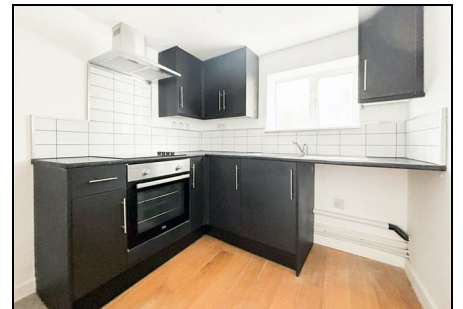
One of the standout features is the private courtyard area to the rear, providing a great outdoor space with minimal upkeep required.

The property is conveniently situated close to local amenities, transport links, and Gillingham town centre, making it well suited for working professionals or a small family.

Early viewing is highly recommended.

CR Real Estate are part The Ombudsman Redress Scheme and are a member of the Propertymark Client Money Protection Scheme. Tenant deposits are protected by the Tenancy Deposit Scheme. For more information, please contact us. Client Money Protection is provided by: Client Money Protect. Scheme Ref: CMP004209
Independent redress is provided by: The Property Ombudsman (TPO). Membership Number: E01687

- Available Now
- Bright & Spacious Living Area
- Modern Fitted Kitchen
- Private Rear Courtyard
- Convenient Gillingham Location
- EPC rating D
- Council tax band A
- Holding deposit £265



Energy Efficiency Rating			Environmental Impact (CO ₂) Rating		
Very energy efficient - lower running costs	Current	Potential	Very environmentally friendly - lower CO ₂ emissions	Current	Potential
(92 plus) A			(91-95) A		
(81-91) B			(81-91) B		
(69-80) C			(69-80) C		
(55-68) D			(55-68) D		
(47-54) E			(47-54) E		
(35-46) F			(35-46) F		
(21-34) G			(21-34) G		
(1-20) Not energy efficient - higher running costs			(1-20) Not environmentally friendly - higher CO ₂ emissions		
	47	57		41	50
England & Wales EU Directive 2002/91/EC			England & Wales EU Directive 2002/91/EC		