



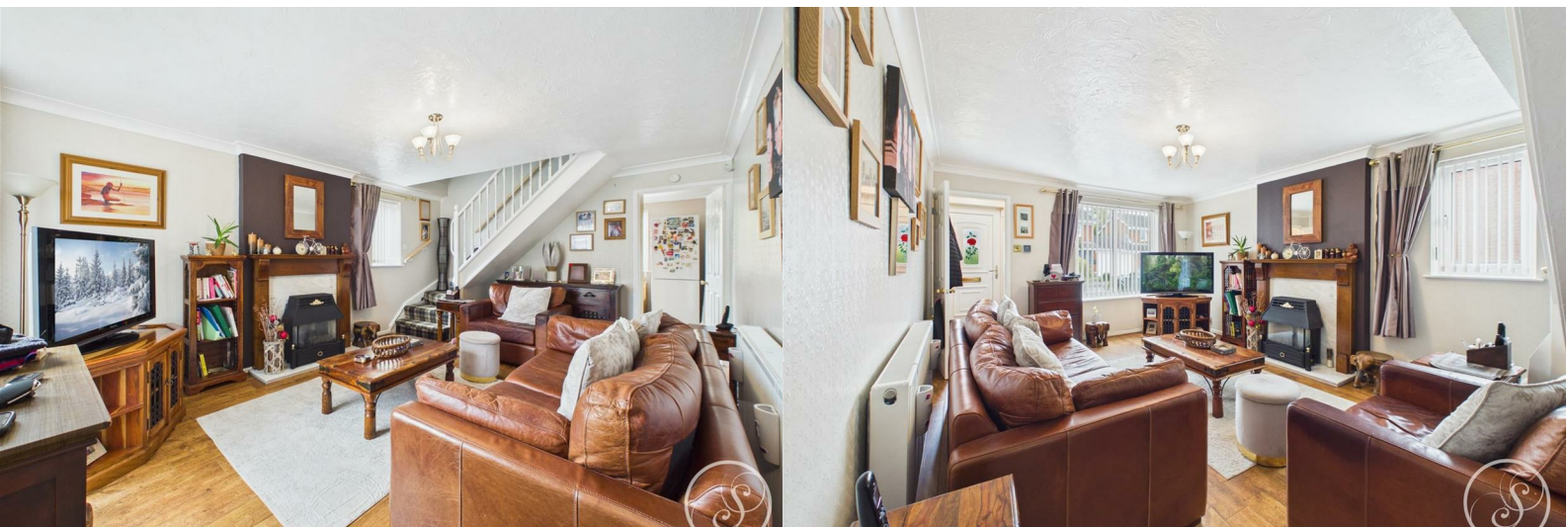
Stoneacre
Properties



Kingfisher Way

Leeds, LS17 8XA

£270,000



Kingfisher Way

Leeds, LS17 8XA

£270,000



Entrance

Entering the property you are welcomed into the entrance porch which leads into the lounge.

Lounge

Generous sized Lounge is finished with laminate flooring and comprises decorative coving and feature fireplace. Lounge leads through to the kitchen and upstairs.

Kitchen

Kitchen is made up of wall and base units and includes freestanding oven, hob with extractor above, space for washing machine, and space for fridge/freezer, ample storage space, and sink with drainer. The kitchen accommodates a dining table and leads out to the garden.

Bedroom 1

Double bedroom laid to carpet, with built in wardrobes.

Bedroom 2

Further double bedroom laid to carpet, overlooking the rear garden. Complete with fitted wardrobes.

Bathroom

Shower over full size bath, toilet and sink. Large storage cupboard which houses the boiler.

External

Front garden. Driveway runs down the side of the property. To the rear is a well maintained garden with wooden sheds.



Road Map



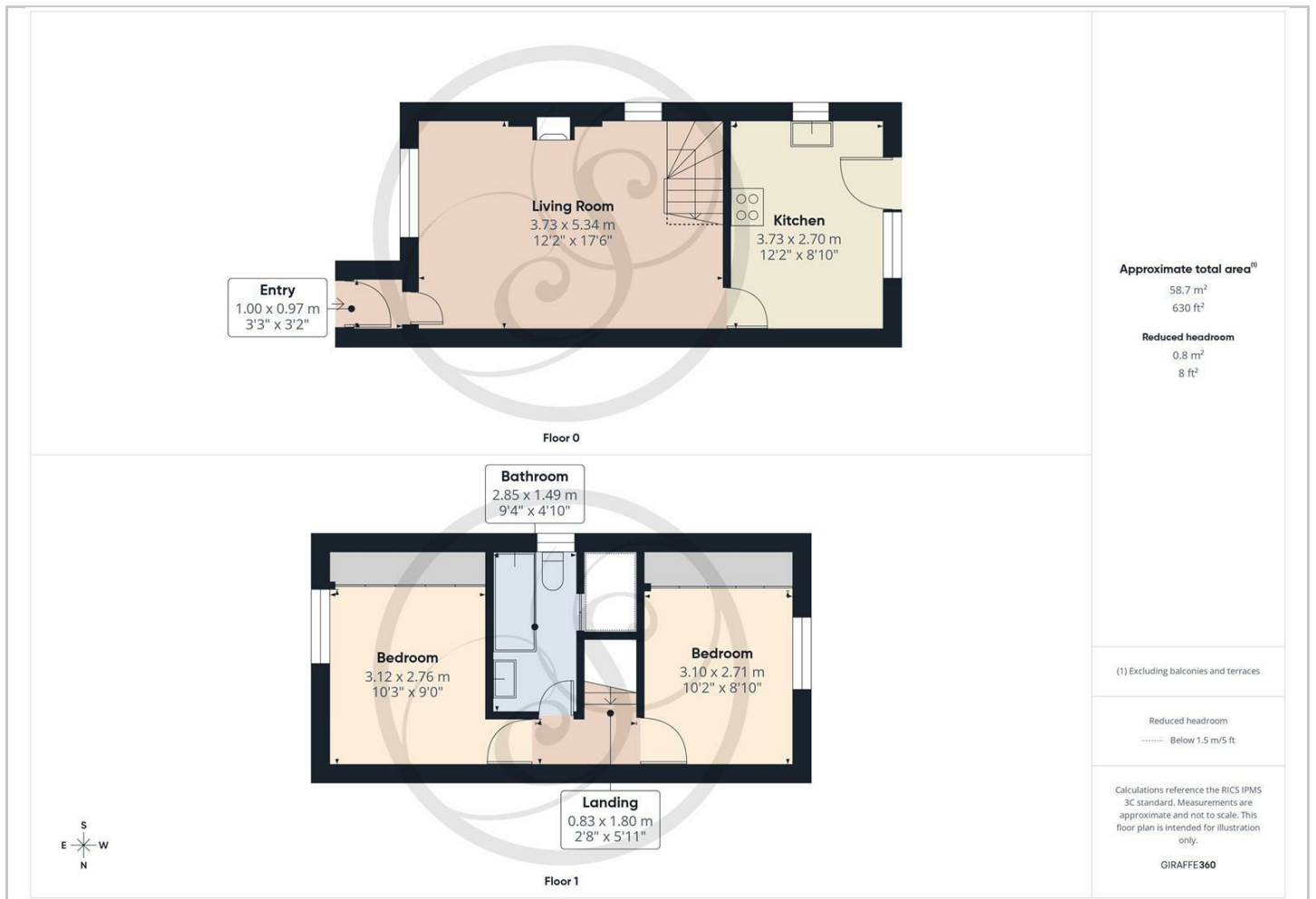
Hybrid Map



Terrain Map



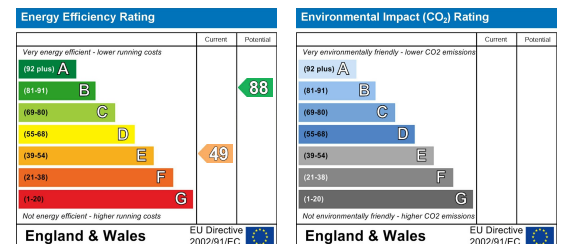
Floor Plan



Viewing

Please contact our Chapel Allerton Sales Office on 0113 237 0999 if you wish to arrange a viewing appointment for this property or require further information.

Energy Efficiency Graph



These particulars, whilst believed to be accurate are set out as a general outline only for guidance and do not constitute any part of an offer or contract. Intending purchasers should not rely on them as statements of representation of fact, but must satisfy themselves by inspection or otherwise as to their accuracy. No person in this firm's employment has the authority to make or give any representation or warranty in respect of the property.