

## Rockley Road, W14

£2,200 Per week

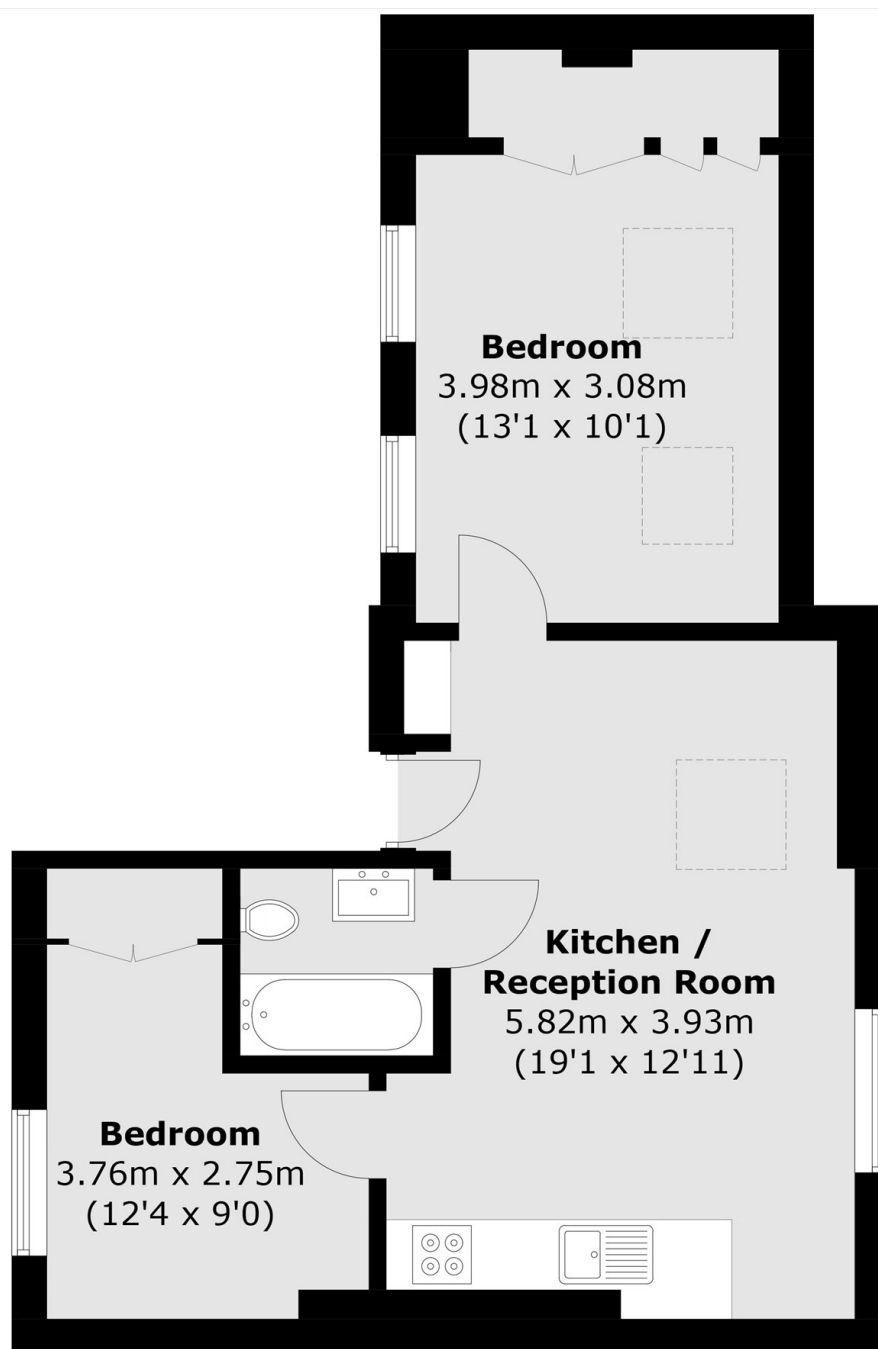
A bright top floor flat offering two bedrooms, a light-filled reception room, a modern kitchen and contemporary bathroom. This property is conveniently located close to local amenities and transport.

Rockley Road is a quiet residential street close to Shepherd's Bush, offering easy access to local shops, cafés, excellent transport links and Westfield London.

### Features

- Two Double Bedrooms
- Top Floor Flat
- Quiet Road
- Great Location
- Transport Links
- Ample Storage

# Rockley Road, London, W14



Total area (approx.): 49.3 sq. m (530.7 sq. ft)