



## St. Lukes Mews, W11

£7,000 Per calendar month

**Dexters**



## St. Lukes Mews, W11

An immaculately presented three double bedroom mews which has been recently refurbished to an exceptional standard throughout. The benefits to this property include; a semi open plan kitchen reception, two luxury en-suite bathrooms, underfloor heating and air conditioning.

St. Luke's Mews is near to the famous Portobello Road with a variety of shops and restaurants, and also close to Westbourne Grove and its fashionable boutique shops.

### Features

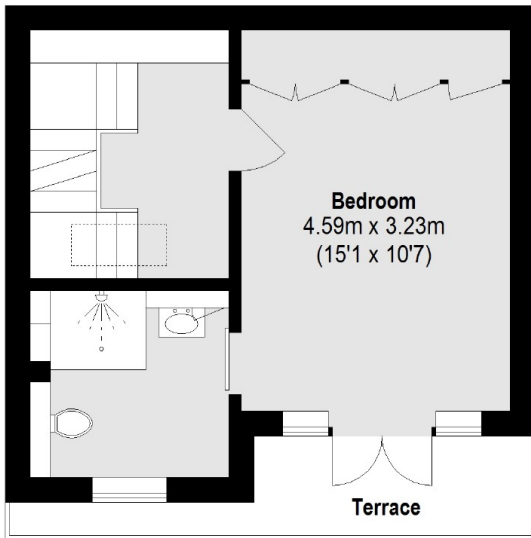
- Mews House
- Three Double Bedrooms
- Two En Suite Bathrooms
- Wooden Flooring
- Open Plan Kitchen
- Professionally Managed



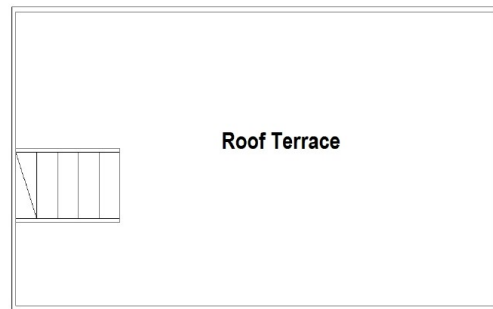




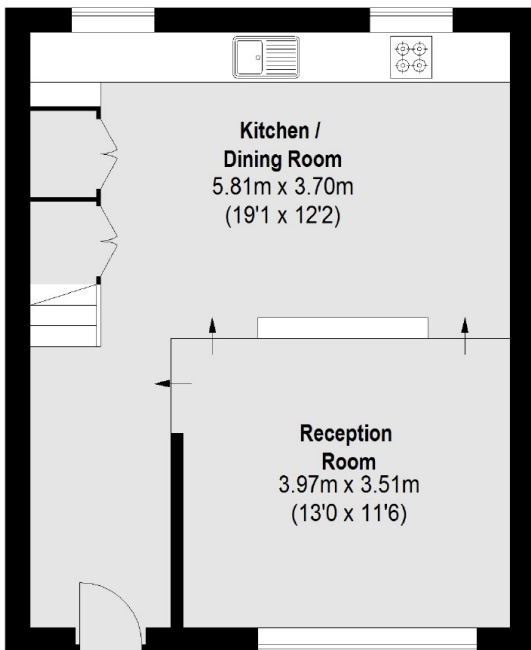
# St. Lukes Mews, London, W11



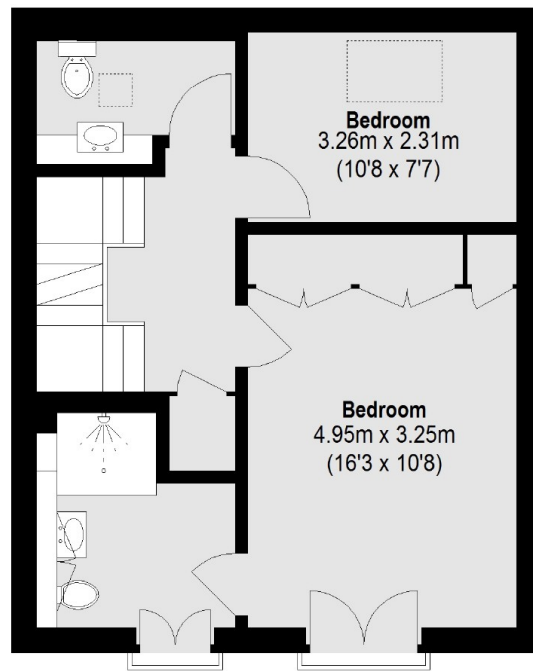
**Second Floor**



**Third Floor**



**Ground Floor**



**First Floor**

Total area (approx.): 113.02 sq. m (1216 Sq. ft)  
Terrace / Roof Terrace: 25.79 sq. m (277 Sq. ft)