



Apartment 69 Broadoaks, Streetsbrook Road, Solihull, B91 1QY

Offers in the Region of **£200,000**

This beautifully spacious one-bedroom, second-floor apartment is ideally located in the heart of Solihull. The property benefits from lift access and an allocated parking space, making it perfect for first-time buyers or investors alike. Inside, the apartment features integrated appliances, a generously sized bedroom with large sliding mirrored wardrobes, and a Juliet balcony. Contact us today to find out more or to arrange a viewing.

Bedrooms: 1 | Bathrooms: 1 | Receptions: 1

Council Tax Band: C

Property Type: Apartment

This beautifully presented and spacious one-bedroom, second-floor apartment is ideally situated in the heart of Solihull, offering convenient access to local amenities, transport links, and the town centre.

The property benefits from lift access and an allocated parking space, making it both practical and comfortable for modern living. Inside, the apartment features a well-designed layout with a bright and airy feel throughout. The contemporary kitchen comes complete with integrated appliances, seamlessly blending style and functionality.

Kitchen/Diner/Lounge 26.73m x 27.8m (87.7'0" x 91.2'0")

The kitchen is fitted with a Zanussi electric four-ring hob with oven, complemented by an extractor fan overhead. Sleek grey worktops are paired with a range of integrated appliances, including a dishwasher and fridge freezer, along with a practical dual sink. LED under-cupboard lighting and ceiling spotlights provide a bright, modern finish, while contemporary light flooring flows seamlessly throughout the kitchen and adjoining lounge area.

The open-plan layout offers an ideal dining and living space, complete with TV points and a generously sized window that fills the room with natural light. A radiator ensures comfort, and additional ceiling spotlights enhance the stylish, well-lit atmosphere.

Hallway 1.19m x 3.32m (3.9'0" x 10.9'0")

Entering through the composite front door, you are welcomed into a bright and inviting hallway, finished with contemporary light flooring. The space features a convenient phone intercom entry system and is complemented by modern ceiling spotlights and an electric radiator, creating a warm and stylish first impression.

Storage Cupboard 1.37m x 1.01m (4.5'0" x 3.3'0")

A useful storage cupboard houses the boiler and electrical switchboard, while also providing space for a Zanussi washer dryer, which is included in the sale.

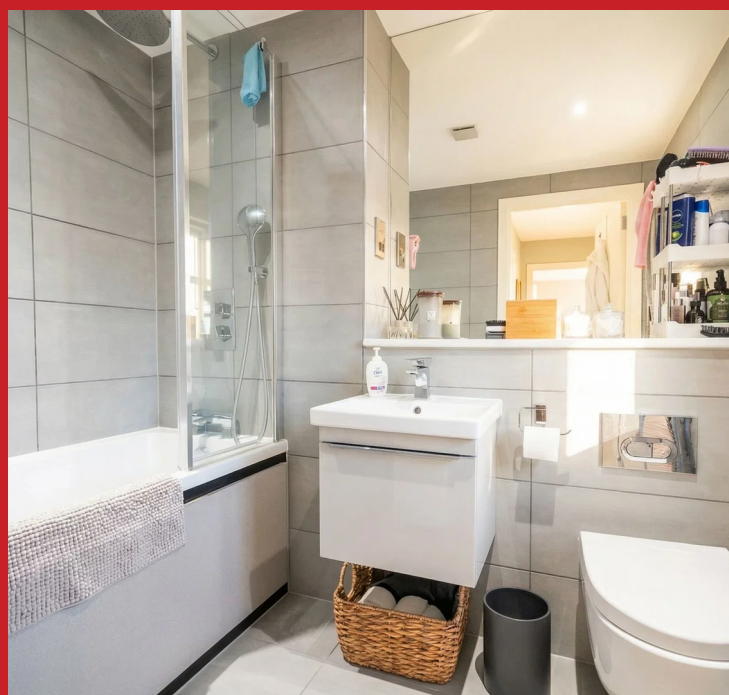
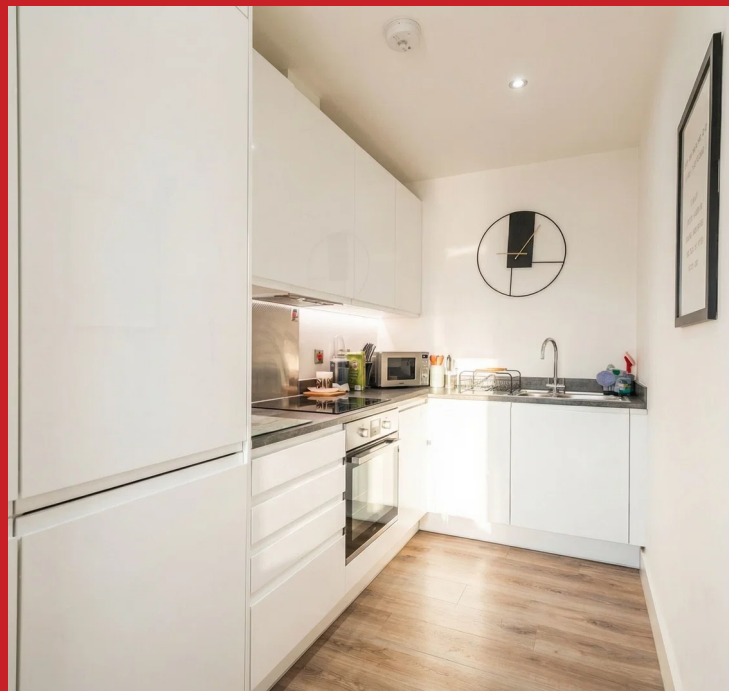
Bedroom 6.77m x 2.59m (22.2'0" x 8.5'0")

A spacious double bedroom, fully carpeted for comfort, featuring a Juliet balcony that allows for plenty of natural light. The room includes fitted mirrored sliding wardrobes, providing excellent storage, along with TV points, a radiator, and modern ceiling spotlights to complete the space.

Bathroom 2.32m x 1.65m (7.6'0" x 5.4'0")

The bathroom is finished with stylish grey tiling to both the floor and walls, creating a sleek, contemporary feel. It features a panelled bath with a rainfall shower head and additional handheld attachment, complete with a glass screen. A modern wall-mounted WC with concealed flush and a grey vanity sink unit with storage add to the clean, streamlined design.

Further benefits include a large wall mirror, shaver socket, ladder-style radiator, extractor fan, and ceiling spotlights, all enhancing both practicality and comfort.

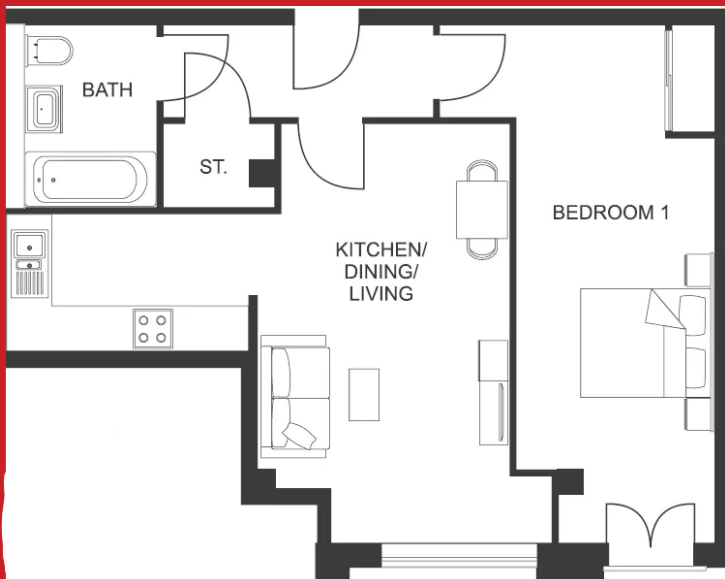




Contact us today!

0121 744 4144 + Option 3

newhomes@smart-homes.co.uk



Energy Efficiency Rating		
	Current	Potential
<i>Very energy efficient - lower running costs</i>		
(92 plus) A		
(81-91) B		
(69-80) C		
(55-68) D	60	60
(39-54) E		
(21-38) F		
(1-20) G		
<i>Not energy efficient - higher running costs</i>		
England & Wales	EU Directive 2002/91/EC 