



Property Webb  
At the HEART of your move

## Camps Rigg, Livingston EH54 8PF

Offers Over £140,000

🛏 2 🚿 1 🛋 1



Spacious 2 double bedroom semi-detached home in a convenient Livingston location, within walking distance of shops, schooling and the train station. Generous lounge/dining room with dual aspect windows, breakfasting kitchen, excellent storage throughout, modern bathroom and south-east facing rear garden. Cosmetic upgrading required - a fantastic opportunity to create a home to your own style.

📞 01506 637553

✉ info@property-webb-co.uk

🌐 www.property-webb.co.uk

📍 71 South Bridge St, Bathgate, EH48 1TJ

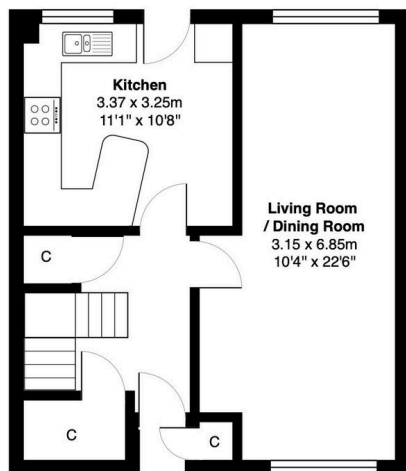


Property Webb  
At the HEART of your move

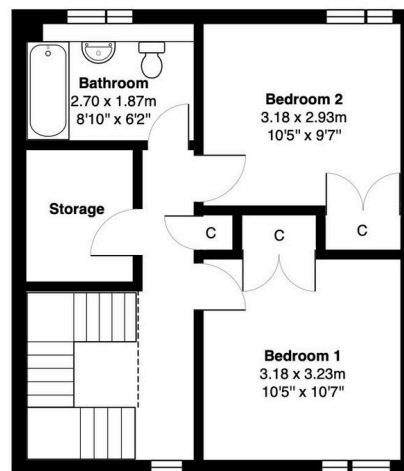
## Key Features

- Semi-detached house
- Large lounge/dining room
- 2 double bedrooms
- Spacious 3 piece bathroom
- On street parking
- Requires cosmetic upgrading
- Kitchen/breakfast room
- Large walk-in cupboard
- Front & rear gardens
- Local primary school & amenities

167 Camps Rigg, Carmondean, Livingston, EH54 8PF



Ground Floor



First Floor



Total Area: 83.7 m<sup>2</sup> ... 901 ft<sup>2</sup>

All measurements are approximate and for display purposes only

