

PENNINE ROAD BERKSHIRE, SL2 1SG

Nestled on the charming Pennine Road in Slough, this delightful semi-detached bungalow offers a perfect blend of comfort and convenience. With one well-proportioned bedroom, this property is ideal for individuals or couples seeking a peaceful retreat. The bungalow features a welcoming reception room, providing a warm space for relaxation or entertaining guests.

£300,000



1



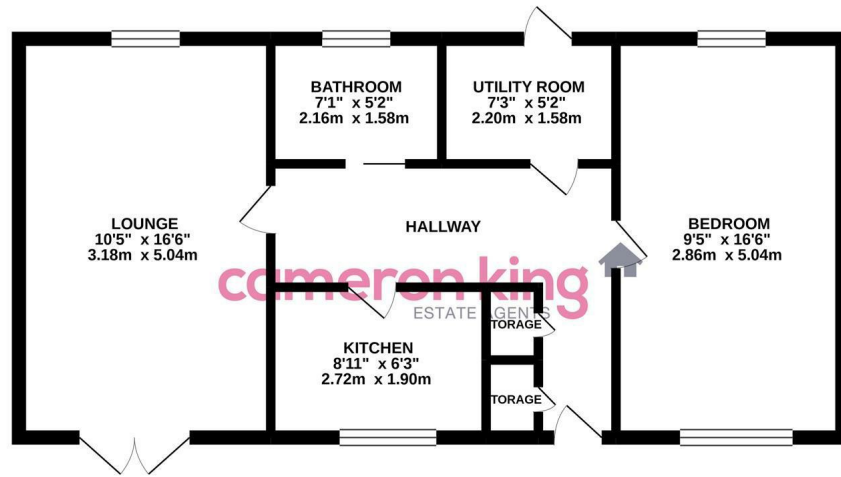
1



1

EPC D

GROUND FLOOR
564 sq.ft. (52.4 sq.m.) approx.



TOTAL FLOOR AREA: 564 sq.ft. (52.4 sq.m.) approx.

Whilst every attempt has been made to ensure the accuracy of the floorplan contained here, measurements of doors, windows, rooms and any other items are approximate and no responsibility is taken for any error, omission or mis-statement. This plan is for illustrative purposes only and should be used as such by any prospective purchaser. The services, systems and appliances shown have not been tested and no guarantee as to their operability or efficiency can be given.
Made with Mapbox ©2021

The property boasts a modern bathroom, ensuring all your daily needs are met with ease. One of the standout features of this bungalow is its private garden, a lovely outdoor space where you can enjoy fresh air and sunshine, perfect for gardening enthusiasts or those who simply wish to unwind in a tranquil setting.

Parking is made easy with space for one vehicle, adding to the practicality of this charming home. Additionally, the location is particularly advantageous, being in close proximity to Burnham train station. This offers excellent transport links for commuters or those wishing to explore the surrounding areas.

This one-bedroom bungalow is available for **SALE WITH NO ONWARD CHAIN**, making it an excellent opportunity for those looking to settle in a friendly neighbourhood with convenient access to local amenities and transport. Whether you are a first-time buyer or seeking a cosy home, this property is sure to meet your needs. Don't miss the chance to make this lovely bungalow your new home.

- One bedroom Bungalow
- 1.2 Miles from Burnham Railway Station (Main Paddington Line and Crossrail Station - 20 minutes to Central London)
- No Onward Chain
- Short Drive to Slough Town Centre
- Gas Central Heating
- Close to local schools and shops
- Fully Enclosed Private Garden
- Off Street Parking
- Newly decorated



cameron king
ESTATE AGENTS

411 Bath Road, Slough, SL1 5QL
t: 01628 667442
e: sales@cameronking.co.uk



rightmove

Zoopla

PrimeLocation.com