



## Christian Street, E1

£325,000

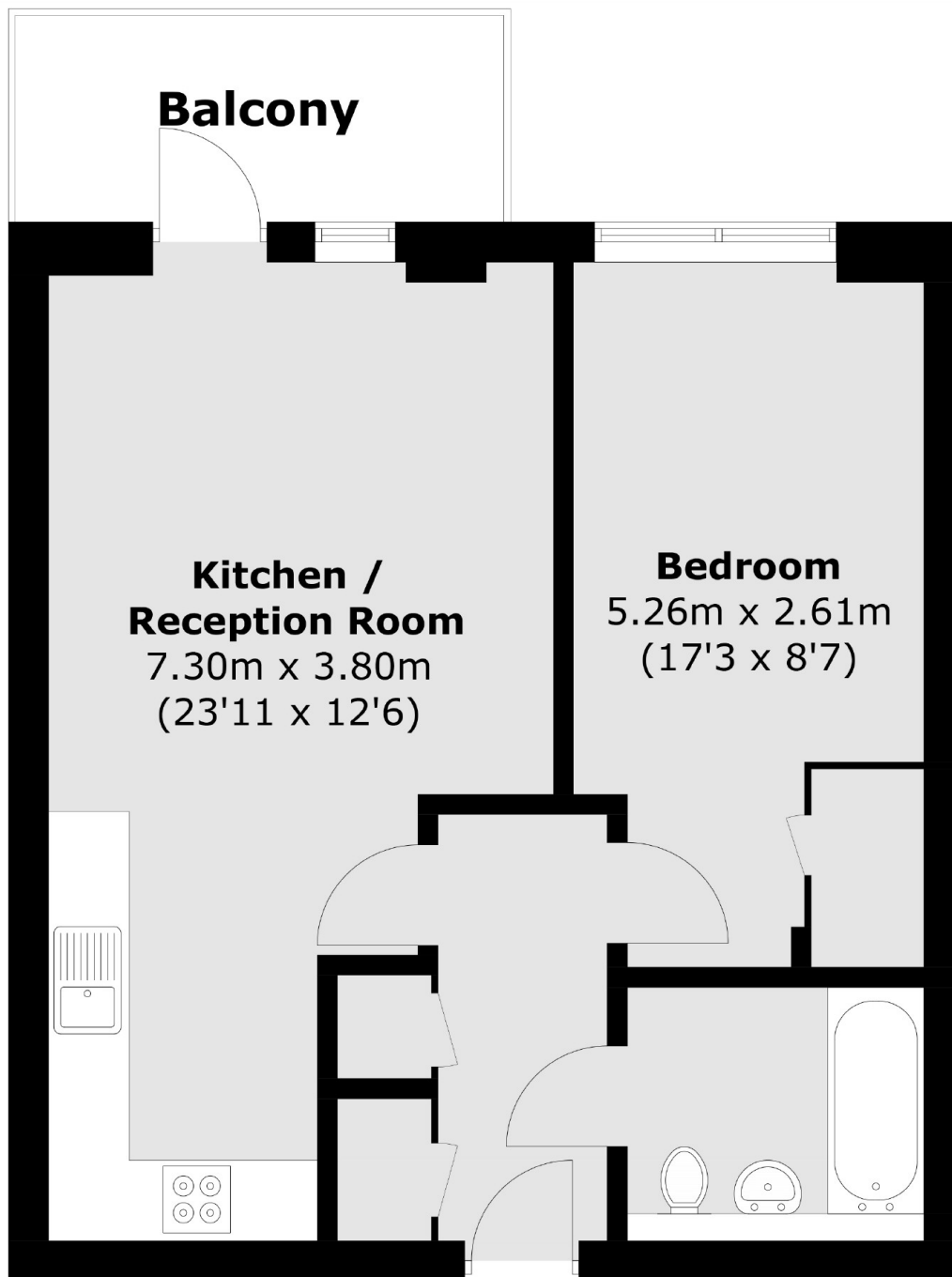
A bright, one double bedroom apartment located on the eleventh floor. This property offers a modern, open plan living/kitchen area with wooden flooring which lead onto a private balcony with Canary Wharf views. The apartment benefits from floor-to-ceiling windows, and a family bathroom. Residents have use of an on site Residents Gym and day porter.

This property is located just a short distance from Aldgate (Circle Line, Metropolitan Line) and Aldgate East (District Line, Hammersmith & City Line), as well as Shadwell for DLR links. The area offers a selection of bars, restaurants and cafes.

### Features

- Chain free
- One Double Bedroom
- Secure Development
- On-Site Concierge
- Private Balcony
- Residents Gym
- Long Lease

# Christian Street, London, E1



Total area (approx.): 47.8 sq. m (514.5 sq. ft)  
Balcony: 5.6 sq. m (60.3 sq. ft)

**Dexters**

Shoreditch  
44 Great Eastern Street  
London  
EC2A 3EP  
Sales  
0207 483 6371

Energy Rating: C. We aim to make our particulars both accurate and reliable. However they are not guaranteed; nor do they form part of an offer or contract. If you require clarification on any points then please contact us, especially if you're traveling some distance to view. Please note that appliances and heating systems have not been tested and therefore no warranties can be given as to their good working order.

 **RICS** | Regulated  
Estate Agent  
and Letting Agent

[dexters.co.uk](http://dexters.co.uk)