



Let **UK** Home

**1 Bedrooms**

**Flat**

**Located  
in Manchester**

**£1,750 Per Month**



[pmadmin@letukhome.co.uk](mailto:pmadmin@letukhome.co.uk)

<https://www.letukhome.co.uk/>

01615219812



# 141 Chester Road Manchester

M15 4ZL



Let UK Home are excited to offer this spectacular one-bedroom apartment in Elizabeth Tower, which is ideally situated in the heart of Manchester and within walking distance to Deansgate.

The flat comprises a spacious open kitchen with a stylishly attached dining area, a magnificent living room, one bright bedroom with wardrobes and one modern bathroom.

Residents will enjoy an exceptional range of luxury amenities, including the swimming pool, a state-of-the-art Gymnasium, and the Holistic Wellness Studio - all located on the 44th floor of Elizabeth Tower and offering breathtaking city views. Additional amenities include the Residents' Lounge, Private Dining Area, Co-Working Space, Communal Hub, Rooftop Terraces, and Concierge Service.

Elizabeth Tower is located on Crown Street/ Chester Road and within walking distance to the City centre. The surrounding area, known as the New Jackson Area, is a newly developed neighborhood located in the southwest part of Manchester city center. Residents can enjoy the presence of extensive public spaces and green areas, connected by a network of pedestrian and cycle pathways, perfect for outdoor activities and relaxation.

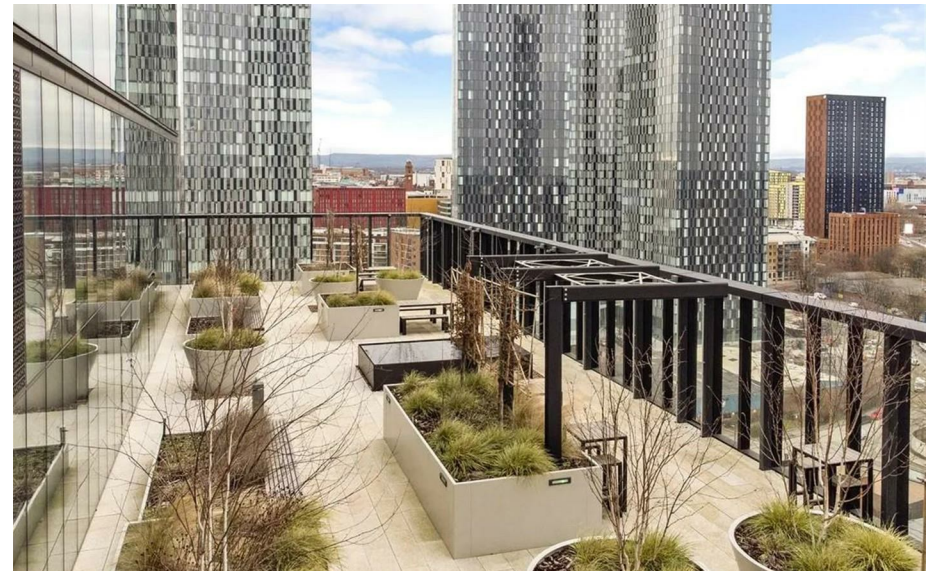
Deansgate tram & train links & bus links are within walking distance whilst the A56 is also very close allowing vehicles easy access in and out of the city centre. Whilst Deansgate offers a host of independent bars, restaurants and shopping, Regent Road retail park is also situated nearby with a large Sainsbury's, tk Maxx, Boots,

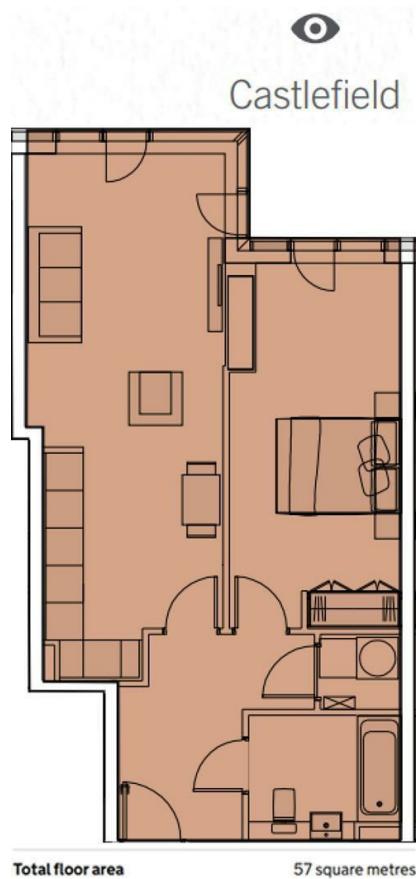
# 141 Chester Road Manchester

£1,750 Per Month



- 38th Floor
- 24h Security
- Gym
- Rooftop Terrace
- EPC Rating: B
- Concierge Service
- Swimming Pool
- Residents Lounge
- Co-working Space





Let **UK** Home

1/F, St James Tower 7 Charlotte  
Street  
Manchester  
M1 4DZ

01615219812

[pmadmin@letukhome.co.uk](mailto:pmadmin@letukhome.co.uk)

**Council Tax Band: C**

**Local Authority:**

Agents Note: Whilst every care has been taken to prepare these particulars, they are for guidance purposes only. All measurements are approximate and are for general guidance purposes only and whilst every care has been taken to ensure their accuracy, they should not be relied upon and potential buyers/tenants are advised to recheck the measurements.

Energy Efficiency Rating		Current	Potential
Very energy efficient - lower running costs			
(92 plus) <b>A</b>			
(81-91) <b>B</b>		85	85
(69-80) <b>C</b>			
(55-68) <b>D</b>			
(39-54) <b>E</b>			
(21-38) <b>F</b>			
(1-20) <b>G</b>			
Not energy efficient - higher running costs			
<b>England &amp; Wales</b>	EU Directive 2002/91/EC		

<https://www.letukhome.co.uk/>