



Clive Court

Maida Vale, W9

£5,250 per month
(£1,211.54 per week)

This charming three double bedroom apartment is situated on the first floor within this impressive Mansion block. The apartment comprises; spacious reception room, separate kitchen three double bedrooms and two bathrooms.

CHESTERTONS



Clive Court

Maida Vale, W9

- Three Bedrooms
- Popular Block
- Great Location

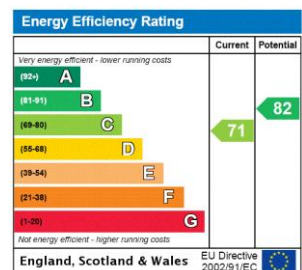


This charming three double bedroom apartment is situated on the first floor within this impressive Mansion block. The apartment comprises; spacious reception room, separate kitchen three double bedrooms and two bathrooms.

This stunning apartment further benefits; wooden flooring, spacious accommodation throughout, and has been refurbished to an excellent standard.

Clive Court is situated close to transport, cafes & the canal. With very easy access to Paddington & Central London.

Minimum Term: 12 months
Deposit Required: 6 weeks
Local Authority: City of Westminster
Council Tax Band: G
EPC Rating: C
Part Furnished



Chestertons Little Venice Lettings

26 Clifton Road
 Maida Vale
 London
 W9 1SX
 littlevenicelettingsusers@chestertons.co.uk
 02072662369
 chestertons.co.uk

Additional tenant charges apply (fees apply to non-AST tenancies only)
 Tenancy Agreement Fee: £300
 References per Tenant/Guarantor: £60
 Inventory check (approx. £100 – £250 inc. VAT)
chestertons.co.uk/property-to-rent/applicable-fees

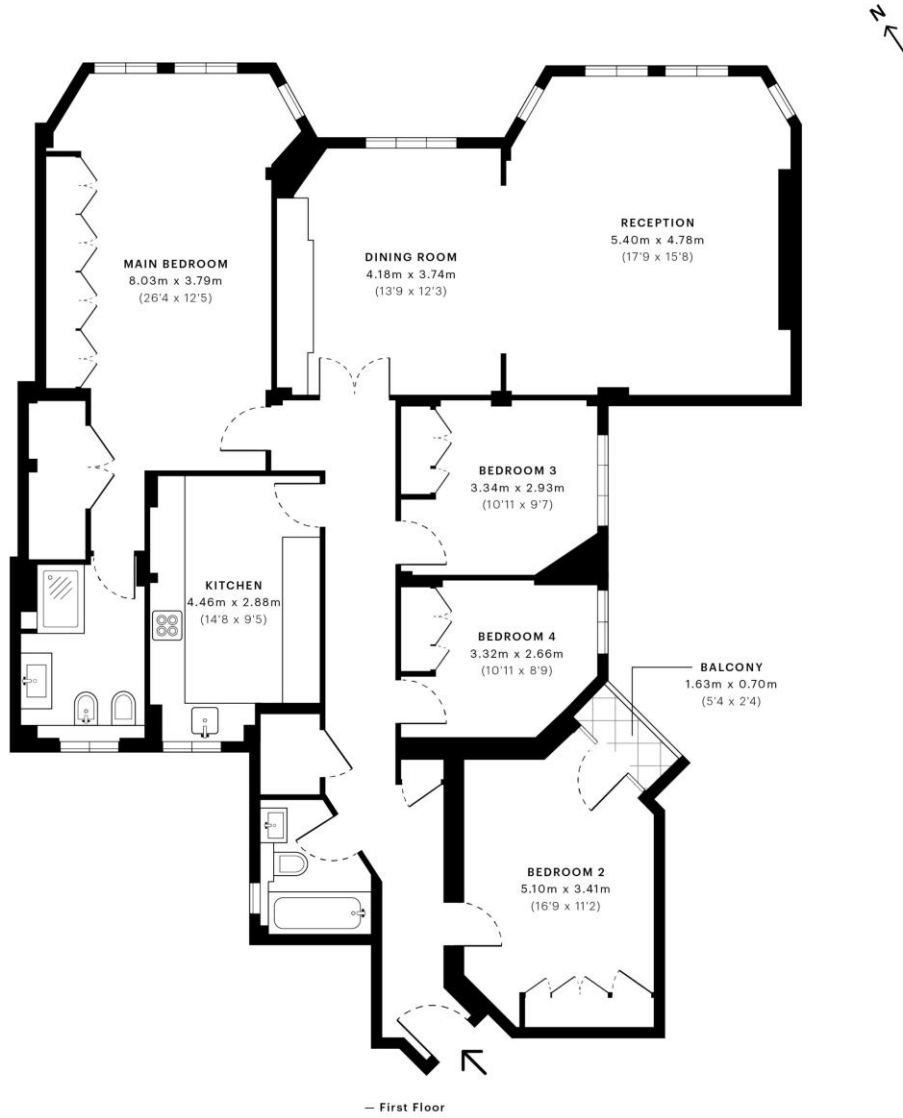


Clive court, W9

CAPTURE DATE 13/01/2023 LASER SCAN POINTS 128,849,739

GROSS INTERNAL AREA

146.44 sqm / 1576.27 sqft



GROSS INTERNAL AREA (GIA)
The footprint of the property
146.44 sqm / 1576.27 sqft

NET INTERNAL AREA (NIA)
Excludes walls and external features
Includes washrooms, restricted head height
136.09 sqm / 1464.86 sqft

EXTERNAL STRUCTURAL FEATURES
Balconies, terraces, verandas etc.
1.14 sqm / 12.27 sqft

RESTRICTED HEAD HEIGHT
Limited use area under 1.5 m.
0.00 sqm / 0.00 sqft



Spec Verified floor plans are produced in accordance with Royal Institution of Chartered Surveyors' Property Measurement Standards. Plans and gardens are illustrative only and excluded from all area calculations. Due to rounding, numbers may not add up precisely. All measurements shown for the individual room lengths and widths are the maximum points of measurements captured in the scan.

IPMS 2B RESIDENTIAL 150.40 sqm / 1618.89 sqft
IPMS 3C RESIDENTIAL 141.19 sqm / 1519.74 sqft

SPEC ID 563c12ed4c4584c0dd9d442a7

