



Canada Road, Walmer, Deal

Guide Price £235,000

DOMINIC MURPHY POWERED BY exp TM UK

@ dominic.murphy@exp.uk.com

dominicmurphy.exp.uk.com

01304 746 016

Canada Road, Walmer, Deal

NO CHAIN WORRIES - Ideally situated close to Walmer Beach and a range of local amenities, this well-presented two-bedroom, two-bathroom garden flat offers everything you need right on your doorstep.

****The property benefits from a share of the freehold, is self-managed, and boasts a long 991-year lease***

Internally, a private entrance leads directly into a modern fitted kitchen, which flows through to the living room and onward into the hallway. From here, you'll find two generously sized bedrooms, with the principal bedroom benefitting from its own en-suite bathroom. There is also a three-piece showeroom and an additional office room, ideal for home working or extra storage.

Externally, the property boasts a private garden, complete with a shed for storage - perfect for enjoying outdoor space by the coast. Residents also benefit from allocated private parking.

Location - The home is just moments from Walmer Green, the historic bandstand, and the pebble shoreline. A popular promenade and cycle path runs along the coast, offering a scenic route into the charming seaside town of Deal, less than half a mile away. Walmer Railway Station is also nearby, providing convenient links to London.

****Please note some of the images have been staged using AI enhancement***

Quote reference DM0223





Approx. room sizes:

Kitchen: 2.95m × 2.71m (9'8" × 8'11")

Living room: 3.30m × 2.89m (10'10" × 9'6")

Bedroom 1: 3.85m × 3.38m (12'8" × 11'1")

En-suite Bathroom: 1.88m × 2.23m (6'2" × 7'4")

Bedroom 2: 3.75m × 3.30m (12'4" × 10'10")

Study: 2.52m × 1.51m (8'3" × 5'0")

Bathroom: 2.83m × 1.68m (9'3" × 5'6")

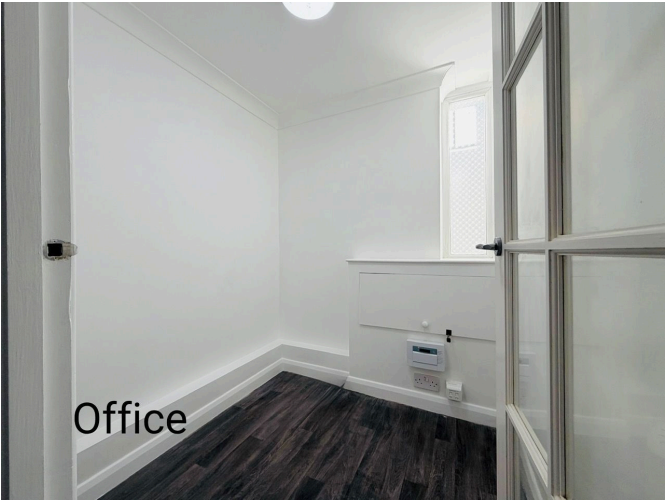
Garden to rear







En-suite



Office



Lower Ground Floor

Approx. 61.7 sq. metres (664.5 sq. feet)



Total area: approx. 61.7 sq. metres (664.5 sq. feet)

This plan is for layout guidance only. Not drawn to scale unless stated. Windows and door openings are approximate. Whilst every care is taken in the preparation of this plan, please check all dimensions, shapes and compass bearings before making any decisions reliant upon them.
Plan produced using PlanUp.

eXp World UK Ltd is a registered company at Level 37, 25 Canada Square, London, E14 5LQ.

Registered company number is 12016573. VAT Registration Number is 327 4120 29