

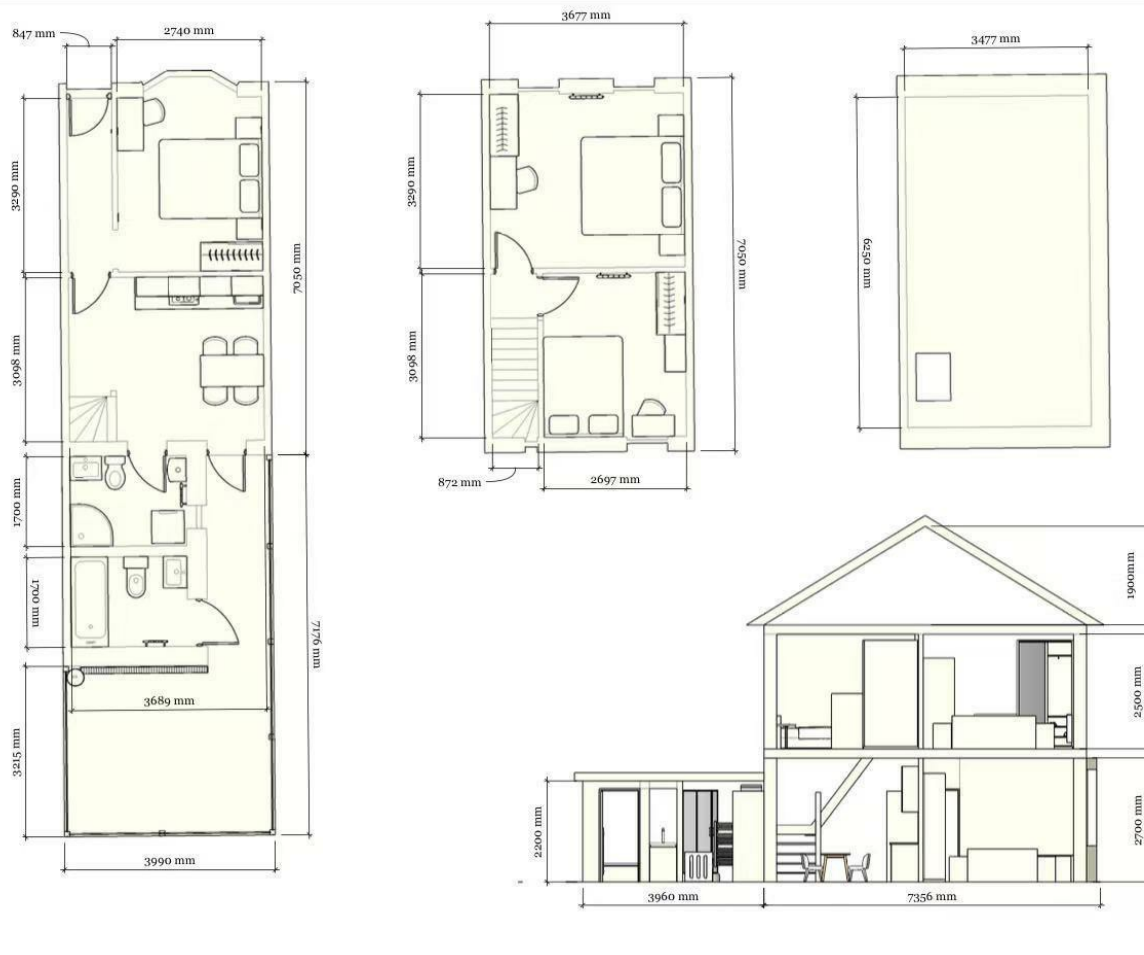
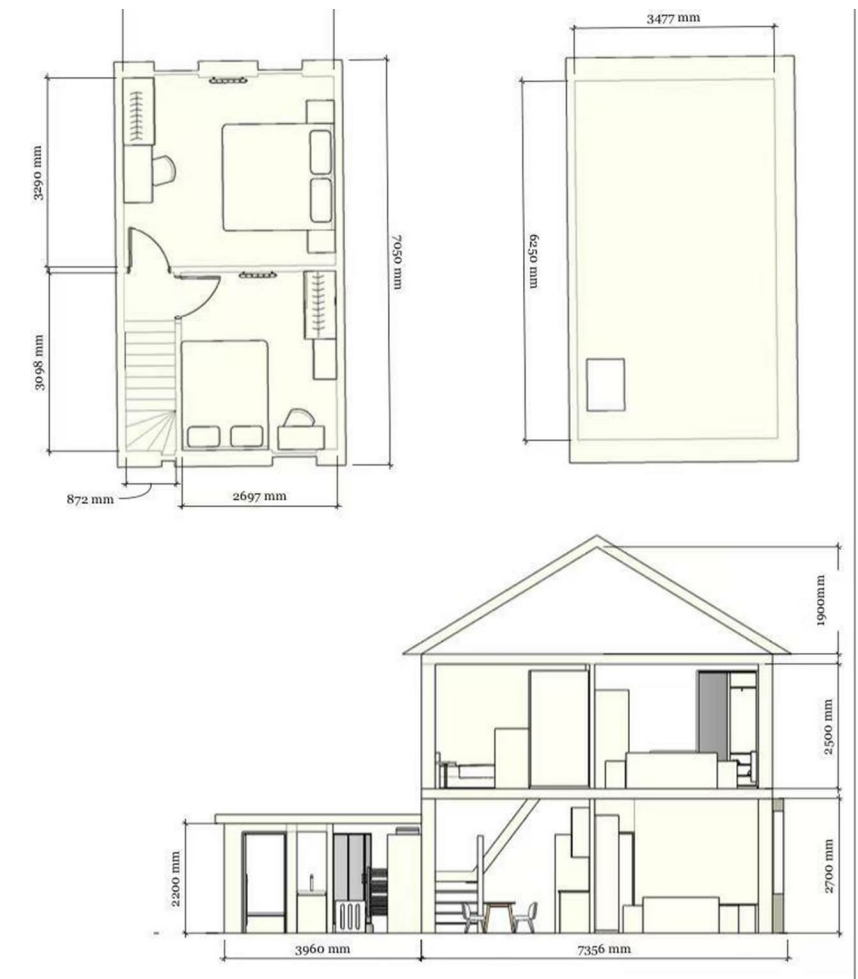
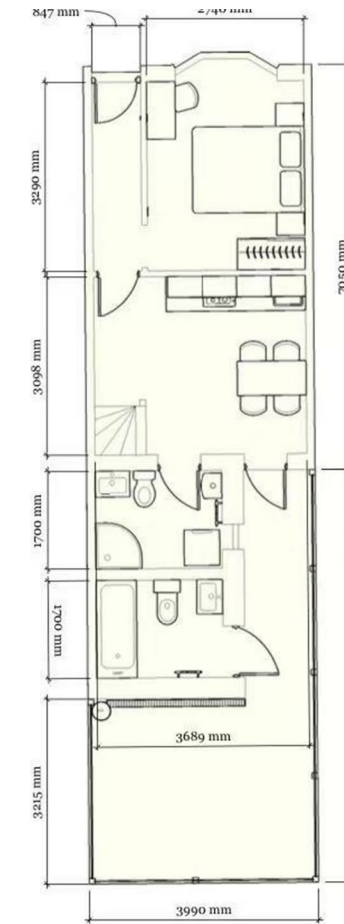
Directions

Viewings

Viewings by arrangement only. Call 02033696888 to make an appointment.

EPC Rating

Energy Efficiency Rating		Current	Potential
Very energy efficient - lower running costs			
(92 plus) A			
(81-91) B			
(69-80) C			
(55-68) D			
(39-54) E			
(21-38) F			
(1-20) G			
Not energy efficient - higher running costs			
England & Wales		EU Directive 2002/91/EC	



NZ94 1, Bryant Street, London, E15 4RU

£4,000 Per Month

Bryant Street, London E15 4RU

*** Please quote reference NZ94 when contacting the office ***

With three well-proportioned bedrooms, this property is perfect for families or professionals seeking a spacious living environment. The house features a welcoming reception room, ideal for entertaining guests or enjoying quiet evenings at home.

The two bathrooms provide ample facilities for busy mornings, ensuring that everyone has their own space to prepare for the day ahead. The layout of the house is thoughtfully designed, making the most of the available space while maintaining a warm and inviting atmosphere.

Situated in a lively neighbourhood, residents will benefit from easy access to local amenities, including shops, restaurants, and parks. The excellent transport links nearby make commuting to the city centre or exploring the wider London area a breeze.

This property, referenced as JC25071807, presents a wonderful opportunity for those looking to establish their home in one of London's most sought-after locations. With its appealing features and prime location, this house is sure to attract interest from a variety of potential buyers or renters. Don't miss the chance to make this lovely house your new home.



Council Tax Band: C