



48 Newbould Lane Broomhill, Sheffield, S10 2PL £1,450 PCM

Three double bedroom property situated in the much sought after area of Broomhill close to Universities and Hospitals. The property comprises of: 3 double bedrooms, family bathroom, to reception rooms and kitchen. On road parking, rear garden. Unfurnished. Available 10TH AUGUST 2026

- Three double bedroom terrace property
- Modern Kitchen
- Dining room
- Living room
- Family Bathroom with shower over bath, WC and basin
- On road parking (permit)
- rear garden
- AVAILABLE 10TH AUGUST 2026
- Unfurnished
- COUNCIL TAX BAND B

Viewing

Please contact our ELR Europa Link Office on 01142689900 if you wish to arrange a viewing appointment for this property or require further information.



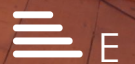
3



1

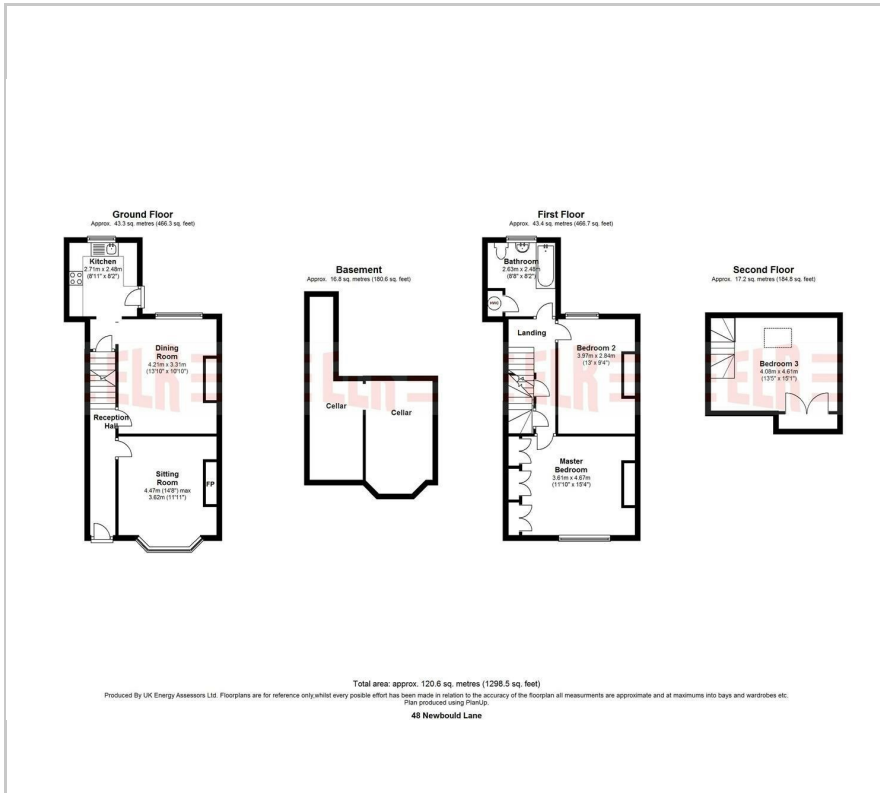


2



E

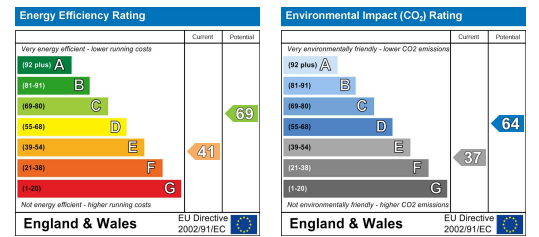
Floor Plan



Area Map



Energy Efficiency Graph



These particulars, whilst believed to be accurate are set out as a general outline only for guidance and do not constitute any part of an offer or contract. Intending purchasers should not rely on them as statements of representation of fact, but must satisfy themselves by inspection or otherwise as to their accuracy. No person in this firm's employment has the authority to make or give any representation or warranty in respect of the property.