

# Frank Harris & Co.



**Globe View, High Timber Street, EC4V**

**£525,000**

A good sized one bedroom flat presented in immaculate order with a new bathroom, kitchen with integrated appliances, bedroom with fitted cupboards and a bright reception room overlooking the internal atrium. There are wooden floors throughout and Share of Freehold.



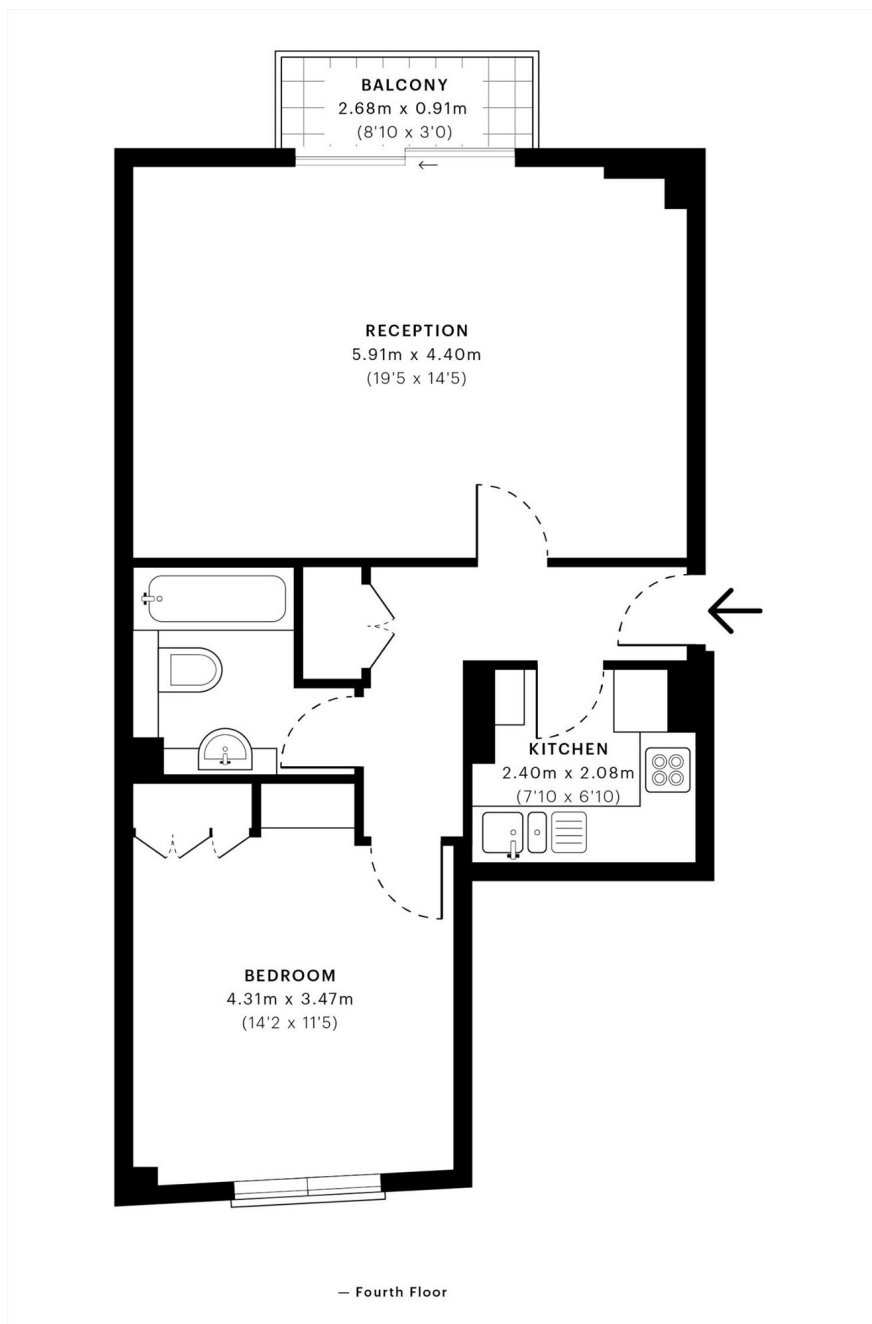
Located adjacent to Millenium bridge and a short walk to the South Bank where you will find Borough Market, the Tate Modern, the London Eye and the National and Globe theatres. Within a short walk to the City's financial institutions and the numerous bars, cafes, shops and restaurants.

Transport links include Mansion House (Circle and District lines), St Pauls (Central line). National rail includes Blackfriars with trains to Gatwick and Luton airport and Cannon Street mainline station.

- One Bedroom Flat • Fourth Floor • Concierge •
- Riverside Development • No Onward Chain • Long Lease •



# Frank Harris & Co.



Frank Harris & Co. Barbican and City  
87 Long Lane, London,  
EC1A 9ET  
020 7600 7000  
citysales@frankharris.co.uk

Energy Rating: C. We aim to make our particulars both accurate and reliable. However they are not guaranteed; nor do they form part of an offer or contract. If you require clarification on any points then please contact us, especially if you're traveling some distance to view. Please note that appliances and heating systems have not been tested and therefore no warranties can be given as to their good working order.

