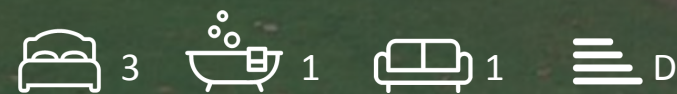


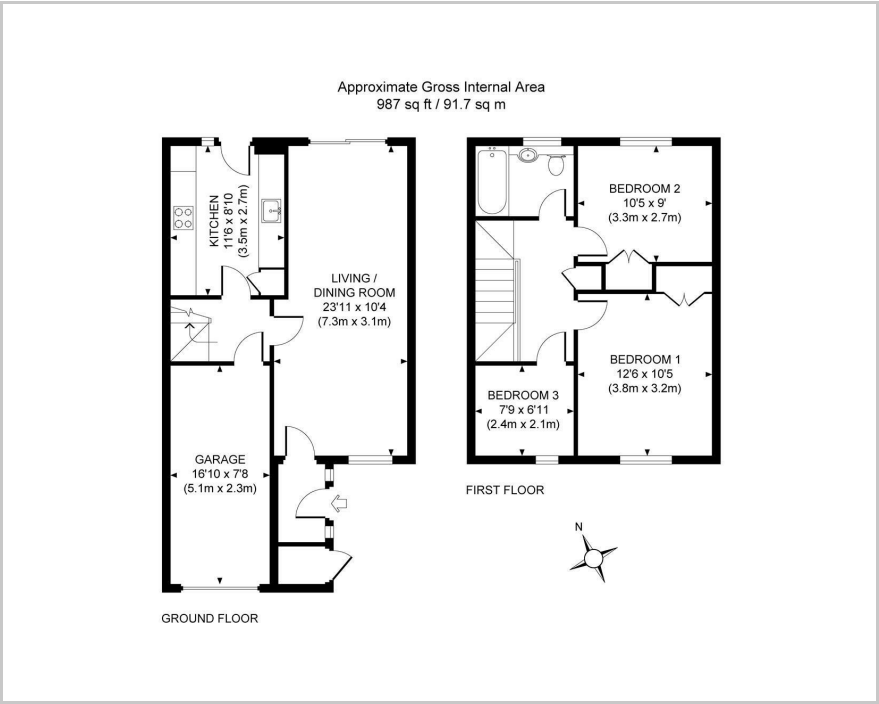


**Climping Close, Haywards Heath, RH16 4DY**

**£1,750 PCM**



Floor Plan



Area Map



These particulars, whilst believed to be accurate are set out as a general outline only for guidance and do not constitute any part of an offer or contract. Intending purchasers should not rely on them as statements of representation of fact, but must satisfy themselves by inspection or otherwise as to their accuracy. No person in this firm's employment has the authority to make or give any representation or warranty in respect of the property.

Accommodation

A well presented 3 bedroom terrace house located in a quiet cul-de-sac situated close to the town centre and approximately 1 mile from the mainline station. This lovely property offers bright and spacious accommodation.



Viewing

Please contact us on 01444 455221 if you wish to arrange a viewing appointment for this property or require further information.

Energy Efficiency Graph

