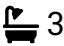



Hale Road, Ashill, IP25

Guide Price £585,000

 5  3  3



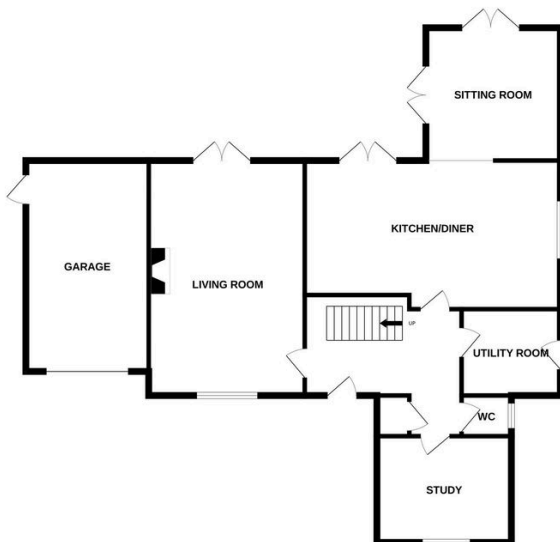
Moneyproperties are thrilled to present this brand new five-bedroom detached house set in the beautiful Norfolk countryside in Ashill with unrivaled field views to the rear. The property is on a purpose-built development of just 5 executive style properties. This fantastic house comprises of a spacious living room with wood burning stove, stylish open plan kitchen/diner, family room, utility room, downstairs wc and study. Five well-proportioned bedrooms, ensuite to bedroom one, a second ensuite to bedroom two, and family bathroom. The property benefits from a garage, off-road parking and a good-sized rear garden. Along with solar panels and air source heating.

Tenure: Freehold EPC: TBC Council Tax: TBC

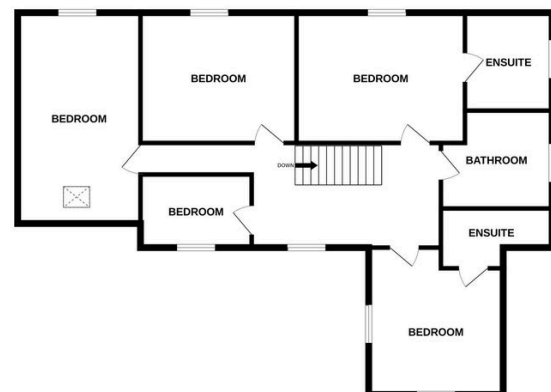
Key Features

- Executive style detached new build house
- Purpose built development of just five dwellings, three houses and two bungalows
- Set in the beautiful Norfolk countryside
- Stylish open plan kitchen/diner leading to separate family room
- Garage with off-road parking
- Five bedrooms with an ensuite to bedroom one and two
- Generous study perfect for working from home
- Underfloor heating downstairs, radiators upstairs with air source heat pump and solar panels
- Spacious living room with wood burning stove
- Good-sized rear garden with field views to the rear

GROUND FLOOR



1ST FLOOR



Whilst every attempt has been made to ensure the accuracy of the floorplan contained here, measurements of doors, windows, rooms and any other items are approximate and no responsibility is taken for any error, omission or mis-statement. This plan is for illustrative purposes only and should be used as such by any prospective purchaser. The services, systems and appliances shown have not been tested and no guarantee as to their operability or efficiency can be given.
Made with Metropix ©2024