



5 Davos Drive

Biddulph, ST8 7FF

Price £250,000



Here at Carters, we are thrilled to welcome to the market this stunningly presented three-bedroom semi-detached modern property.

Finished to an exceptional standard throughout, the home offers stylish, move-in-ready accommodation for you to simply drop your bags and enjoy from day one.

To the front of the property is a stylish kitchen featuring fully integrated appliances and space for a dining table. To the rear, there is a spacious open-plan living/dining room complete with a handy built-in storage cupboard, contemporary feature wall panelling, and French doors leading directly onto the patio area of the recently landscaped rear garden. A cloakroom/guest WC completes the ground floor accommodation.

Upstairs, the property boasts three generous bedrooms, including a luxurious en-suite shower room to the principal bedroom, along with a stunning three-piece family bathroom suite.

Externally, the rear garden has been recently landscaped and features a porcelain-paved patio, railway sleeper borders with a selection of seasonal plants and shrubs, and a lawned area. The west-facing aspect allows the garden to enjoy the evening sun. The property also benefits from a tarmac driveway providing off-road parking for two vehicles, as well as a garage.

This property represents a superb opportunity for first-time buyers and families alike who are searching for a true turnkey home. Early viewing is highly advised.

5 Davos Drive

Biddulph, ST8 7FF

Price £250,000



Entrance Hallway

Hardwood double glazed entrance door to the front elevation, Dado rail. Radiator. Stairs to the first floor. Laminate flooring.

Living / Dining Room

17'3" x 14' (5.26m x 4.27m)
UPVC double glazed window to the rear elevation having a made to measure fitted blind. UPVC double glazed french doors to the rear elevation. Under stairs storage cupboard. Feature wall paneling. TV aerial point. Two radiators. Laminate flooring.

Breakfast Kitchen

13'4" x 10'3" (4.06m x 3.12m)
UPVC double glazed window to the front elevation with a made to measure fitted blind. Fitted kitchen incorporating a range of wall, base and drawer units. Laminate work surfaces. Stainless steel one and a half bowl sink with a mixer tap and a drainer. Integrated fridge freezer. Built in electric oven. Built in four ring gas hob. Built in extractor hood. Integrated dishwasher. Integrated washing machine. Recessed ceiling down lighters. Radiator. Tiled flooring.

W.C.

Mid level w.c. Pedestal wash hand basin. Partially tiled walls. Extractor fan. Radiator. Laminate flooring.

Stairs and Landing

Access to the loft. Built in storage cupboard. Dado rail.

Bedroom One

10'4" x 14'10" (3.15m x 4.52m)
UPVC double glazed window to the rear elevation with made to measure blinds. Radiator. TV aerial point. Double built in wardrobes.

En Suite

4'10" x 6'2" (1.47m x 1.88m)
Three piece suite comprising of; a shower enclosure, pedestal wash hand basin and a mid level w.c. Extractor fan. Recessed ceiling down lighters. Shaver socket. Partially tiled walls. Chrome heated towel rail. Tiled flooring.

Bedroom Two

10'3" x 10'4" (3.12m x 3.15m)
UPVC double glazed window to the front elevation with a made to measure fitted blind. Feature wall paneling. Radiator.

Bedroom Three

6'9" x 9'4" (2.06m x 2.84m)
UPVC double glazing to the rear elevation. Feature wall paneling. Radiator. TV aerial point.

Family Bathroom

6'10" x 6'8" (2.08m x 2.03m)
UPVC double glazed window to the front elevation. Luxurious fitted bathroom suite comprising of; a panel bath with

a hand held shower, pedestal wash hand basin and a mid level w.c.

Partially tiled walls. Recessed ceiling down lighters. Extractor fan. Radiator. Tiled flooring.

Garage

Up and over garage door to the front elevation.

Externally

Externally, the property benefits from a tarmac driveway providing off-road parking for two vehicles, together with a single garage. To the rear is a recently landscaped garden featuring a porcelain-tiled patio area and a lawn, complemented by a raised railway sleeper border planted with a variety of seasonal plants and shrubs. A rear gate provides convenient access to the garage, while an outside tap is located at the front of the property for added practicality.

Additional Information

Freehold.

Council Tax Band C.

Total Floor Area: 89 Square Meters / 957 Square Foot.

Service Charge Payable 6 Monthly at £119.

Disclaimer

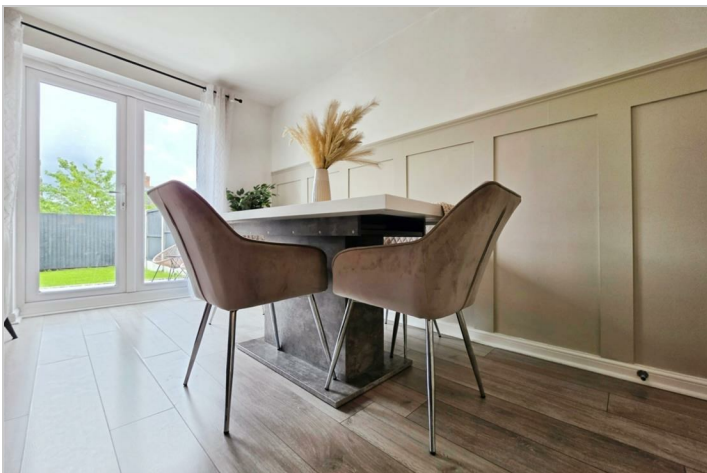
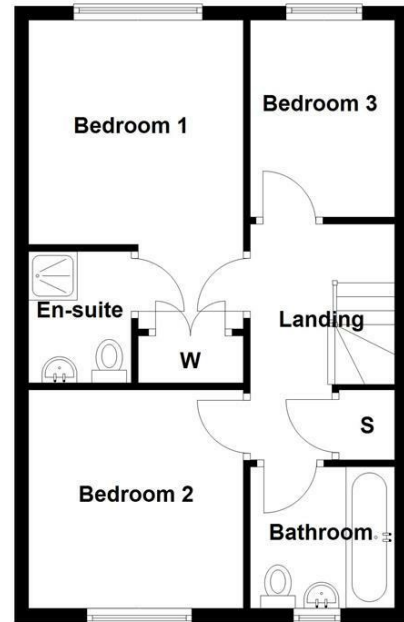
Although we try to ensure accuracy, these details are set

out for guidance purposes only and do not form part of a contract or offer. Please note that some photographs have been taken with a wide-angle lens. A final inspection prior to exchange of contracts is recommended. No person in the employment of Carters Estate Agents Ltd has any authority to make any representation or warranty in relation to this property. We obtain some of the property information from land registry as part of our instruction and as we are not legal advisers we can only pass on the information and not comment or advise on any legal aspect of the property. You should take advise from a suitably authorised licensed conveyancer or solicitor in this respect.

Ground Floor



First Floor



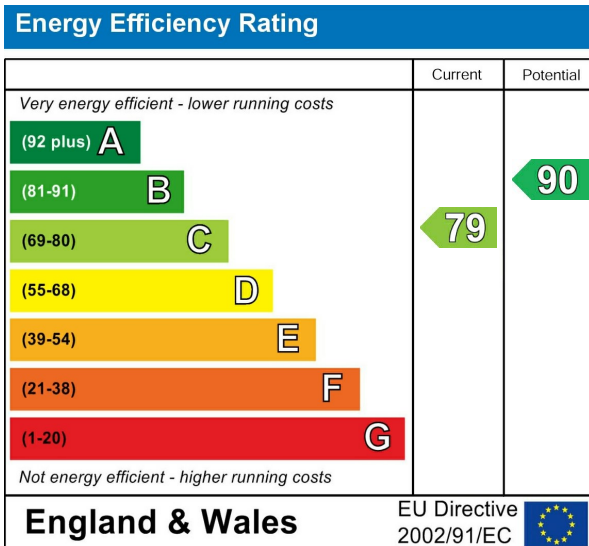
Road Map



Hybrid Map



Energy Efficiency Graph



Viewing

Please contact our Carters Estate Agents Office on 01782 470391 if you wish to arrange a viewing appointment for this property or require further information.

These particulars, whilst believed to be accurate are set out as a general outline only for guidance and do not constitute any part of an offer or contract. Intending purchasers should not rely on them as statements of representation of fact, but must satisfy themselves by inspection or otherwise as to their accuracy. No person in this firm's employment has the authority to make or give any representation or warranty in respect of the property.

101 High Street Biddulph Stoke on Trent Staffs ST8 6AB
01782 470391
www.carters-estateagents.co.uk