



The Green, TW9

£2,200 Per calendar month

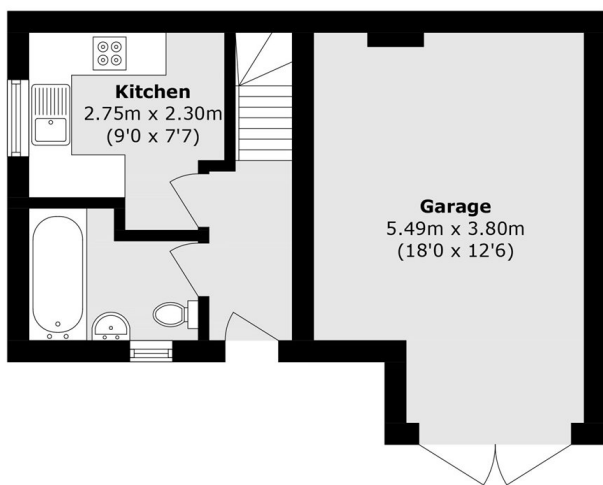
A unique and charming cottage with a modern kitchen and bathroom on the ground floor, and a lovely and bright dual aspect reception room, double bedroom and dressing area on the first floor.

Arguably the best location in town, overlooking Richmond Green, moments from Richmond's array of shops, restaurants and bars and close to the mainline train station.

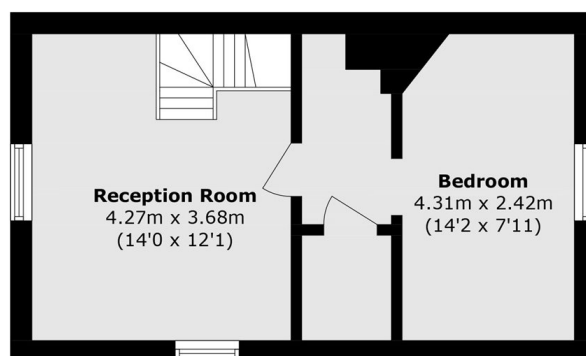
Features

Richmond Green
Parking/ Garage
Ample Storage
Period Features
Furnished
Close To Transport

The Green, Richmond, TW9



Ground Floor



First Floor

Total area (approx): 48.8 sq. m (525.2 sq. ft)
(Excluding Garage)
Garage area (approx): 19.3 sq. m (207.7 sq. ft)