



Greenmeadow Drive, offers over £175,000

- GROUND FLOOR
- GARDEN
- WELL PRESENTED
- VILLAGE LOCATION
- EPC Rating: D



02920 612328
whitchurch@peteralan.co.uk



About the property

Situated in Tongwynlais is this well-presented two bedroom ground floor maisonette with a private garden. Internally, the property has been modernised with an integrated kitchen and fitted wardrobes in the master bedroom. The living space is bright and finished to a high standard.

This property has convenient access being on the ground floor and benefits from excellent transport links, local amenities and woodland walks.



 peter
alan

Accommodation

Agents Notes

Staff Sale: "Under the terms of the Estate Agency Act 1979 (section 21) please note that the vendor of this property is an Associate of an Employee of the Connells Group of companies".

Lounge

13' 11" x 12' 8" (4.24m x 3.86m)

A bright lounge situated at the front of the property, benefiting from natural light.

Kitchen

8' 8" x 11' 6" (2.64m x 3.51m)

Modern worktops and cabinets with seating area and view of the garden.

Bedroom 1

12' 2" x 10' 7" (3.71m x 3.23m)

A double bedroom with fitted wardrobes.

Bedroom 2

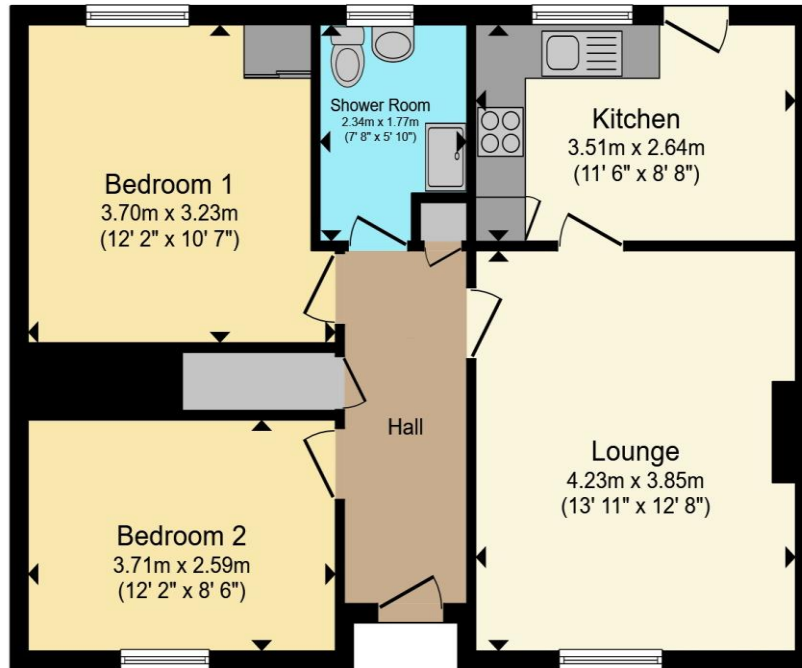
12' 2" x 8' 6" (3.71m x 2.59m)

A front facing, double bedroom. Currently being used as a dining room.

02920 612328

whitchurch@peteralan.co.uk

Floorplan



Total floor area 63.8 m² (687 sq.ft.) approx

This floor plan is for illustrative purposes only. It is not drawn to scale. Any measurements, floor areas (including any total floor area), openings and orientation are approximate. No details are guaranteed, they cannot be relied upon for any purpose and they do not form part of any agreement. No liability is taken for any error, omission or misstatement. A party must rely upon its own inspection(s). Powered by www.propertybox.io



Important Information

Note while we endeavour to make our sales details accurate and reliable, if there is any point which is of particular interest to you, please contact the office and we will be pleased to confirm the position for you. We have not personally tested any apparatus, equipment, fixtures, fittings or services and cannot verify they are in working order or fit for their purposes. Nothing in these particulars is intended to indicate that carpets or curtains, furnishings or fittings, electrical goods (whether wired or not). Gas fires or light fittings or any other fixtures not expressly included form part of the property offered for sale. This computer generated Floorplan, if applicable, is intended as a general guide to the layout and design of the property. It is not to scale and should not be relied upon for dimensions. Tenure: We cannot confirm the tenure of the property as we have not had access to the legal documents. The buyer is advised to obtain verification from their solicitor or surveyor.

Peter Alan Limited is registered in England and Wales under company number 2073153, Registered Office is Cumbria House, 16-20 Hockliffe Street, Leighton Buzzard, Bedfordshire, LU7 1GN. VAT Registration Number is 500 2481 05. For activities relating to regulated mortgages and non-investment insurance contracts, Peter Alan Limited is an appointed representative of Connells Limited which is authorised and regulated by the Financial Conduct Authority. Connells Limited's Financial Services Register number is 302221. Most buy-to-let

