



Shooters Hill Road, SE3

£425,000

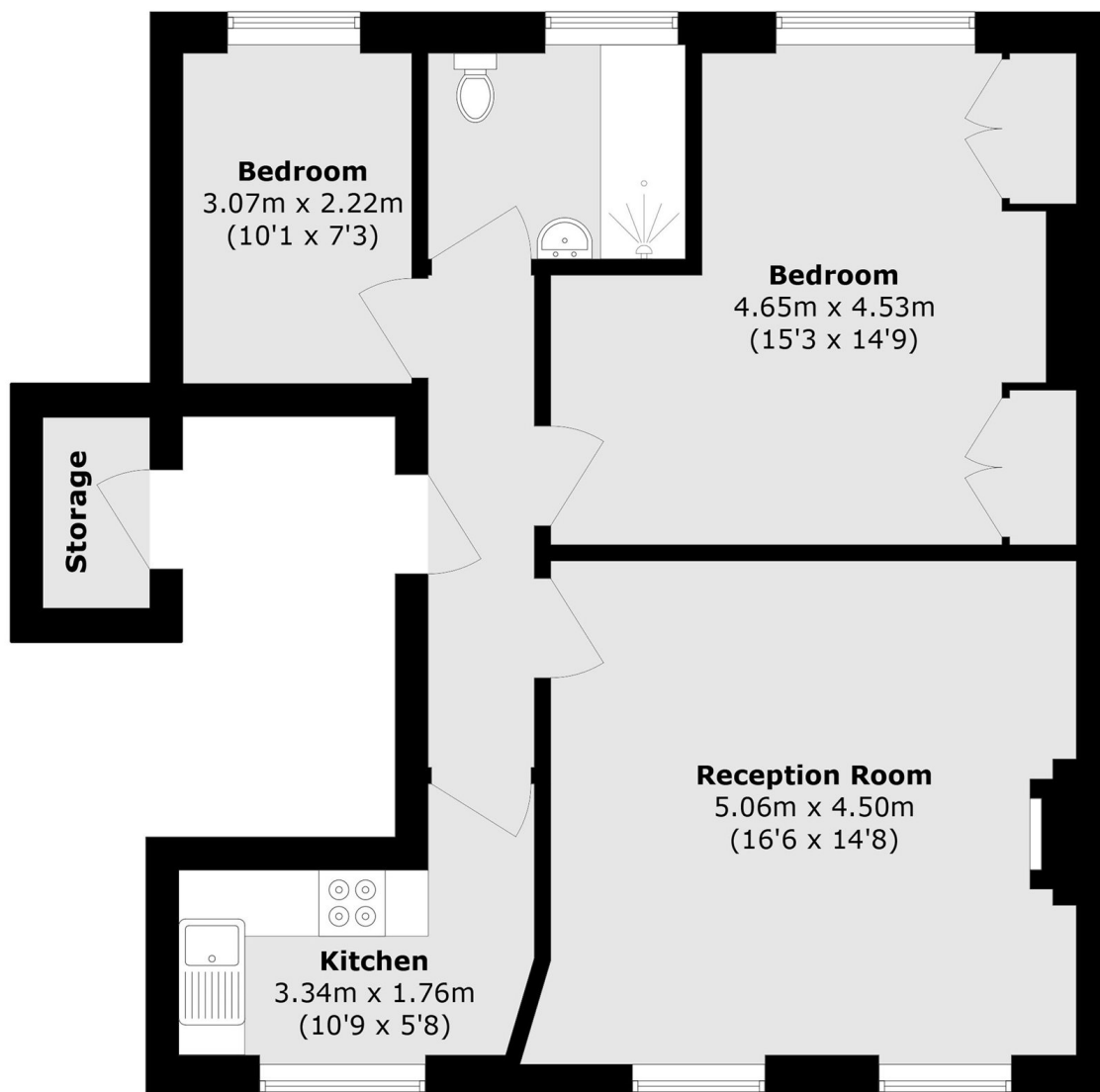
Bright and spacious first floor conversion flat which has period features, first floor and the benefit of being offered with no chain. The reception room has high ceilings and a feature fireplace. Both kitchen and bathroom are in good condition. There is a double bedroom with views over the rear garden, and a second single bedroom. This property would make an excellent first time buy.

Situated in an excellent position, minutes from the Heath and close to Blackheath Royal Standard for its shops, cafés and amenities. There is a regular bus route to North Greenwich Jubilee line, and the property is in close proximity to both Blackheath and Westcombe Park Station.

Features

- First Floor
- Chain Free
- Minutes From The Heath
- Close To Shops & Transport
- Two Bedrooms
- Parking Space

Shooters Hill Road, LONDON, SE3



Total area (approx.): 65.0 sq. m (699.7 sq. ft)
Storage area (approx.): 3.3 sq. m (35. 5 sq. ft)