



Mary Road, Handsworth, Birmingham

burchell
edwards



Property Description

Situated in a popular residential location, this traditional three bedroom mid terrace property offers deceptively spacious accommodation throughout and is ideal for first time buyers, families or investors. The property benefits from two reception rooms, a modern fitted kitchen, ground floor bathroom and three first floor bedrooms.

The property offers a practical layout with generous living space downstairs and well proportioned bedrooms upstairs. Externally, there is a low maintenance fore garden and an enclosed rear garden, providing useful outdoor space.

Mary Road is conveniently positioned for access to local schools, shops, public transport links and Birmingham City Centre, making this a fantastic opportunity for buyers looking for a well located home with plenty of potential.

Entrance Hall

Stairs rising to the first floor accommodation and doors leading to:

Lounge

Double glazed bay window to the front elevation, feature fireplace and central heating radiator.

Living Room

Spacious second reception room with feature fireplace, understairs storage cupboard and access through to the kitchen.

Kitchen

Fitted with a range of matching wall and base units incorporating work surfaces over, inset sink with drainer, integrated oven and hob, space for further appliances, window to the side elevation and door leading to the rear garden.

Bathroom

Comprising a panelled bath with shower over, vanity wash hand basin, low level WC and obscure double glazed window.

Bedroom One

Double glazed window to the front elevation and central heating radiator.

Bedroom Two

Double glazed window to the rear elevation and central heating radiator.

Bedroom Three

Single bedroom with double glazed window to the rear elevation and central heating radiator.

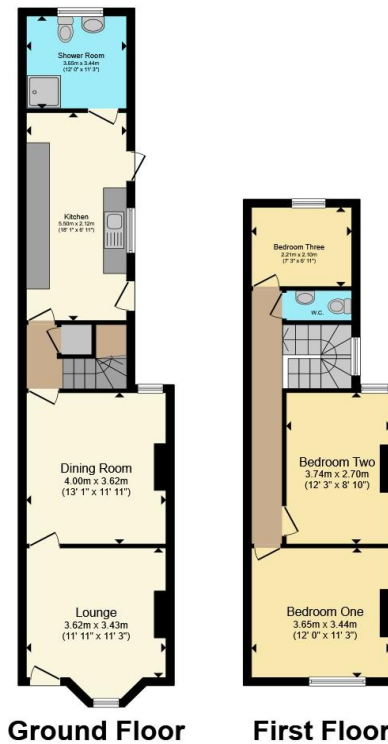
Rear Garden

Enclosed rear garden providing a private outdoor space with fenced boundaries.









Total floor area 93.8 m² (1,010 sq.ft.) approx

This floor plan is for illustrative purposes only. It is not drawn to scale. Any measurements, floor areas (including any total floor area), openings and orientation are approximate. No details are guaranteed, they cannot be relied upon for any purpose and they do not form part of any agreement. No liability is taken for any error, omission or misstatement. A party must rely upon its own inspection(s). Powered by www.propertybox.io



To view this property please contact Burchell Edwards on

T 0121 373 6320
E erdington@burchelledwards.co.uk

Unit 3 Queens Court, Gravelly Hill Erdington
 BIRMINGHAM B23 6BJ

EPC Rating: C Council Tax
 Band: A

Tenure: Freehold

view this property online burchelledwards.co.uk/Property/ERD208124



1. MONEY LAUNDERING REGULATIONS Intending purchasers will be asked to produce identification documentation at a later stage and we would ask for your co-operation in order that there will be no delay in agreeing the sale. 2. These particulars do not constitute part or all of an offer or contract. 3. The measurements indicated are supplied for guidance only and as such must be considered incorrect. Potential buyers are advised to recheck measurements before committing to any expense. 4. We have not tested any apparatus, equipment, fixtures, fittings or services and it is in the buyers interest to check the working condition of any appliances.

Burchell Edwards is a trading name of Connells Residential which is registered in England and Wales under company number 1489613, Registered Office is Cumbria House, 16-20 Hockliffe Street, Leighton Buzzard, Bedfordshire, LU7 1GN. VAT Registration Number is 500 2481 05.

See all our properties at www.burchelledwards.co.uk | www.rightmove.co.uk | www.zoopla.co.uk

Property Ref: ERD208124 - 0004