



Lordship Lane, SE22 | Offers In Excess Of £525,000

02087028222

eastdulwich@pedderproperty.com

pedder
We live local



In General

- Two double bedrooms
- Period conversion
- Split-level
- Over 740 Sq Ft of internal space
- Good condition throughout
- Residential section of Lordship Lane

In Detail

CHAIN FREE - Stunning, spacious and beautifully-bright split-level period conversion on this residential section of Lordship Lane - in the heart of East Dulwich, SE22.

Boasting over 740 Sq Ft of internal space - the gorgeous apartment has been lovingly maintained by the current owner who is relocating out of the area. There is a sumptuous 17x16 ft reception room at the top of the property with huge eaves storage and a separate 11x8 ft fitted kitchen. On the first floor - there are two comfortable double bedrooms - including the 12x9 ft principal room - and a modern family bathroom.

Lordship Lane is enviably-located for the independent shops, bars, restaurants and coffee shops nearby as well as the gorgeous parks and green spaces. There are strong transport links into The City from East Dulwich station (0.6 miles) and Peckham Rye station (1.7 miles) as well as bus/cycle routes through the neighbouring Dulwich Village, Herne Hill and Camberwell.

Internal viewing recommended.

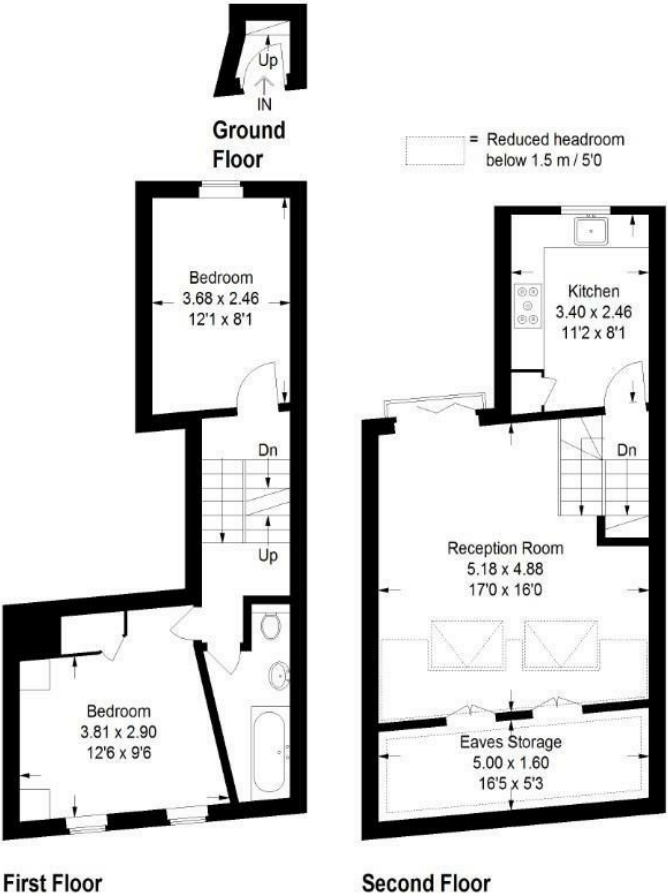
EPC: C | Council tax band: C | Lease: 118 years remaining | GR: £300 pa | SC: £266 pa | BI: £860 pa



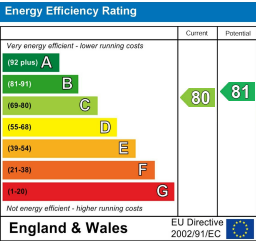
Floorplan

Lordship Lane, SE22

Approximate Gross Internal Area
(Excluding Eaves Storage)
69.1 sq m / 744 sq ft



Copyright www.pedderproperty.com © 2025
These plans are for representation purposes only as defined by RICS - Code of Measuring Practice. Not drawn to Scale. Windows and door openings are approximate. Please check all dimensions, shapes and compass bearings before making any decisions reliant upon them.



Pedder Property Ltd trading as Pedder for themselves and for the vendor/landlord of this property whose agents they are, give notice that (1) these particulars do not constitute any part of an offer or contract, (2) all statements contained within these particulars are made without responsibility on the part of Pedder or the vendor/landlord, (3) whilst made in good faith, none of the statements contained within these particulars are to be relied upon as a statement of representation or fact, (4) any intending purchaser/tenant must satisfy him/herself by inspection or otherwise as to the correctness of each of the statements contained within these particulars, (5) the vendor/landlord does not make or give either Pedder or any person in their employment any authority to make or give representation or warranty whatsoever in relation to this property.