



## Streatham Hill, SW2

£450,000

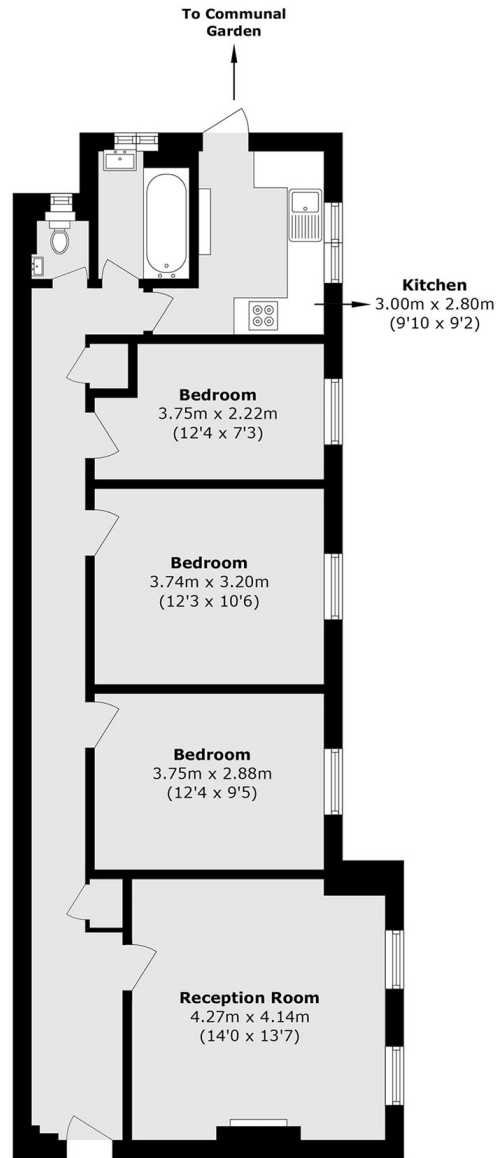
At over 850sqft this three bedroom property has a large reception with feature fireplace and views over the communal garden. All three bedrooms are good sized with the third being currently used as a study. The separate modern kitchen has a door through to the stairs down to the communal garden and the bathroom has a separate w/c.

Telford Court is located on Streatham Hill, with Streatham Hill Station moments away, providing links to Clapham Junction and London Victoria. Transport links to Brixton are also on the doorstep. Local shops and restaurants are also within easy reach.

### Features

- Three Bedrooms
- Separate Reception
- Rear Facing
- Communal Garden
- Chain Free
- Great Location

# Streatham Hill, London, SW2



Total area (approx.): 80.4 sq. m (865.4 sq. ft)